

Spred1 Antibody

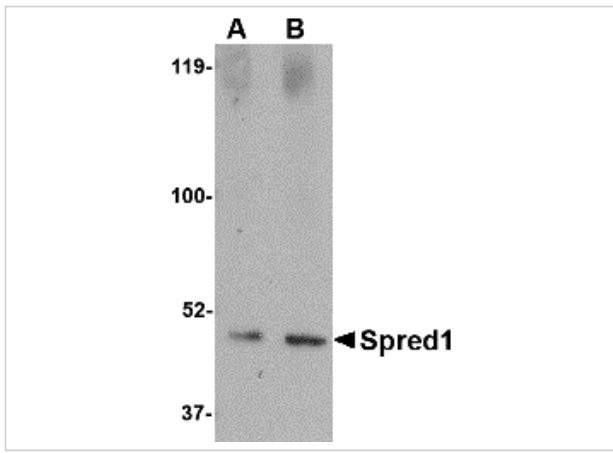
CATALOG NUMBER: 4843

Specifications

Host Species	Rabbit
Species Reactivity	Human, Mouse, Rat
Immunogen	Spred1 antibody was raised against a 14 amino acid synthetic peptide near the center of the human Spred1. The immunogen is located within amino acids 250 - 300 of Spred1.
Conjugate	Unconjugated
Tested Applications	ELISA, IF, IHC-P, WB
User Note	Optimal dilutions for each application to be determined by the researcher.
Specificity	This Spred1 antibody is predicted to have no cross-reactivity to Spred2 or Spred3.
Predicted Molecular Weight	Predicted: 49 kDa Observed: 498 kDa

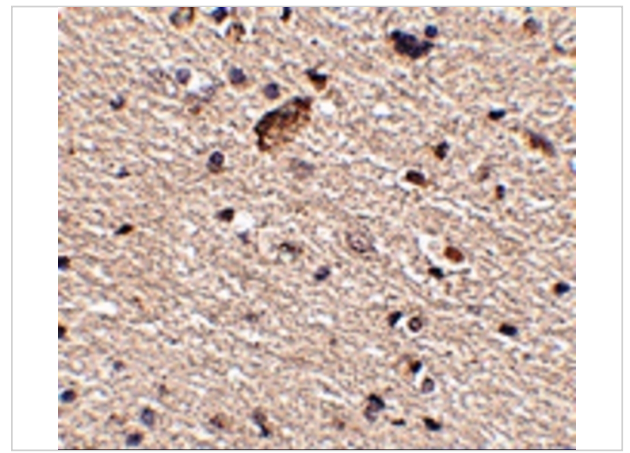
Properties

Purification	Spred1 Antibody is affinity chromatography purified via peptide column.
Clonality	Polyclonal
Isotype	IgG
Physical State	Liquid
Buffer	Spred1 Antibody is supplied in PBS containing 0.02% sodium azide.
Concentration	1 mg/mL
Storage Conditions	Spred1 antibody can be stored at 4°C for three months and -20°C, stable for up to one year. As with all antibodies care should be taken to avoid repeated freeze thaw cycles. Antibodies should not be exposed to prolonged high temperatures.



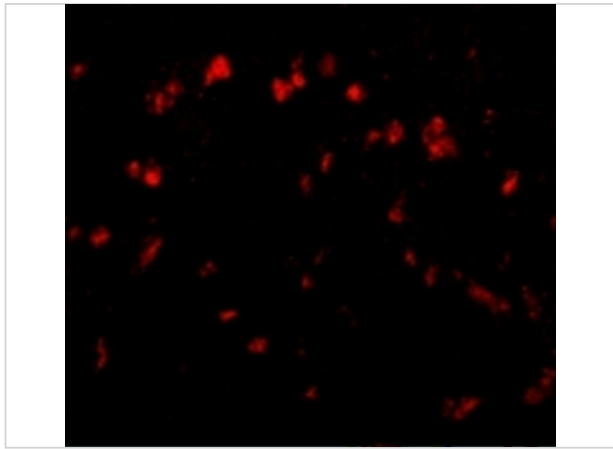
Spred1 Antibody 1

Western blot analysis of Spred1 in human brain tissue lysate with Spred1 antibody at (A) 1 and (B) 2 $\mu\text{g/mL}$.



Spred1 Antibody 2

Immunohistochemistry of Spred1 in human brain tissue with Spred1 antibody at 2.5 $\mu\text{g/mL}$.



Spred1 Antibody 3

Immunofluorescence of Spred1 in Human Brain tissue with Spred1 antibody at 20 $\mu\text{g/mL}$.

Disclaimer

Disclaimer

Optimal dilutions/concentrations should be determined by the end user. The information provided is a guideline for product use. This product is for research use only.

For research use only. For additional information, visit ProSci's [Terms and Conditions Page](#).