

CUEDC1 Antibody

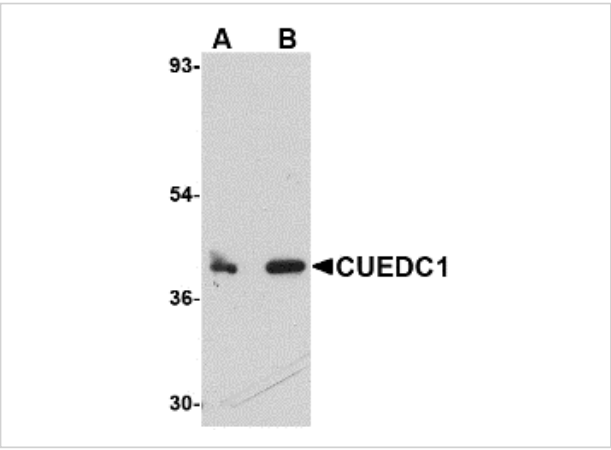
CATALOG NUMBER: 4829

Specifications

Host Species	Rabbit
Species Reactivity	Human, Mouse, Rat
Immunogen	CUEDC1 antibody was raised against a 16 amino acid synthetic peptide near the carboxy terminus of human CUEDC1. The immunogen is located within amino acids 310 - 360 of CUEDC1.
Conjugate	Unconjugated
Tested Applications	ELISA, IF, IHC-P, WB
User Note	Optimal dilutions for each application to be determined by the researcher.
Specificity	CUEDC1 antibody will not cross-react with CUEDC2.

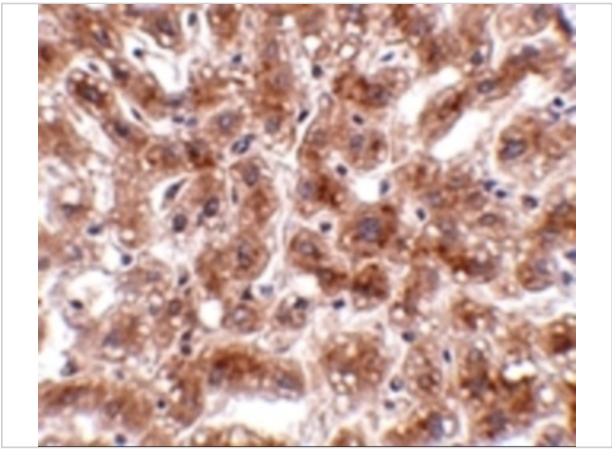
Properties

Purification	CUEDC1 Antibody is affinity chromatography purified via peptide column.
Clonality	Polyclonal
Isotype	IgG
Physical State	Liquid
Buffer	CUEDC1 Antibody is supplied in PBS containing 0.02% sodium azide.
Concentration	1 mg/mL
Storage Conditions	CUEDC1 antibody can be stored at 4°C for three months and -20°C, stable for up to one year. As with all antibodies care should be taken to avoid repeated freeze thaw cycles. Antibodies should not be exposed to prolonged high temperatures.



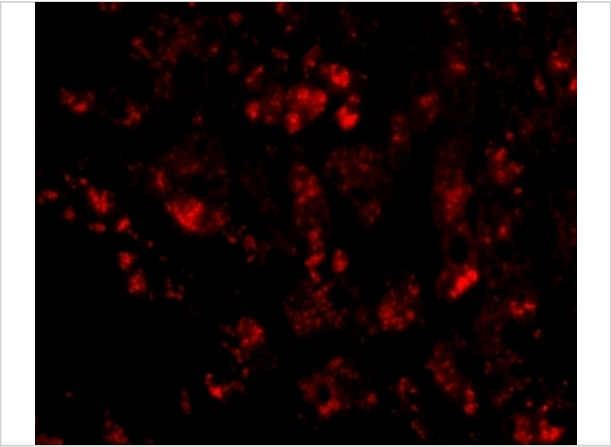
CUEDC1 Antibody 1

Western blot analysis of CUEDC1 in rat liver tissue lysate with CUEDC1 antibody at (A) 0.5 and (B) 1 $\mu\text{g/mL}$.



CUEDC1 Antibody 2

Immunohistochemistry of CUEDC1 in human liver tissue with CUEDC1 antibody at 2 $\mu\text{g/mL}$.



CUEDC1 Antibody 3

Immunofluorescence of CUEDC1 in human liver tissue with CUEDC1 antibody at 20 $\mu\text{g/mL}$.

Disclaimer

Disclaimer	Optimal dilutions/concentrations should be determined by the end user. The information provided is a guideline for product use. This product is for research use only.
------------	--

For research use only. For additional information, visit ProSci's [Terms and Conditions Page](#).