

## Aldh3A1 Antibody

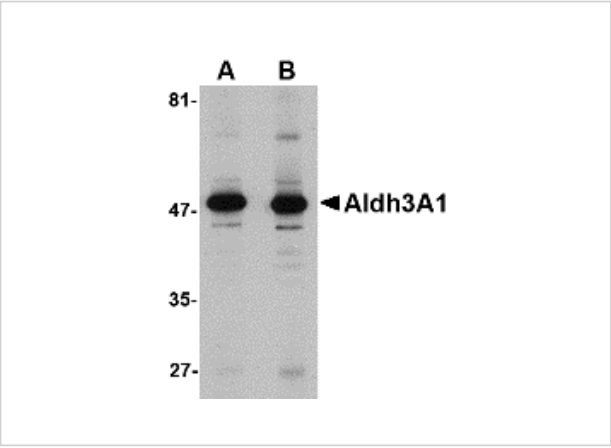
CATALOG NUMBER: 4787

### Specifications

Host Species	Rabbit
Species Reactivity	Human, Mouse, Rat
Immunogen	Aldh3A1 antibody was raised against a 13 amino acid synthetic peptide near the carboxy terminus of the human Aldh3A1. The immunogen is located within the last 50 amino acids of Aldh3A1.
Conjugate	Unconjugated
Tested Applications	ELISA, WB
User Note	Optimal dilutions for each application to be determined by the researcher.
Specificity	At least two isoforms of Aldh3A1 are known to exist. This antibody is predicted to have no cross-reactivity to Aldh3A2.

### Properties

Purification	Aldh3A1 Antibody is affinity chromatography purified via peptide column.
Clonality	Polyclonal
Isotype	IgG
Physical State	Liquid
Buffer	Aldh3A1 Antibody is supplied in PBS containing 0.02% sodium azide.
Concentration	1 mg/mL
Storage Conditions	Aldh3A1 antibody can be stored at 4°C for three months and -20°C, stable for up to one year. As with all antibodies care should be taken to avoid repeated freeze thaw cycles. Antibodies should not be exposed to prolonged high temperatures.



Aldh3A1 Antibody 1

Western blot analysis of Aldh3A1 in human stomach lysate with Aldh3A1 antibody at (A) 1 and (B) 2 µg/mL.

Disclaimer

Disclaimer	Optimal dilutions/concentrations should be determined by the end user. The information provided is a guideline for product use. This product is for research use only.
------------	--

For research use only. For additional information, visit ProSci's [Terms and Conditions Page](#).