

TLR11 Antibody

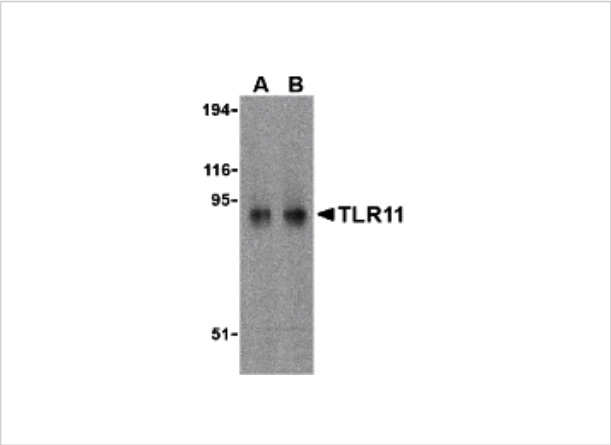
CATALOG NUMBER: 3277

Specifications

Host Species	Rabbit
Species Reactivity	Mouse
Immunogen	TLR11 antibody was raised against a peptide corresponding to 15 amino acids near the carboxy terminus of mouse TLR11. The immunogen is located within the last 50 amino acids of TLR11.
Conjugate	Unconjugated
Tested Applications	ELISA, ICC, IF, WB
User Note	Optimal dilutions for each application to be determined by the researcher.

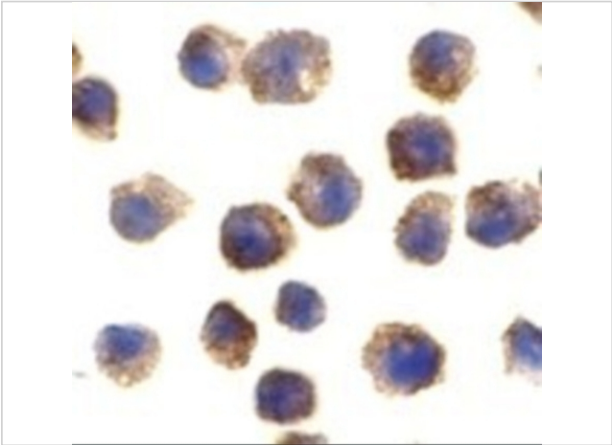
Properties

Purification	TLR11 Antibody is Ion exchange chromatography purified.
Clonality	Polyclonal
Isotype	IgG
Physical State	Liquid
Buffer	TLR11 Antibody is supplied in PBS containing 0.02% sodium azide.
Concentration	1 mg/mL
Storage Conditions	TLR11 antibody can be stored at 4°C for three months and -20°C, stable for up to one year. As with all antibodies care should be taken to avoid repeated freeze thaw cycles. Antibodies should not be exposed to prolonged high temperatures.



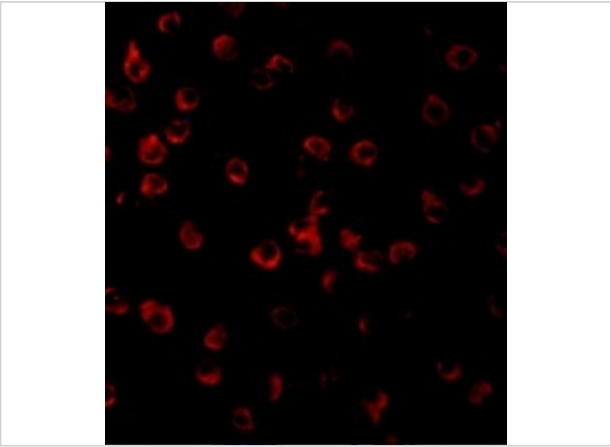
TLR11 Antibody 1

Western blot analysis of TLR11 in RAW264.7 cell lysates with TLR11 antibody at (A) 0.5 and (B) 1 μ g/mL.



TLR11 Antibody 2

Immunocytochemical staining of RAW264.7 cells using TLR11 antibody at 2 μ g/mL.



TLR11 Antibody 3

Immunofluorescence of TLR11 in Raw264.7 cells with TLR11 antibody at 10 μ g/mL.

Disclaimer

Disclaimer	Optimal dilutions/concentrations should be determined by the end user. The information provided is a guideline for product use. This product is for research use only.
-------------------	--

For research use only. For additional information, visit ProSci's [Terms and Conditions Page](#).