

Syntaphilin Antibody

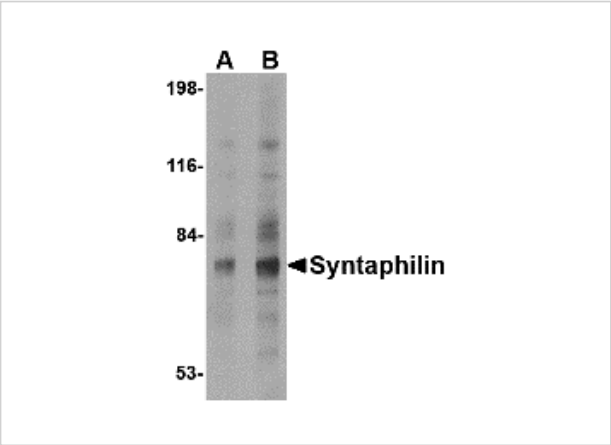
CATALOG NUMBER: 4617

Specifications

Host Species	Rabbit
Species Reactivity	Human, Mouse, Rat
Immunogen	Syntaphilin antibody was raised against a 18 amino acid synthetic peptide from near the amino terminus of human Syntaphilin. The immunogen is located within amino acids 80 - 130 of Syntaphilin.
Conjugate	Unconjugated
Tested Applications	ELISA, IF, IHC-P, WB
User Note	Optimal dilutions for each application to be determined by the researcher.

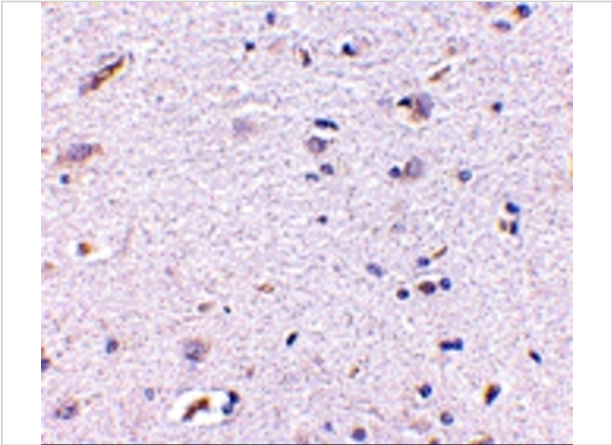
Properties

Purification	Syntaphilin Antibody is affinity chromatography purified via peptide column.
Clonality	Polyclonal
Isotype	IgG
Physical State	Liquid
Buffer	Syntaphilin Antibody is supplied in PBS containing 0.02% sodium azide.
Concentration	1 mg/mL
Storage Conditions	Syntaphilin antibody can be stored at 4°C for three months and -20°C, stable for up to one year. As with all antibodies care should be taken to avoid repeated freeze thaw cycles. Antibodies should not be exposed to prolonged high temperatures.



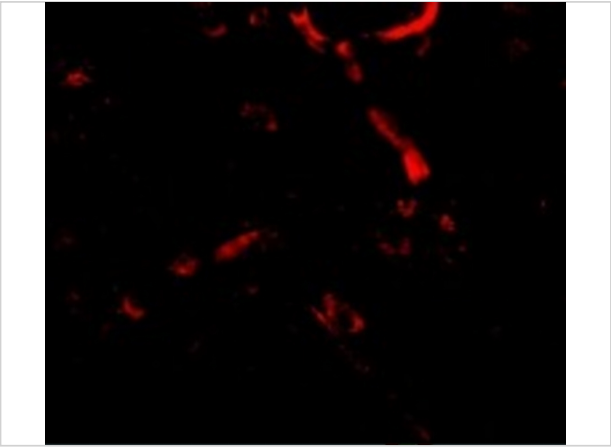
Syntaphilin Antibody 1

Western blot analysis of Syntaphilin in human brain tissue lysate with Syntaphilin antibody at (A) 2 and (B) 4 $\mu\text{g/mL}$.



Syntaphilin Antibody 2

Immunohistochemistry of Syntaphilin in human brain with Syntaphilin antibody at 5 $\mu\text{g/mL}$.



Syntaphilin Antibody 3

Immunofluorescence of Syntaphilin in Human Brain cells with Syntaphilin antibody at 20 $\mu\text{g/mL}$.

Disclaimer

Disclaimer	Optimal dilutions/concentrations should be determined by the end user. The information provided is a guideline for product use. This product is for research use only.
------------	--

For research use only. For additional information, visit ProSci's [Terms and Conditions Page](#).