

TEM4 Antibody

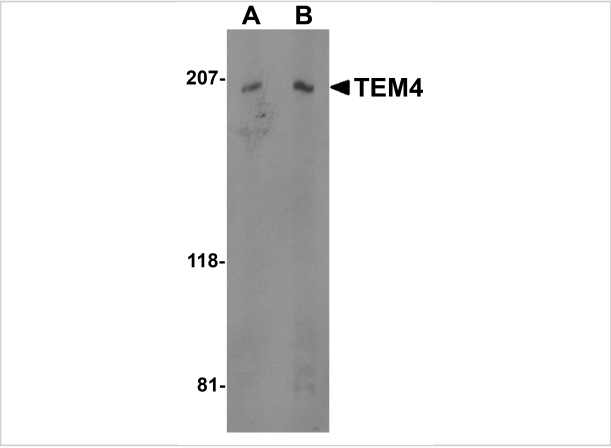
CATALOG NUMBER: 4367

Specifications

Host Species	Rabbit
Species Reactivity	Human
Homology	Predicted species reactivity based on immunogen sequence: Mouse: (94%)
Immunogen	TEM4 antibody was raised against a 18 amino acid synthetic peptide near the center of human TEM4. The immunogen is located within amino acids 910 - 960 of TEM4.
Conjugate	Unconjugated
Tested Applications	ELISA, IHC-P, WB
User Note	Optimal dilutions for each application to be determined by the researcher.
Predicted Molecular Weight	Predicted: 220 kDa Observed: 200 kDa

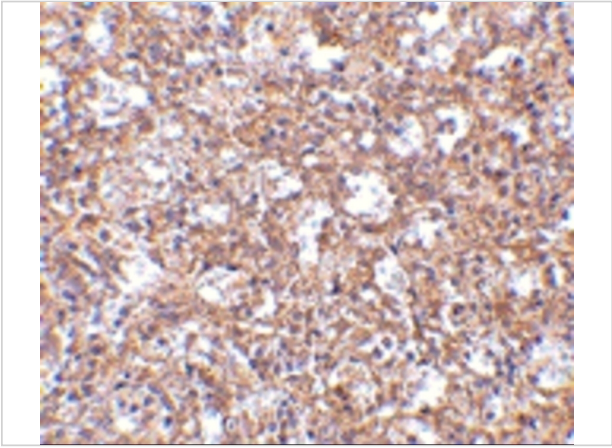
Properties

Purification	TEM4 Antibody is affinity chromatography purified via peptide column.
Clonality	Polyclonal
Isotype	IgG
Physical State	Liquid
Buffer	TEM4 Antibody is supplied in PBS containing 0.02% sodium azide.
Concentration	1 mg/mL
Storage Conditions	TEM4 antibody can be stored at 4°C for three months and -20°C, stable for up to one year. As with all antibodies care should be taken to avoid repeated freeze thaw cycles. Antibodies should not be exposed to prolonged high temperatures.



TEM4 Antibody 1

Western blot analysis of TEM4 in Jurkat cell lysate with TEM4 antibody at (A) 0.5 and (B) 1 µg/mL.



TEM4 Antibody 2

Immunohistochemistry of TEM4 in human spleen tissue with TEM4 antibody at 2.5 µg/mL.

Disclaimer

Disclaimer	Optimal dilutions/concentrations should be determined by the end user. The information provided is a guideline for product use. This product is for research use only.
------------	------------------------------------------------------------------------------------------------------------------------------------------------------------------------

For research use only. For additional information, visit ProSci's [Terms and Conditions Page](#).