

## TSLP Antibody

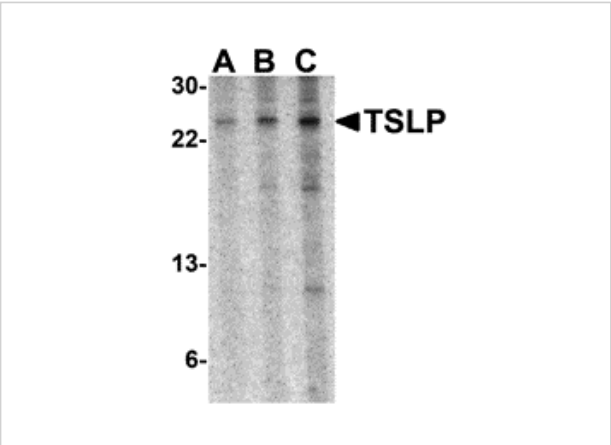
CATALOG NUMBER: 4025

### Specifications

Host Species	Rabbit
Species Reactivity	Mouse, Rat
Immunogen	Anti-TSLP antibody ( <b>4025</b> ) was raised against a peptide corresponding to 20 amino acids near the center of mouse TSLP. The immunogen is located within the amino acids 70-120 of TSLP.
Conjugate	Unconjugated
Tested Applications	ELISA, IF, IHC-P, WB
User Note	Optimal dilutions for each application to be determined by the researcher.
Predicted Molecular Weight	Predicted: 16 kD Observed: 24 kD (Post-modifications: 3 N-linked glycosylations)

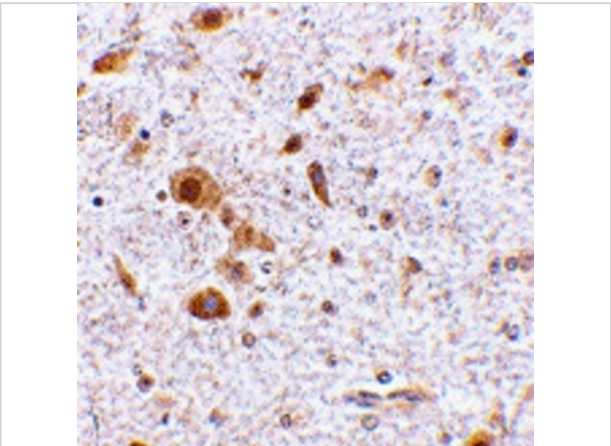
### Properties

Purification	TSLP Antibody is affinity chromatography purified via peptide column.
Clonality	Polyclonal
Isotype	IgG
Physical State	Liquid
Buffer	TSLP Antibody is supplied in PBS containing 0.02% sodium azide.
Concentration	1 mg/mL
Storage Conditions	TSLP antibody can be stored at 4°C for three months and -20°C, stable for up to one year. As with all antibodies care should be taken to avoid repeated freeze thaw cycles. Antibodies should not be exposed to prolonged high temperatures.



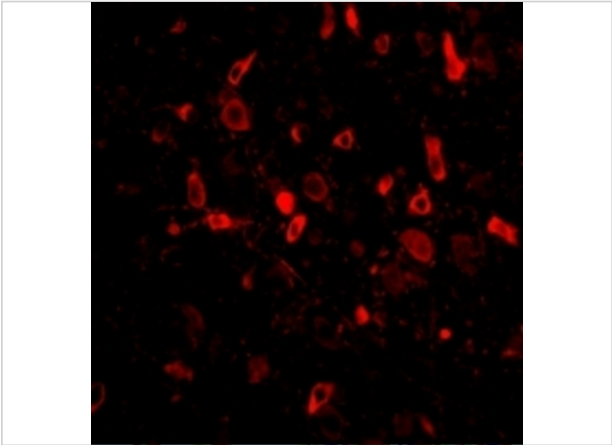
### TSLP Antibody 1

**Figure 1 Western Blot Validation in Mouse A-20 Cell Lines**  
 Loading: 15 µg of lysates per lane. Antibodies: TSLP 4025 (A: 0.5 µg/mL, B: 1 µg/mL, C: 2 µg/mL), 1h incubation at RT in...



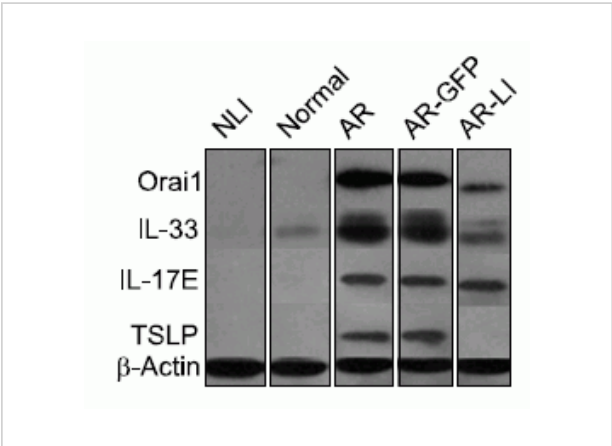
### TSLP Antibody 3

**Figure 3 Immunohistochemistry Validation of TSLP in Mouse Brain Tissue**  
 Immunohistochemical analysis of paraffin-embedded Mouse Brain Tissue using anti-TSLP antibody (4025) at ...



### TSLP Antibody 2

**Figure 2 Immunofluorescence Validation of TSLP in Mouse Brain Tissue**  
 Immunofluorescent analysis of 4% paraformaldehyde-fixed Mouse Brain Tissue labeling TSLP with 4025 at 20 µg/...



### TSLP Antibody 4

**Figure 4 Induction Validation of TSLP in Nasal Mucosa of Allergic Rhinitis (AR) mice (Wang et al., 2012)**  
 Western Blot images showing the TSLP protein detected by anti-mouse TSLP...

## Disclaimer

#### Disclaimer

Optimal dilutions/concentrations should be determined by the end user. The information provided is a guideline for product use. This product is for research use only.