

TSLP Antibody

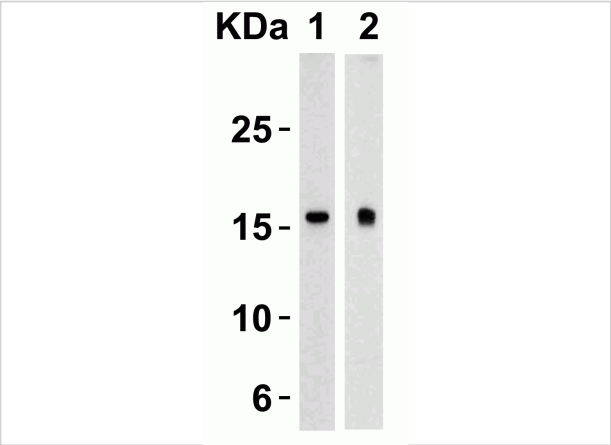
CATALOG NUMBER: 4023

Specifications

Host Species	Rabbit
Species Reactivity	Human, Mouse
Immunogen	Anti-TSLP antibody (4023) was raised against a peptide corresponding to 19 amino acids near the center of human TSLP. The immunogen is located within the amino acids 40-90 of TSLP.
Conjugate	Unconjugated
Tested Applications	ELISA, IF, IHC-P, WB
User Note	Optimal dilutions for each application to be determined by the researcher.
Predicted Molecular Weight	Predicted: 18 kD Observed: 17, 24 kD (Post-modifications: 2 N linked glycosylations)

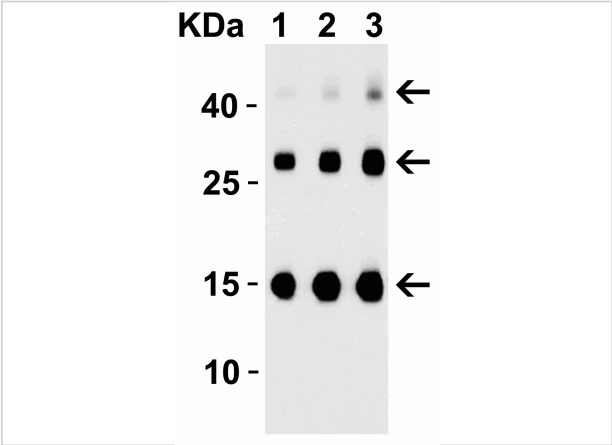
Properties

Purification	TSLP Antibody is affinity chromatography purified via peptide column.
Clonality	Polyclonal
Isotype	IgG
Physical State	Liquid
Buffer	TSLP Antibody is supplied in PBS containing 0.02% sodium azide.
Concentration	1 mg/mL
Storage Conditions	TSLP antibody can be stored at 4°C up to one year. Antibodies should not be exposed to prolonged high temperatures.



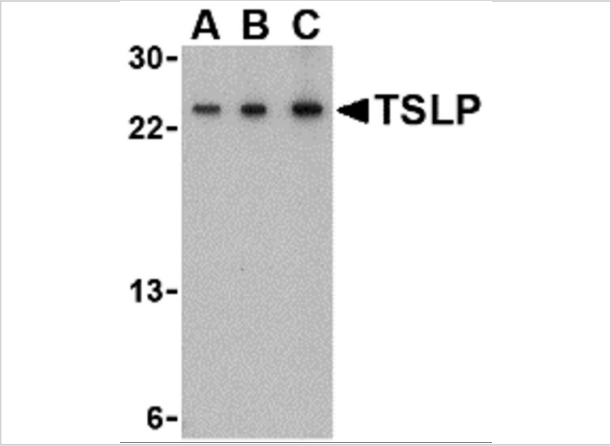
TSLP Antibody 1

Figure 1 Western Blot Validation in Human Heart (Lane 1) and Human Prostate (Lane 2)
 Loading: 15 µg of lysates per lane. Antibodies: TSLP 4023 (4 µg/mL), 1h incubation at RT in 5...



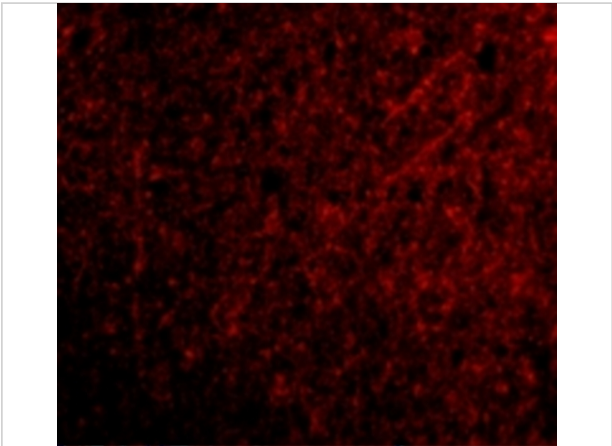
TSLP Antibody 2

Figure 2 Western Blot Validation of TSLP with Human Recombinant protein
 Loading: 30ng of TSLP partial human recombinant protein per lane. Antibodies: TSLP 4023 (Lane 1: 0.25 µ...



TSLP Antibody 3

Figure 3 Western Blot Validation in Mouse A-20 Cell Line
 Loading: 15 µg of lysates per lane. Antibodies: TSLP 4023 (A: 0.5 µg/mL, B: 1 µg/mL, C: 2 µg/mL), 1h incubation at RT in ...



TSLP Antibody 4

Figure 4 Immunofluorescence Validation of TSLP in Human Brain Tissue
 Immunofluorescent analysis of 4% paraformaldehyde-fixed Human Brain Tissue labeling TSLP with 4023 at 20 µg/...

Disclaimer

Disclaimer	Optimal dilutions/concentrations should be determined by the end user. The information provided is a guideline for product use. This product is for research use only.
------------	--

For research use only. For additional information, visit ProSci's [Terms and Conditions Page](#).