

## RPA Interacting Protein Antibody

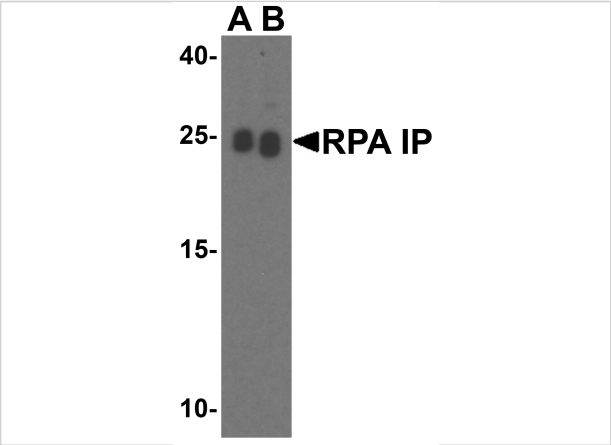
CATALOG NUMBER: 4015

### Specifications

Host Species	Rabbit
Species Reactivity	Human, Mouse, Rat
Immunogen	RPA Interacting Protein antibody was raised against a 17 amino acid synthetic peptide from near the carboxy terminus of human RPA Interacting Protein. The immunogen is located within the first 50 amino acids of RPA Interacting Protein.
Conjugate	Unconjugated
Tested Applications	ELISA, WB
User Note	Optimal dilutions for each application to be determined by the researcher.

### Properties

Purification	RPA Interacting Protein Antibody is affinity chromatography purified via peptide column.
Clonality	Polyclonal
Isotype	IgG
Physical State	Liquid
Buffer	RPA Interacting Protein Antibody is supplied in PBS containing 0.02% sodium azide.
Concentration	1 mg/mL
Storage Conditions	RPA Interacting Protein antibody can be stored at 4°C for three months and -20°C, stable for up to one year. As with all antibodies care should be taken to avoid repeated freeze thaw cycles. Antibodies should not be exposed to prolonged high temperatures.



RPA Interacting Protein Antibody 1

Western blot analysis of RPA Interacting Protein in Jurkat cell lysate with RPA Interacting Protein antibody at (A) 0.5 and (B) 1  $\mu\text{g/mL}$ .

Disclaimer

Disclaimer	Optimal dilutions/concentrations should be determined by the end user. The information provided is a guideline for product use. This product is for research use only.
------------	--

For research use only. For additional information, visit ProSci's [Terms and Conditions Page](#).