

APH1 Antibody

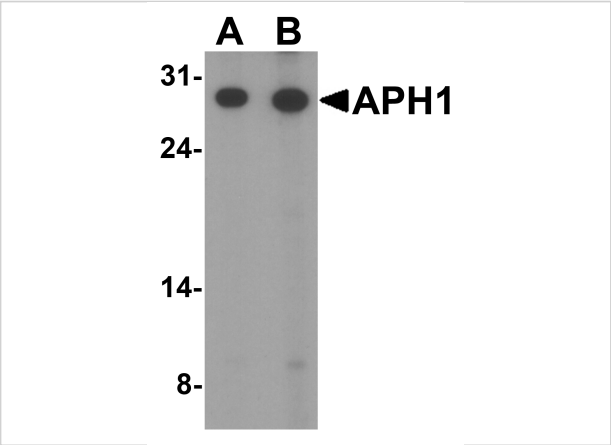
CATALOG NUMBER: 4003

Specifications

Host Species	Rabbit
Species Reactivity	Human, Mouse, Rat
Immunogen	APH1 antibody was raised against a 18 amino acid synthetic peptide from near the center of human APH1. The immunogen is located within amino acids 80 - 130 of APH1.
Conjugate	Unconjugated
Tested Applications	ELISA, IHC-P, WB
User Note	Optimal dilutions for each application to be determined by the researcher.
Predicted Molecular Weight	Predicted: 29 kDa Observed: 28 kDa

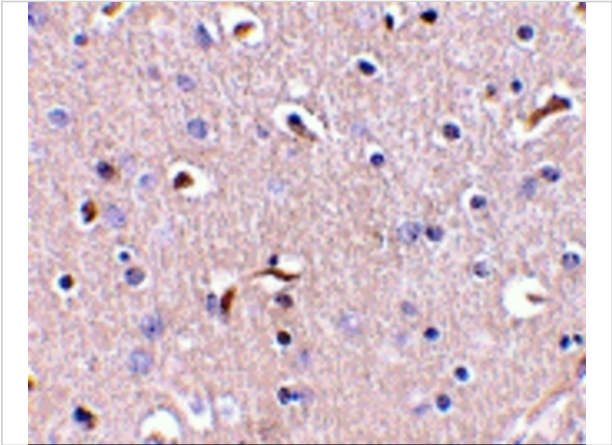
Properties

Purification	APH1 Antibody is affinity chromatography purified via peptide column.
Clonality	Polyclonal
Isotype	IgG
Physical State	Liquid
Buffer	APH1 Antibody is supplied in PBS containing 0.02% sodium azide.
Concentration	1 mg/mL
Storage Conditions	APH1 antibody can be stored at 4°C for three months and -20°C, stable for up to one year. As with all antibodies care should be taken to avoid repeated freeze thaw cycles. Antibodies should not be exposed to prolonged high temperatures.



APH1 Antibody 1

Western blot analysis of APH1 in RAW264.7 cell lysate with APH1 antibody at (A) 1 and (B) 2 µg/mL.



APH1 Antibody 2

Immunohistochemistry of APH1 in human brain tissue with APH1 antibody at 5 µg/mL.

Disclaimer

Disclaimer	Optimal dilutions/concentrations should be determined by the end user. The information provided is a guideline for product use. This product is for research use only.
------------	--

For research use only. For additional information, visit ProSci's [Terms and Conditions Page](#).