

## TIM-1 Antibody

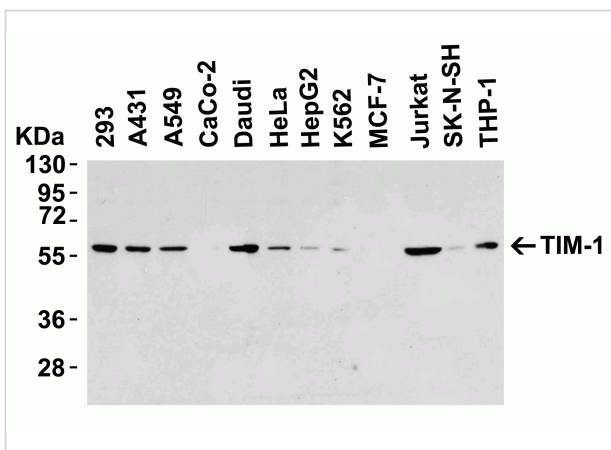
CATALOG NUMBER: 3809

### Specifications

Host Species	Rabbit
Species Reactivity	Human, Mouse
Homology	Predicted species reactivity based on immunogen sequence: Rat: (56.3%)
Immunogen	Anti-TIM-1 antibody ( <b>3809</b> ) was raised against a peptide corresponding to 16 amino acids near the amino terminus of human TIM-1. The immunogen is located within amino acids 50 - 100 of TIM-1.
Conjugate	Unconjugated
Tested Applications	ELISA, IF, IHC-P, WB
User Note	Optimal dilutions for each application to be determined by the researcher.
Predicted Molecular Weight	Predicted: 44kD Observed: 60kD (Post-modification: 4 N-linked glycosylation)

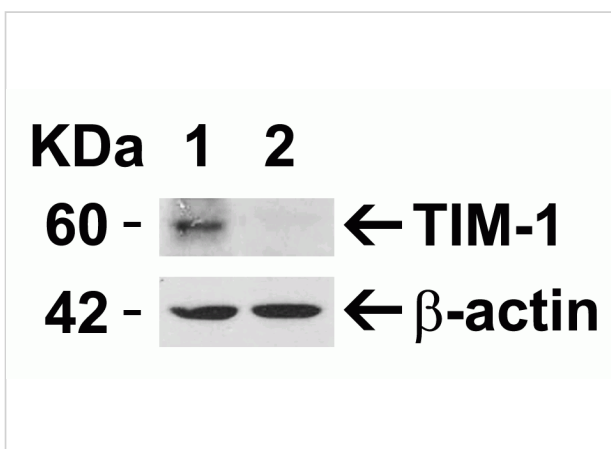
### Properties

Purification	TIM-1 Antibody is affinity chromatography purified via peptide column.
Clonality	Polyclonal
Isotype	IgG
Physical State	Liquid
Buffer	TIM-1 Antibody is supplied in PBS containing 0.02% sodium azide.
Concentration	1 mg/mL
Storage Conditions	TIM-1 antibody can be stored at 4°C up to one year. Antibodies should not be exposed to prolonged high temperatures.



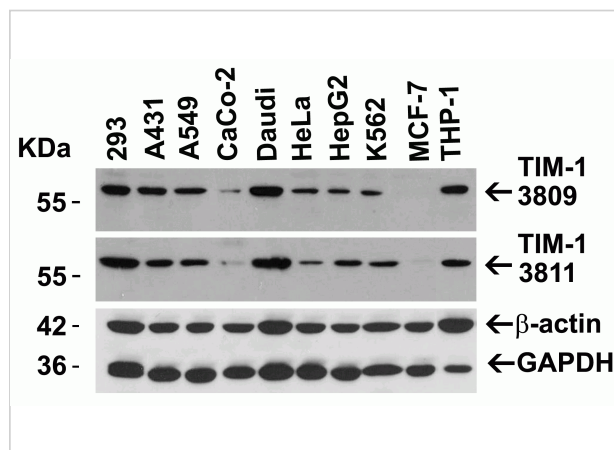
## TIM-1 Antibody 1

**Figure 1 Western Blot Validation in Human Cell Lines**  
Loading: 15 µg of lysates per lane. Antibodies: TIM-1 3809 (8 µg/mL), overnight incubation at 4° C in 5% NFDM/TBST. Secondary:...



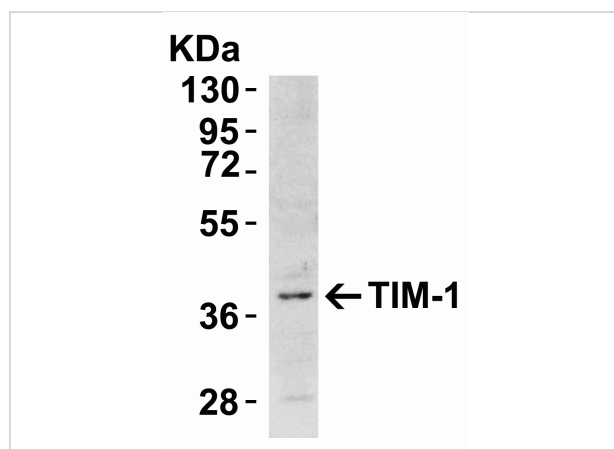
### TIM-1 Antibody 3

**Figure 3 Validation with TIM-1 siRNA Knockdown in Hela Cells**  
Hela cells were transfected with control siRNAs (lane 1) or TIM-1 siRNAs (lane 2) Loading: 15 µg of HeLa whole cell ...



## TIM-1 Antibody 2

**Figure 2 Independent Antibody Validation (IAV) via Protein Expression Profile in Cell Lines**  
Loading: 15 µg of lysates per lane.Antibodies: TIM-1 3809 (8 µg/mL), TIM-1 3811 (1 µg...)



## TIM-1 Antibody 4

**Figure 4 Western Blot Validation in the Mouse Cell Line**  
Loading: 15 µg of NIH/3T3 cell lysates. Antibodies: TIM-1 3809 (8 µg/mL), overnight incubation at 4°C in 5% NFDM/TBST. Sec...

## Disclaimer

<b>Disclaimer</b>	Optimal dilutions/concentrations should be determined by the end user. The information provided is a guideline for product use. This product is for research use only.
-------------------	--