

SOCS1 Antibody

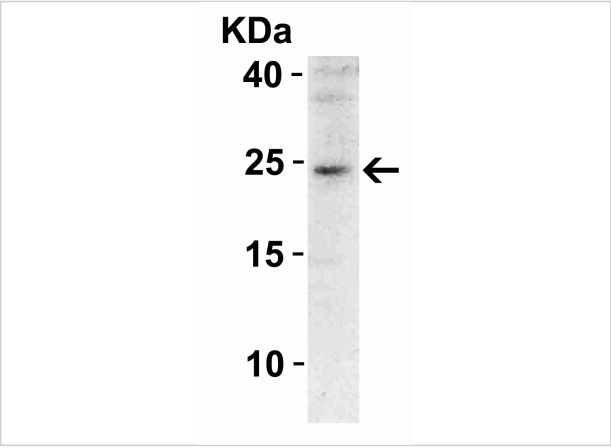
CATALOG NUMBER: 3767

Specifications

Host Species	Rabbit
Species Reactivity	Human
Immunogen	SOCS1 antibody was raised against a 17 amino acid synthetic peptide from near the amino terminus of human SOCS1. The immunogen is located within the first 50 amino acids of SOCS1.
Conjugate	Unconjugated
Tested Applications	ELISA, WB
User Note	Optimal dilutions for each application to be determined by the researcher.

Properties

Purification	SOCS1 Antibody is affinity chromatography purified via peptide column.
Clonality	Polyclonal
Isotype	IgG
Physical State	Liquid
Buffer	SOCS1 Antibody is supplied in PBS containing 0.02% sodium azide.
Concentration	1 mg/mL
Storage Conditions	SOCS1 antibody can be stored at 4°C for three months and -20°C, stable for up to one year. As with all antibodies care should be taken to avoid repeated freeze thaw cycles. Antibodies should not be exposed to prolonged high temperatures.



SOCS1 Antibody 1

WB Validation in Rat Pancreas
Loading: 15 µg of cell lysate Antibodies: SOCS1 3767, 2 µg/ml, 1 h incubation at RT in 5% NFDm/TBST.Secondary: Goat Anti-Rabbit IgG HRP conjugat...

Disclaimer

Disclaimer	Optimal dilutions/concentrations should be determined by the end user. The information provided is a guideline for product use. This product is for research use only.
------------	--

For research use only. For additional information, visit ProSci's [Terms and Conditions Page](#).