

T-cadherin Antibody

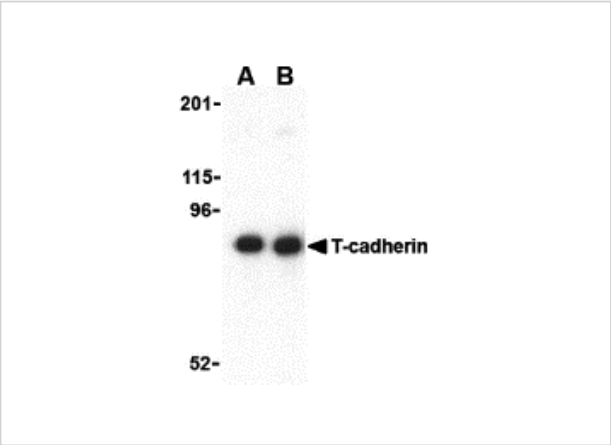
CATALOG NUMBER: 3583

Specifications

Host Species	Rabbit
Species Reactivity	Human, Mouse
Homology	Predicted species reactivity based on immunogen sequence: Bovine: (93%)
Immunogen	T-cadherin antibody was raised against a 15 amino acid synthetic peptide from near the amino terminus of human T-cadherin. The immunogen is located within amino acids 150 - 200 of T-cadherin.
Conjugate	Unconjugated
Tested Applications	ELISA, IF, IHC-P, WB
User Note	Optimal dilutions for each application to be determined by the researcher.
Specificity	At least two isoforms of T-cadherin are known to exist.
Predicted Molecular Weight	Predicted: 78, 84 kDa Observed: 85 kDa

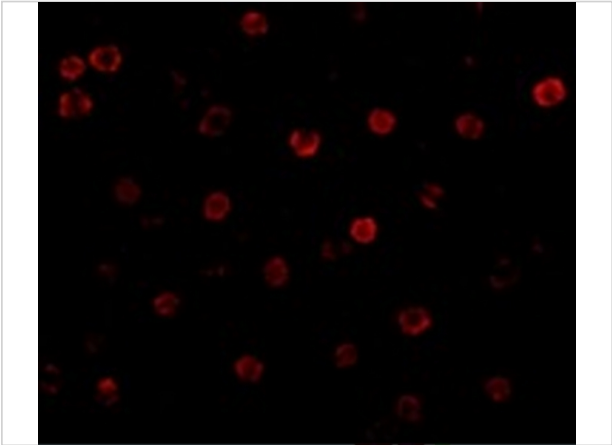
Properties

Purification	T-cadherin Antibody is affinity chromatography purified via peptide column.
Clonality	Polyclonal
Isotype	IgG
Physical State	Liquid
Buffer	T-cadherin Antibody is supplied in PBS containing 0.02% sodium azide.
Concentration	1 mg/mL
Storage Conditions	T-cadherin antibody can be stored at 4°C for three months and -20°C, stable for up to one year. As with all antibodies care should be taken to avoid repeated freeze thaw cycles. Antibodies should not be exposed to prolonged high temperatures.



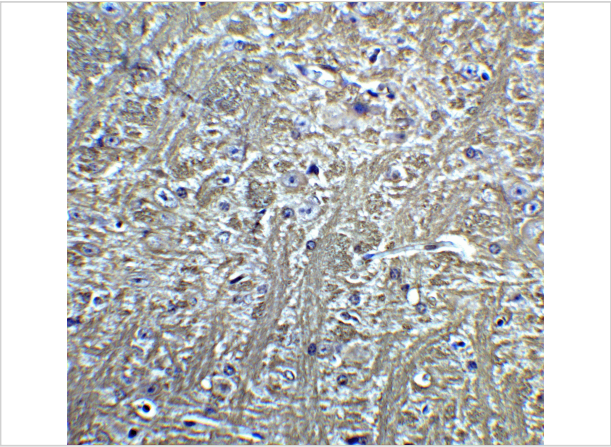
T-cadherin Antibody 1

Western blot analysis of T-cadherin in 3T3 lysate with T-cadherin antibody at (A) 0.5 and (B) 1 µg/mL.



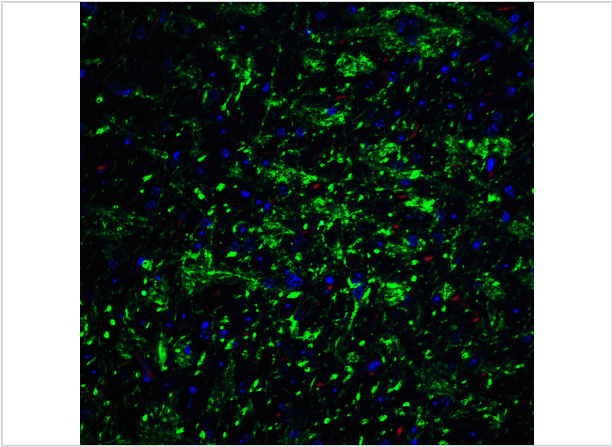
T-cadherin Antibody 2

Immunofluorescence of T-cadherin in K562 cells with T-cadherin antibody at 20 µg/mL.



T-cadherin Antibody 4

Immunofluorescence of T-cadherin in 3T3 cells with T-cadherin antibody at 2 µg/mL.



T-cadherin Antibody 5

Immunohistochemistry of T cadherin in mouse brain tissue with T cadherin Antibody at 5 µg/mL.

Disclaimer

Disclaimer	Optimal dilutions/concentrations should be determined by the end user. The information provided is a guideline for product use. This product is for research use only.
------------	--

For research use only. For additional information, visit ProSci's [Terms and Conditions Page](#).