

TRIM28 Antibody

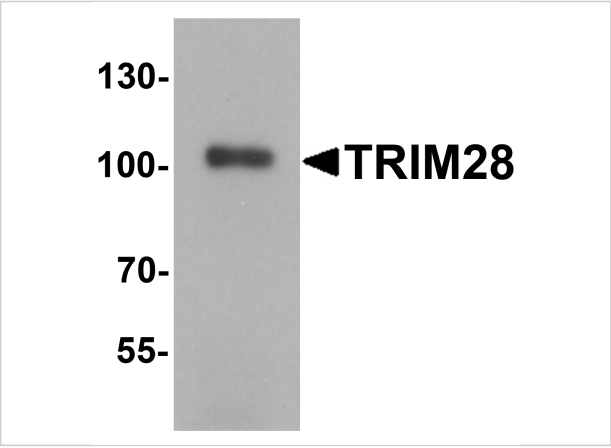
CATALOG NUMBER: 2521

Specifications

Host Species	Rabbit
Species Reactivity	Human, Mouse, Rat
Immunogen	Rabbit polyclonal TRIM28 antibody was raised against a 14 amino acid peptide near the carboxy terminus of human TRIM28. The immunogen is located within the last 50 amino acids of TRIM28.
Conjugate	Unconjugated
Tested Applications	ELISA, WB
User Note	Optimal dilutions for each application to be determined by the researcher.
Specificity	At least three isoforms of TRIM28 are known to exist; this antibody will detect all three isoforms
Predicted Molecular Weight	Predicted: 92 kDa

Properties

Purification	TRIM28 Antibody is affinity chromatography purified via peptide column.
Clonality	Polyclonal
Isotype	IgG
Physical State	Liquid
Buffer	TRIM28 Antibody is supplied in PBS containing 0.02% sodium azide.
Concentration	1 mg/mL
Storage Conditions	TRIM28 antibody can be stored at 4°C for three months and -20°C, stable for up to one year.



TRIM28 Antibody 1

Western blot analysis of TRIM28 in human testis tissue lysate with TRIM28 antibody at 1 µg/mL.

Disclaimer

Disclaimer	Optimal dilutions/concentrations should be determined by the end user. The information provided is a guideline for product use. This product is for research use only.
------------	--

For research use only. For additional information, visit ProSci's [Terms and Conditions Page](#).