

CARD9 Antibody

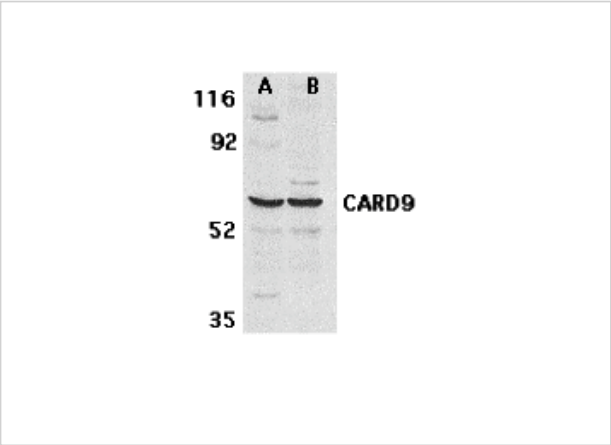
CATALOG NUMBER: 2515

Specifications

Host Species	Rabbit
Species Reactivity	Human
Homology	Predicted species reactivity based on immunogen sequence: Mouse: (88%), Rat: (82%)
Immunogen	CARD9 antibody was raised against a 16 amino acid peptide near the carboxy terminus of human CARD9. The immunogen is located within the last 50 amino acids of CARD9.
Conjugate	Unconjugated
Tested Applications	ELISA, ICC, WB
User Note	Optimal dilutions for each application to be determined by the researcher.
Predicted Molecular Weight	59 kDa

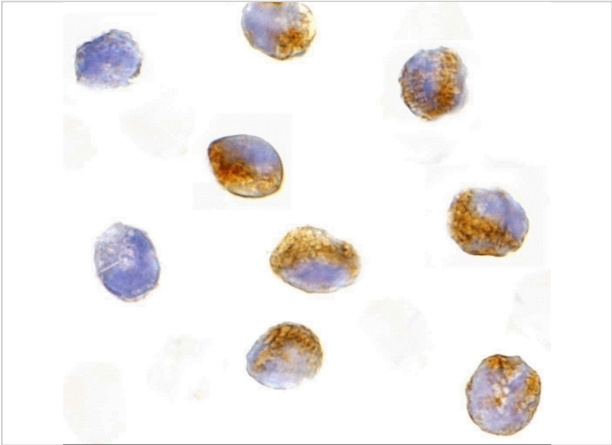
Properties

Purification	CARD9 Antibody is affinity chromatography purified via peptide column.
Clonality	Polyclonal
Isotype	IgG
Physical State	Liquid
Buffer	CARD9 Antibody is supplied in PBS containing 0.02% sodium azide.
Concentration	1 mg/ml
Storage Conditions	CARD9 antibody can be stored at 4°C for three months and -20°C, stable for up to one year. As with all antibodies care should be taken to avoid repeated freeze thaw cycles. Antibodies should not be exposed to prolonged high temperatures.



CARD9 Antibody 1

Western blot analysis of CARD9 expression in human MDA-MB-361 (A) and PC-3 (B) cell lysate with CARD9 antibody at 2.5 µg/mL.



CARD9 Antibody 2

Immunocytochemistry of CARD9 in K562 cells with CARD9 antibody at 10 µg/mL.

Disclaimer

Disclaimer	Optimal dilutions/concentrations should be determined by the end user. The information provided is a guideline for product use. This product is for research use only.
------------	------------------------------------------------------------------------------------------------------------------------------------------------------------------------

For research use only. For additional information, visit ProSci's [Terms and Conditions Page](#).