

## Akt1 Antibody

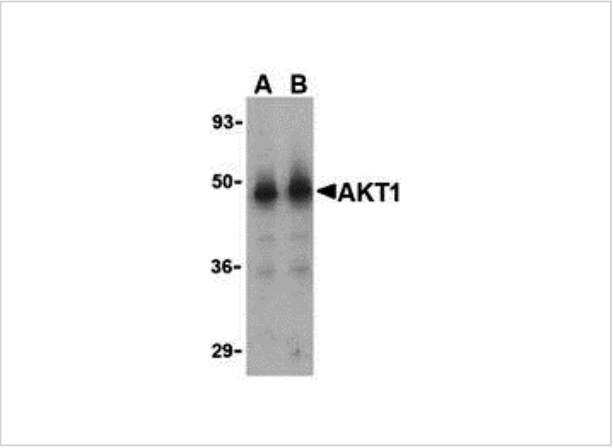
CATALOG NUMBER: 3519

### Specifications

Host Species	Rabbit
Species Reactivity	Human, Mouse, Rat
Homology	Predicted species reactivity based on immunogen sequence: Bovine: (81%)
Immunogen	Akt1 antibody was raised against a 16 amino acid synthetic peptide from near the amino-terminus of human Akt1. The immunogen is located within amino acids 20 - 70 of Akt1.
Conjugate	Unconjugated
Tested Applications	ELISA, IF, IHC-P, IP, WB
User Note	Optimal dilutions for each application to be determined by the researcher.

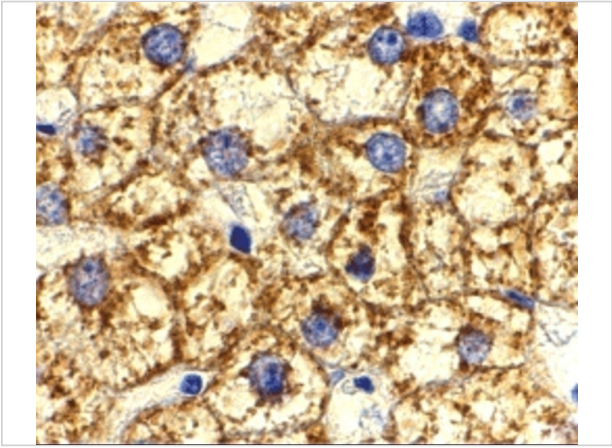
### Properties

Purification	Akt1 Antibody is affinity chromatography purified via peptide column.
Clonality	Polyclonal
Isotype	IgG
Physical State	Liquid
Buffer	Akt1 Antibody is supplied in PBS containing 0.02% sodium azide.
Concentration	1 mg/mL
Storage Conditions	Akt1 antibody can be stored at 4°C for three months and -20°C, stable for up to one year. As with all antibodies care should be taken to avoid repeated freeze thaw cycles. Antibodies should not be exposed to prolonged high temperatures.



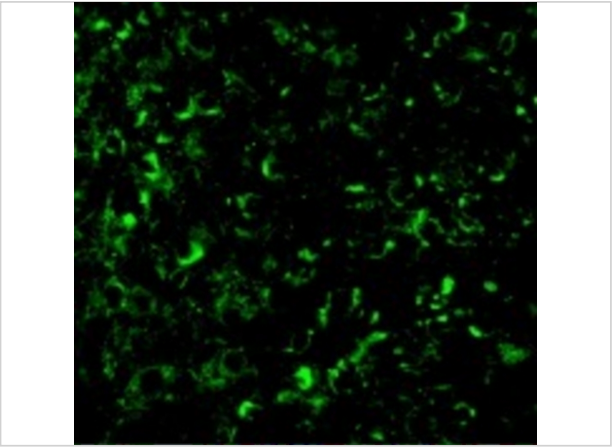
**Akt1 Antibody 1**

Western blot analysis of Akt1 in human liver cell lysate with Akt1 antibody at (A) 1 and (B) 2 µg/mL.



**Akt1 Antibody 2**

Immunohistochemistry of Akt1 in human liver cells with Akt1 antibody at 2 µg/mL.



**Akt1 Antibody 3**

Immunofluorescence of Akt1 in Human Liver cells with Akt1 antibody at 20 µg/mL.

**Disclaimer**

<b>Disclaimer</b>	Optimal dilutions/concentrations should be determined by the end user. The information provided is a guideline for product use. This product is for research use only.
-------------------	--

For research use only. For additional information, visit ProSci's [Terms and Conditions Page](#).