

## Caspase-8 Antibody

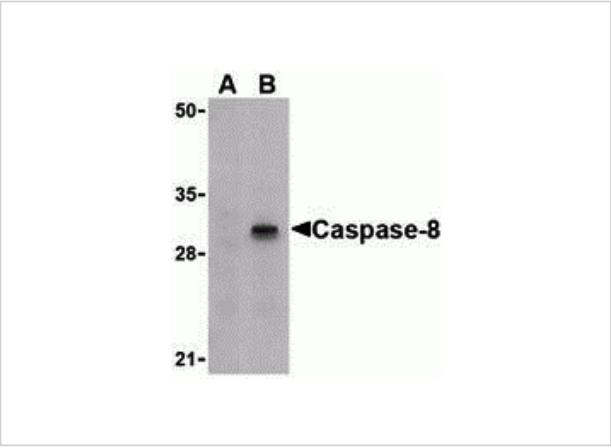
CATALOG NUMBER: 3475

### Specifications

Host Species	Rabbit
Species Reactivity	Human, Mouse
Immunogen	Caspase-8 antibody was raised against a 15 amino acid synthetic peptide from near the carboxy terminus human caspase-8 isoform E. The immunogen is located within the last 50 amino acids of Caspase-8.
Conjugate	Unconjugated
Tested Applications	ELISA, WB
User Note	Optimal dilutions for each application to be determined by the researcher.

### Properties

Purification	Caspase-8 Antibody is affinity chromatography purified via peptide column.
Clonality	Polyclonal
Isotype	IgG
Physical State	Liquid
Buffer	Caspase-8 Antibody is supplied in PBS containing 0.02% sodium azide.
Concentration	1 mg/mL
Storage Conditions	Caspase-8 antibody can be stored at 4°C for three months and -20°C, stable for up to one year. As with all antibodies care should be taken to avoid repeated freeze thaw cycles. Antibodies should not be exposed to prolonged high temperatures.



### Caspase-8 Antibody 1

Western blot analysis of Caspase-8 in HT-29 cell lysate with Caspase-8 antibody (IN) at 1 µg/mL in (A) the presence or (B) the absence of blocking peptide.

### Disclaimer

Disclaimer	Optimal dilutions/concentrations should be determined by the end user. The information provided is a guideline for product use. This product is for research use only.
------------	--

For research use only. For additional information, visit ProSci's [Terms and Conditions Page](#).