



ProSci Incorporated  
12170 Flint Place  
Poway, CA 92064, USA  
prosci-inc.com

P: +1 (888) 513-9525  
Local: +1 (858) 513-2638  
Fax: +1 (858) 513-2692

customercare@prosci-inc.com  
techsupport@prosci-inc.com

## KappaB ras2 Antibody

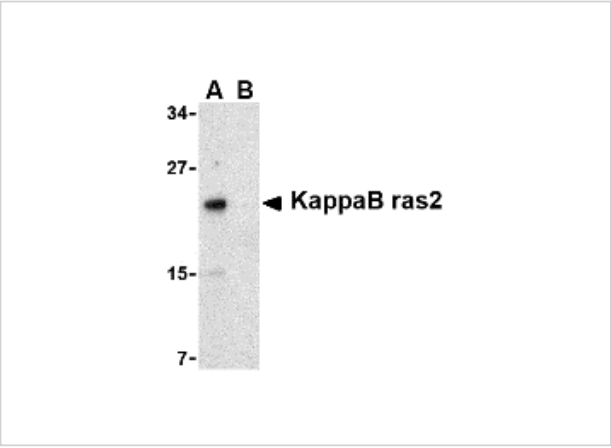
CATALOG NUMBER: 2495

### Specifications

|                     |   |
|---------------------|---|
| Host Species        | Rabbit  |
| Species Reactivity  | Human, Mouse, Rat   |
| Homology            | Predicted species reactivity based on immunogen sequence: Chicken: (93%)  |
| Immunogen           | KappaB ras2 antibody was raised against a 14 amino acid synthetic peptide from near the carboxy terminus of human KappaB ras2.<br>The immunogen is located within the last 50 amino acids of KappaB ras2. |
| Conjugate           | Unconjugated  |
| Tested Applications | ELISA, WB   |
| User Note           | Optimal dilutions for each application to be determined by the researcher.  |

### Properties

|                    |   |
|--------------------|---|
| Purification       | KappaB ras2 Antibody is affinity chromatography purified via peptide column.  |
| Clonality          | Polyclonal  |
| Isotype            | IgG   |
| Physical State     | Liquid  |
| Buffer             | KappaB ras2 Antibody is supplied in PBS containing 0.02% sodium azide.  |
| Concentration      | 1 mg/ml   |
| Storage Conditions | KappaB ras2 antibody can be stored at 4°C for three months and -20°C, stable for up to one year. As with all antibodies care should be taken to avoid repeated freeze thaw cycles. Antibodies should not be exposed to prolonged high temperatures. |



KappaB ras2 Antibody 1

Western blot analysis of KappaB ras2 in RAW264.7 cell lysate with KappaB ras2 antibody at 1 µg/mL in the (A) absence and (B) presence of blocking peptide.

Disclaimer

|            |  |
|------------|--|
| Disclaimer | Optimal dilutions/concentrations should be determined by the end user. The information provided is a guideline for product use. This product is for research use only. |
|------------|--|

For research use only. For additional information, visit ProSci's [Terms and Conditions Page](#).