

MCG10 Antibody

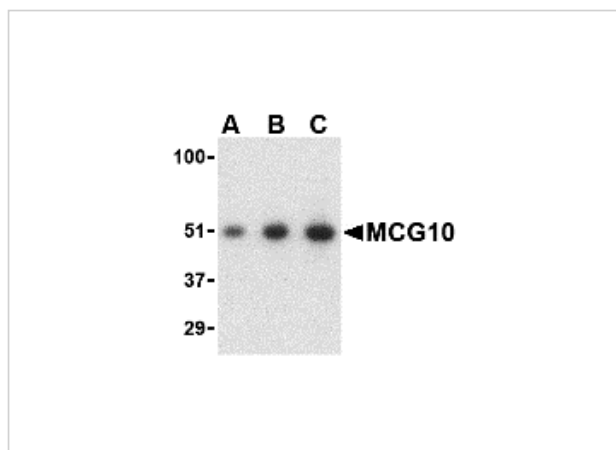
CATALOG NUMBER: 2479

Specifications

Host Species	Rabbit
Species Reactivity	Human
Homology	Predicted species reactivity based on immunogen sequence: Mouse: (100%), Bovine: (100%)
Immunogen	MCG10 antibody was raised against a 17 amino acid synthetic peptide from near the carboxy terminus of human MCG10. The immunogen is located within the last 50 amino acids of MCG10.
Conjugate	Unconjugated
Tested Applications	ELISA, ICC, IF, WB
User Note	Optimal dilutions for each application to be determined by the researcher.

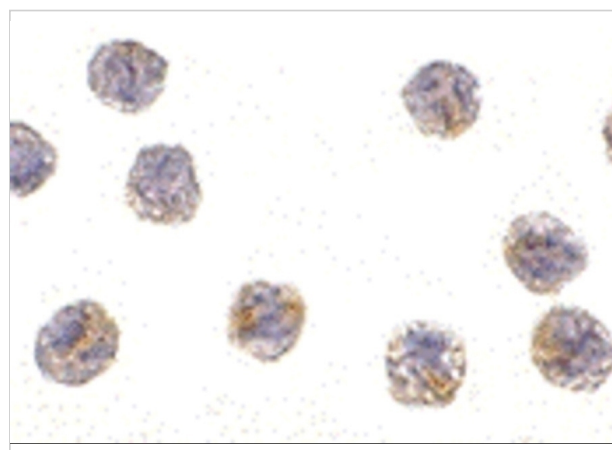
Properties

Purification	MCG10 Antibody is affinity chromatography purified via peptide column.
Clonality	Polyclonal
Isotype	IgG
Physical State	Liquid
Buffer	MCG10 Antibody is supplied in PBS containing 0.02% sodium azide.
Concentration	1 mg/ml
Storage Conditions	MCG10 antibody can be stored at 4°C for three months and -20°C, stable for up to one year. As with all antibodies care should be taken to avoid repeated freeze thaw cycles. Antibodies should not be exposed to prolonged high temperatures.



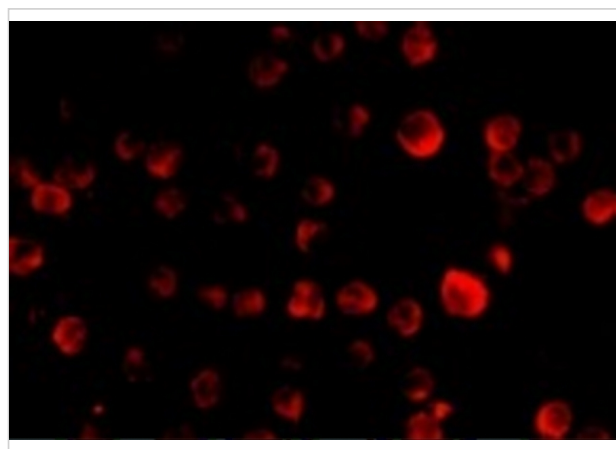
MCG10 Antibody 1

Western blot analysis of MCG10 in HeLa cell lysate with MCG10 antibody at (A) 0.5, (B) 1 and (C) 2 $\mu\text{g/mL}$.



MCG10 Antibody 2

Immunocytochemistry of MCG10 in HeLa cells with MCG10 antibody at 1 $\mu\text{g/mL}$.



MCG10 Antibody 3

Immunofluorescence of MCG10 in HeLa cells with MCG10 antibody at 20 $\mu\text{g/mL}$.

Disclaimer

Disclaimer

Optimal dilutions/concentrations should be determined by the end user. The information provided is a guideline for product use. This product is for research use only.

For research use only. For additional information, visit ProSci's [Terms and Conditions Page](#).