

Bcl-xL Antibody

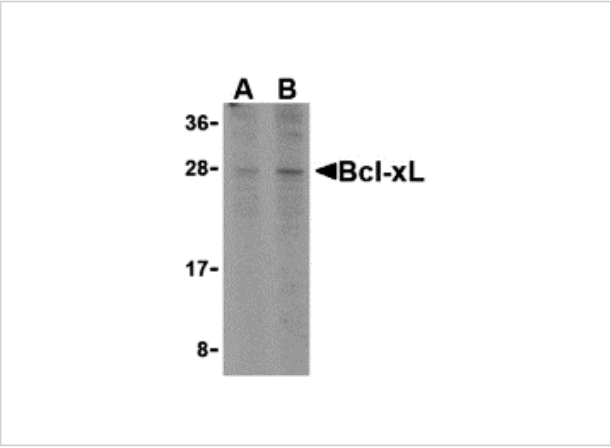
CATALOG NUMBER: 3341

Specifications

Host Species	Rabbit
Species Reactivity	Human
Homology	Predicted species reactivity based on immunogen sequence: Pig: (100%), Rat: (100%), Mouse: (100%)
Immunogen	Bcl-xL antibody was raised against a peptide corresponding to 14 amino acids near the carboxy terminus of human Bcl-xL. The immunogen is located within the last 50 amino acids of Bcl-xL.
Conjugate	Unconjugated
Tested Applications	ELISA, WB
User Note	Optimal dilutions for each application to be determined by the researcher.

Properties

Purification	Bcl-xL Antibody is supplied as ion exchange chromatography purified IgG.
Clonality	Polyclonal
Isotype	IgG
Physical State	Liquid
Buffer	Bcl-xL Antibody is supplied in PBS containing 0.02% sodium azide.
Concentration	1 mg/mL
Storage Conditions	Bcl-xL antibody can be stored at 4°C for three months and -20°C, stable for up to one year. As with all antibodies care should be taken to avoid repeated freeze thaw cycles. Antibodies should not be exposed to prolonged high temperatures.



Bcl-xL Antibody 1

Western blot analysis of Bcl-xL in A549 cell lysates with Bcl-xL antibody at (A) 1 and (B) 2 µg/mL.

Disclaimer

Disclaimer	Optimal dilutions/concentrations should be determined by the end user. The information provided is a guideline for product use. This product is for research use only.
------------	--

For research use only. For additional information, visit ProSci's [Terms and Conditions Page](#).