

Bcl-2 Antibody

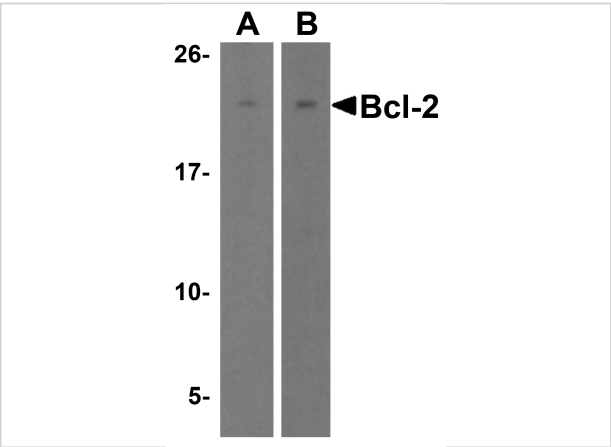
CATALOG NUMBER: 3337

Specifications

Host Species	Rabbit
Species Reactivity	Human, Mouse
Homology	Predicted species reactivity based on immunogen sequence: Bovine: (100%), Rat: (93%), Chicken: (86%)
Immunogen	Anti-Bcl-2 antibody (3337) was raised against a peptide corresponding to 14 amino acids near the center of human Bcl-2. The immunogen is located within amino acids 80-130 of Bcl-2.
Conjugate	Unconjugated
Tested Applications	ELISA, ICC, WB
User Note	Optimal dilutions for each application to be determined by the researcher.
Predicted Molecular Weight	Predicted: 26kD Observed: 26 kD

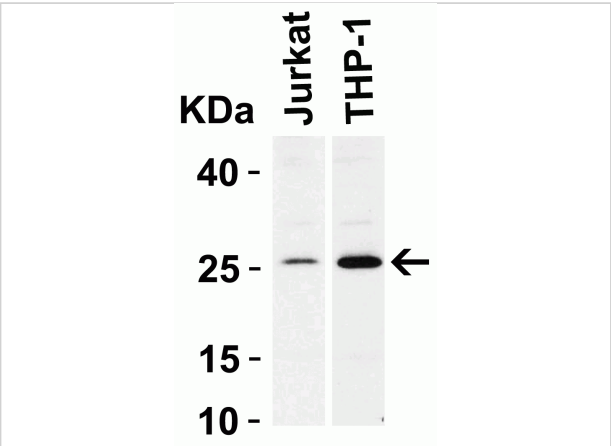
Properties

Purification	Bcl-2 Antibody is Ion exchange chromatography purified.
Clonality	Polyclonal
Isotype	IgG
Physical State	Liquid
Buffer	Bcl-2 Antibody is supplied in PBS containing 0.02% sodium azide.
Concentration	1 mg/mL
Storage Conditions	Bcl-2 antibody can be stored at 4°C for three months and -20°C, stable for up to one year. As with all antibodies care should be taken to avoid repeated freeze thaw cycles. Antibodies should not be exposed to prolonged high temperatures.



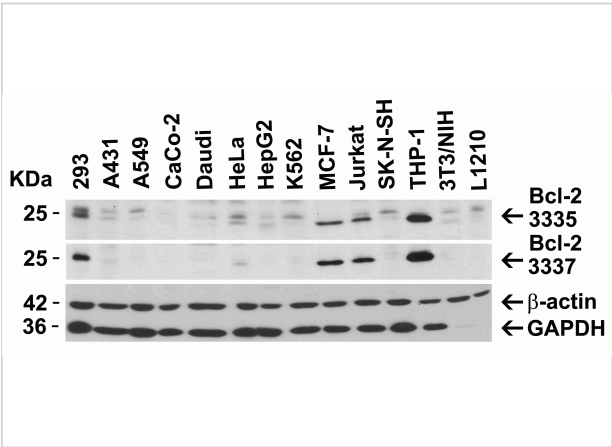
Bcl-2 Antibody 1

Figure 1 Western Blot Validation in Human and Mouse Cell Lines
 Loading: 15 µg of lysates per lane. Antibodies: Bcl-2 3337, (2 µg/mL), 1h incubation at RT in 5% NFDm/TBST. Secondary: Goat anti-mouse IgG (1:1000) in 5% NFDm/TBST. Goat anti-mouse IgG (1:1000) in 5% NFDm/TBST.



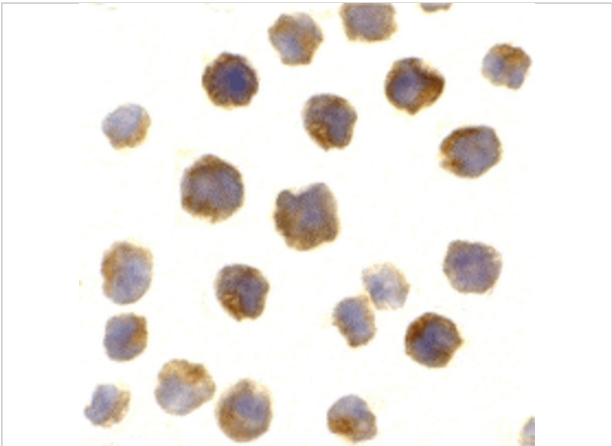
Bcl-2 Antibody 3

Figure 3 Western Blot Validation in Human Cell Lines
 Loading: 15 µg of lysates per lane. Antibodies: Bcl-2 3337, (2 µg/mL), 1h incubation at RT in 5% NFDm/TBST. Secondary: Goat anti-mouse IgG (1:1000) in 5% NFDm/TBST.



Bcl-2 Antibody 2

Figure 2 Independent Antibody Validation (IAV) via Protein Expression Profile in Cell Lines
 Loading: 15 µg of lysates per lane. Antibodies: Bcl-2 3335, (2 µg/mL), Bcl-2 3337, (2 µg/mL), 1h incubation at RT in 5% NFDm/TBST. Secondary: Goat anti-mouse IgG (1:1000) in 5% NFDm/TBST.



Bcl-2 Antibody 4

Figure 4 Immunocytochemistry Validation of Bcl-2 in Mouse A-20 Cells
 Immunocytochemical analysis of Mouse A-20 cells using anti-Bcl-2 antibody (3337) at 2 µg/ml. Cells were fixed and stained with DAPI (blue) and Bcl-2 (brown).

Disclaimer

Disclaimer

Optimal dilutions/concentrations should be determined by the end user. The information provided is a guideline for product use. This product is for research use only.