

PID Antibody

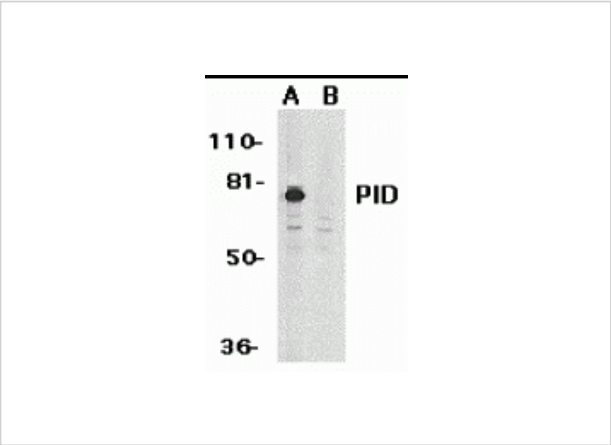
CATALOG NUMBER: 2443

Specifications

Host Species	Rabbit
Species Reactivity	Human, Mouse, Rat
Immunogen	PID antibody was raised against a 17 amino acid peptide near the carboxy terminus of human PID. The immunogen is located within the last 50 amino acids of PID.
Conjugate	Unconjugated
Tested Applications	ELISA, ICC, IF, IHC-P, WB
User Note	Optimal dilutions for each application to be determined by the researcher.
Specificity	PID antibody is predicted to not cross-react with MTA2
Predicted Molecular Weight	Predicted: 73 kDa Observed: 75 kDa

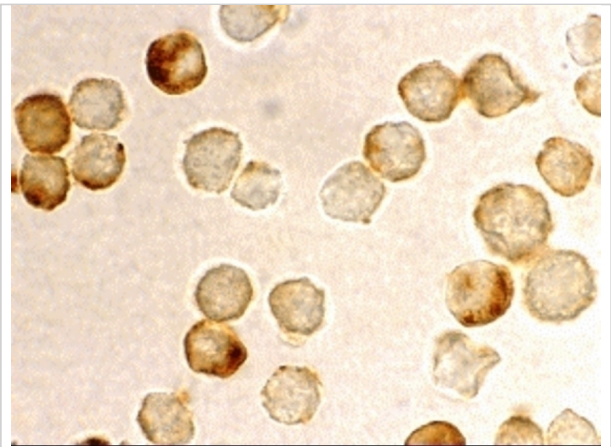
Properties

Purification	PID Antibody is affinity chromatography purified via peptide column.
Clonality	Polyclonal
Isotype	IgG
Physical State	Liquid
Buffer	PID Antibody is supplied in PBS containing 0.02% sodium azide.
Concentration	1 mg/mL
Storage Conditions	PID antibody can be stored at 4°C for three months and -20°C, stable for up to one year. As with all antibodies care should be taken to avoid repeated freeze thaw cycles. Antibodies should not be exposed to prolonged high temperatures.



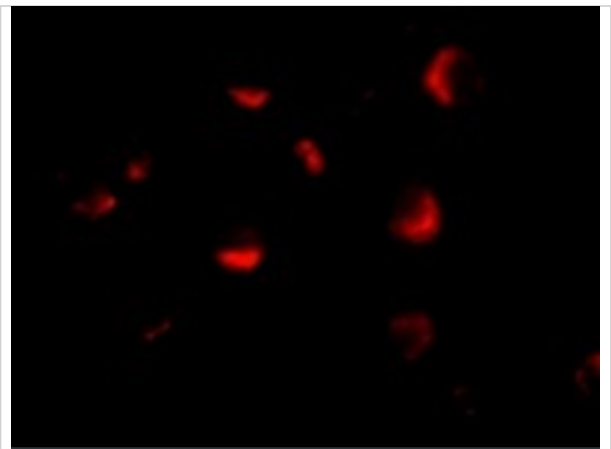
PID Antibody 1

Western blot analysis of PID expression in HeLa whole cell lysates in the absence (A) or presence (B) of blocking peptide with PID antibody at 1 µg/mL.



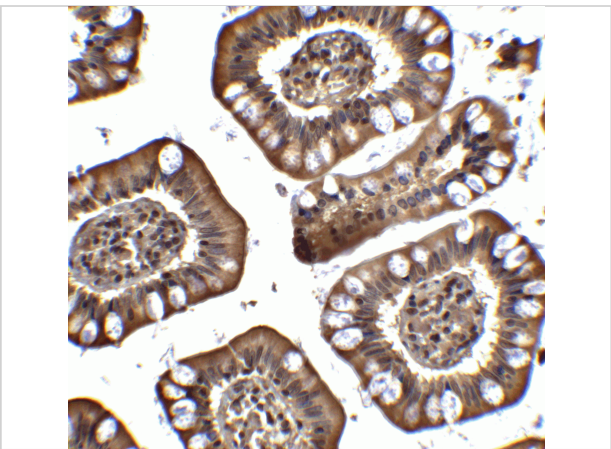
PID Antibody 2

Immunocytochemistry staining of HeLa using PID antibody at 10 µg/mL.



PID Antibody 3

Immunofluorescence of PID in HeLa cells with PID antibody at 10 µg/mL.



PID Antibody 4

Immunohistochemistry of PID in human small intestine tissue with PID antibody at 2.5 µg/mL.

Disclaimer

Disclaimer	Optimal dilutions/concentrations should be determined by the end user. The information provided is a guideline for product use. This product is for research use only.
------------	--

For research use only. For additional information, visit ProSci's [Terms and Conditions Page](#).