

BCMA Antibody

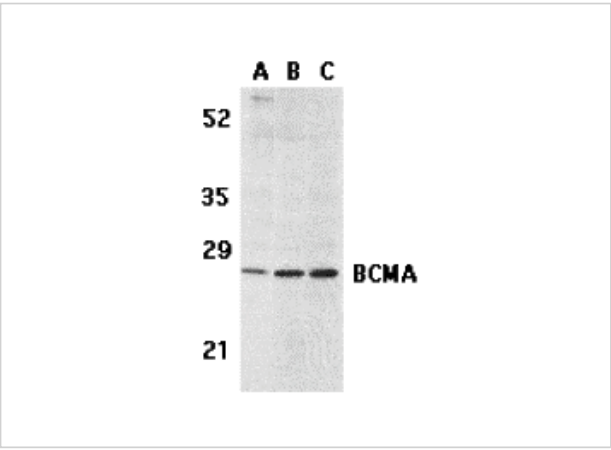
CATALOG NUMBER: 2397

Specifications

Host Species	Rabbit
Species Reactivity	Human
Immunogen	BCMA antibody was raised against a 16 amino acid synthetic peptide mapping at the carboxy terminus of human BCMA. The immunogen is located within the last 50 amino acids of BCMA.
Conjugate	Unconjugated
Tested Applications	ELISA, IF, IHC-P, WB
User Note	Optimal dilutions for each application to be determined by the researcher.
Predicted Molecular Weight	Predicted: 20 kDa Observed: 27 kDa

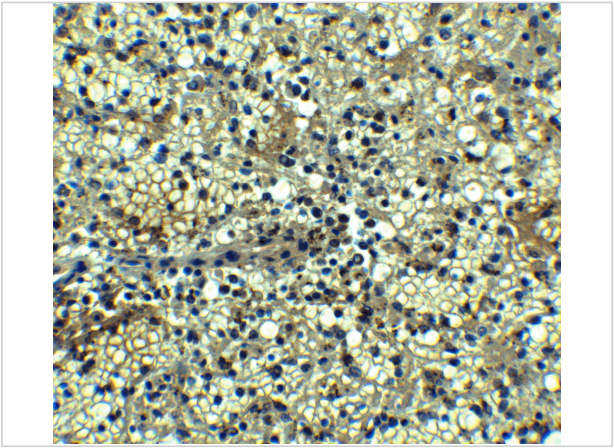
Properties

Purification	BCMA Antibody is affinity chromatography purified via peptide column.
Clonality	Polyclonal
Isotype	IgG
Physical State	Liquid
Buffer	BCMA Antibody is supplied in PBS containing 0.02% sodium azide.
Concentration	1 mg/mL
Storage Conditions	BCMA antibody can be stored at 4°C up to one year. Antibodies should not be exposed to prolonged high temperatures.



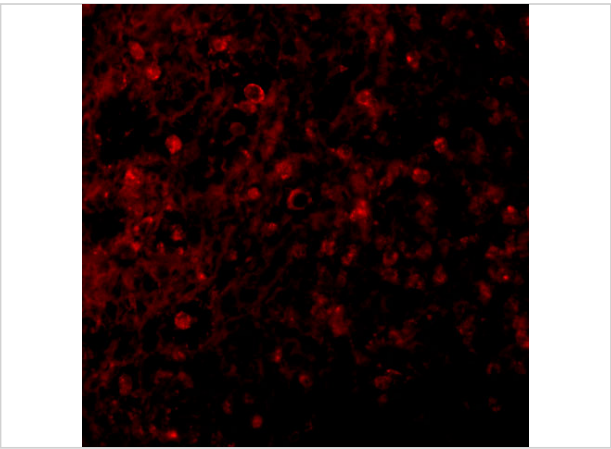
BCMA Antibody 1

Western blot analysis of BCMA in (A) human spleen tissue lysate, (B) K562, and (C) U937 cell lysates with BCMA antibody at 5 µg/mL.



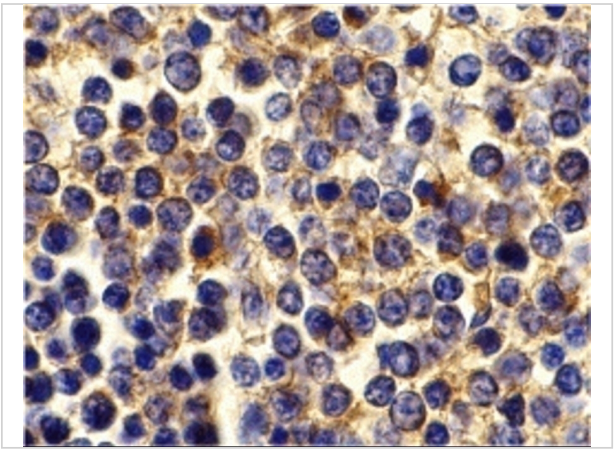
BCMA Antibody 2

Immunohistochemistry of BCMA in human spleen tissue with BCMA antibody at 5 µg/mL.



BCMA Antibody 3

Immunofluorescence of BCMA in Human Spleen tissue with BCMA antibody at 10 µg/mL.



BCMA Antibody 4

Immunohistochemistry of BCMA in human spleen tissue with BCMA antibody at 10 µg/mL.

Disclaimer

Disclaimer	Optimal dilutions/concentrations should be determined by the end user. The information provided is a guideline for product use. This product is for research use only.
------------	--

For research use only. For additional information, visit ProSci's [Terms and Conditions Page](#).