

DEDD2 Antibody

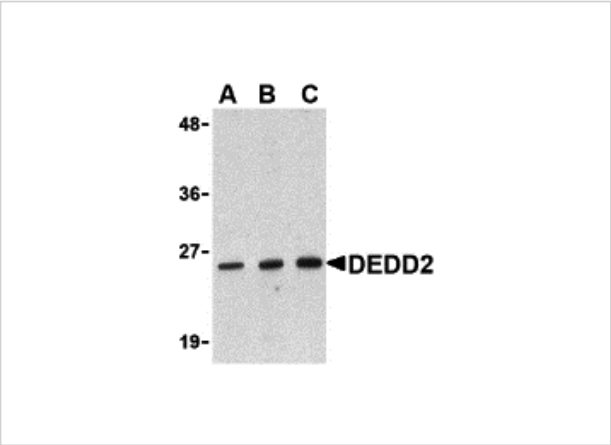
CATALOG NUMBER: 3071

Specifications

Host Species	Rabbit
Species Reactivity	Human, Mouse, Rat
Immunogen	DEDD2 antibody was raised against a peptide corresponding to 11 amino acids near the amino-terminus of human DEDD2. The immunogen is located within the first 50 amino acids of DEDD2.
Conjugate	Unconjugated
Tested Applications	ELISA, WB
User Note	Optimal dilutions for each application to be determined by the researcher.

Properties

Purification	DEDD2 Antibody is immunoaffinity chromatography purified IgG.
Clonality	Polyclonal
Isotype	IgG
Physical State	Liquid
Buffer	DEDD2 Antibody is supplied in PBS containing 0.02% sodium azide.
Concentration	1 mg/mL
Storage Conditions	DEDD2 antibody can be stored at 4°C for three months and -20°C, stable for up to one year. As with all antibodies care should be taken to avoid repeated freeze thaw cycles. Antibodies should not be exposed to prolonged high temperatures.



DEDD2 Antibody 1

Western blot analysis of DEDD2 in RAW264.7 cell lysate with DEDD2 antibody at (A) 0.5, (B) 1 and (C) 2 µg/mL.

Disclaimer

Disclaimer	Optimal dilutions/concentrations should be determined by the end user. The information provided is a guideline for product use. This product is for research use only.
------------	--

For research use only. For additional information, visit ProSci's [Terms and Conditions Page](#).