

## p53DINP1 Antibody

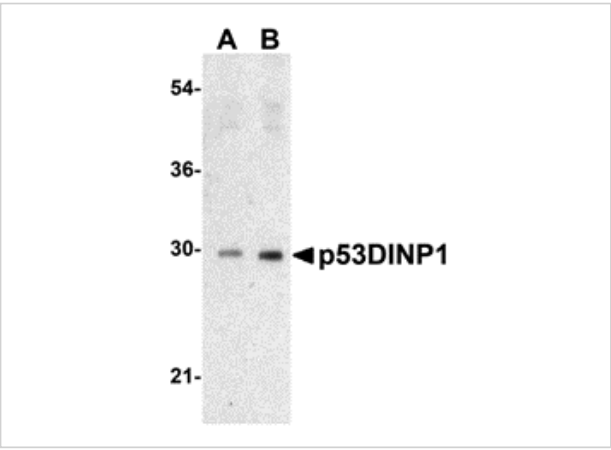
CATALOG NUMBER: 3045

### Specifications

|                            |   |
|----------------------------|---|
| Host Species               | Rabbit  |
| Species Reactivity         | Human, Mouse, Rat   |
| Immunogen                  | p53DINP1 antibody was raised with a synthetic peptide corresponding to 14 amino acids near the amino terminus of human p53DINP1.<br>The immunogen is located within the first 50 amino acids of p53DINP1. |
| Conjugate                  | Unconjugated  |
| Tested Applications        | ELISA, IF, IHC-P, WB  |
| User Note                  | Optimal dilutions for each application to be determined by the researcher.  |
| Specificity                | At least two isoforms of p53DINP1 are known to exist; this antibody will detect both isoforms.  |
| Predicted Molecular Weight | Predicted: 18, 27 kDa<br>Observed: 30 kDa   |

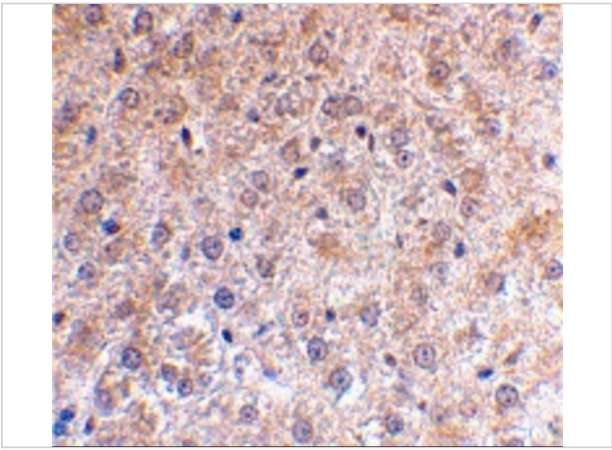
### Properties

|                    |  |
|--------------------|--|
| Purification       | p53DINP1 Antibody is affinity chromatography purified via peptide column.  |
| Clonality          | Polyclonal   |
| Isotype            | IgG  |
| Physical State     | Liquid   |
| Buffer             | p53DINP1 Antibody is supplied in PBS containing 0.02% sodium azide.  |
| Concentration      | 1 mg/mL  |
| Storage Conditions | p53DINP1 antibody can be stored at 4°C for three months and -20°C, stable for up to one year. As with all antibodies care should be taken to avoid repeated freeze thaw cycles. Antibodies should not be exposed to prolonged high temperatures. |



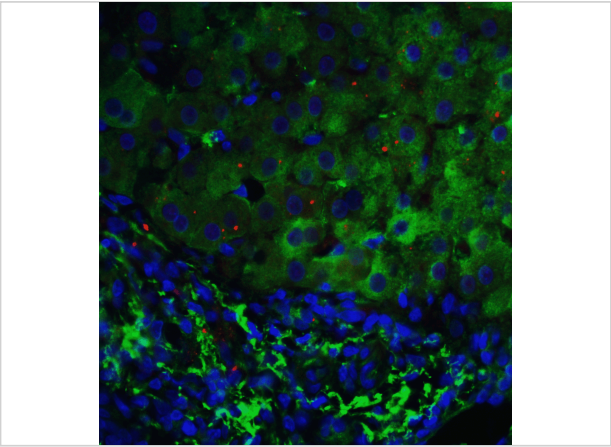
**p53DINP1 Antibody 1**

Western blot analysis of p53DINP1 expression in human lung tissue lysate with p53DINP1 antibody at (A) 0.5 and (B) 1 µg/mL.



**p53DINP1 Antibody 2**

Immunohistochemical staining of mouse liver using p53DINP1 antibody at 2 µg/mL.



**p53DINP1 Antibody 3**

Immunofluorescence of p53DINP1 in human liver tissue with p53DINP1 antibody at 5 µg/mL.

Green: p53DINP1 antibody (3045)  
Red: Phalloidin staining  
Blue: DAPI staining

**Disclaimer**

|                   |  |
|-------------------|--|
| <b>Disclaimer</b> | Optimal dilutions/concentrations should be determined by the end user. The information provided is a guideline for product use. This product is for research use only. |
|-------------------|--|

For research use only. For additional information, visit ProSci's [Terms and Conditions Page](#).