

PUMA Antibody

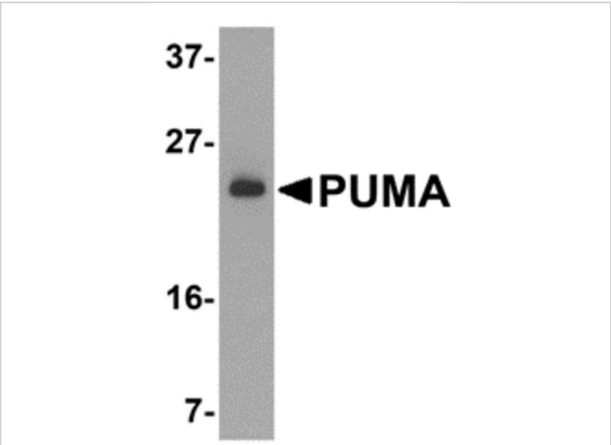
CATALOG NUMBER: 3043

Specifications

| | |
|----------------------------|--|
| Host Species | Rabbit |
| Species Reactivity | Human, Rat |
| Homology | Predicted species reactivity based on immunogen sequence: Mouse: (78.6%) |
| Immunogen | Anti-PUMA antibody (3043) was raised against a peptide corresponding to 14 amino acids near the amino terminus of human PUMA isoform 1. The immunogen is located within the first 50 amino acids of PUMA. |
| Conjugate | Unconjugated |
| Tested Applications | ELISA, IF, IHC-P, WB |
| User Note | Optimal dilutions for each application to be determined by the researcher. |
| Predicted Molecular Weight | Predicted: 21kD Observed: 23kD |

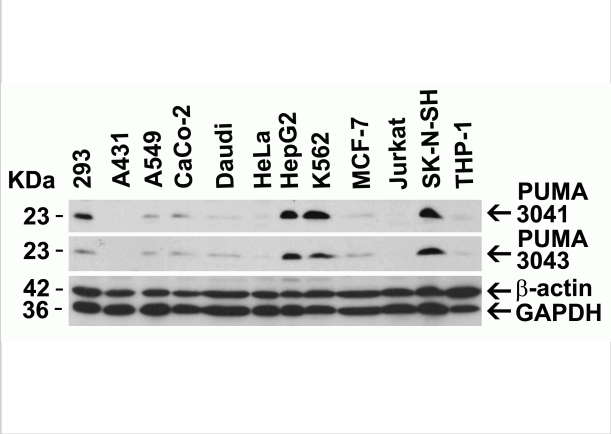
Properties

| | |
|--------------------|--|
| Purification | PUMA Antibody is affinity chromatography purified via peptide column. |
| Clonality | Polyclonal |
| Isotype | IgG |
| Physical State | Liquid |
| Buffer | PUMA Antibody is supplied in PBS containing 0.02% sodium azide. |
| Concentration | 1 mg/mL |
| Storage Conditions | PUMA antibody can be stored at 4°C for three months and -20°C, stable for up to one year. As with all antibodies care should be taken to avoid repeated freeze thaw cycles. Antibodies should not be exposed to prolonged high temperatures. |



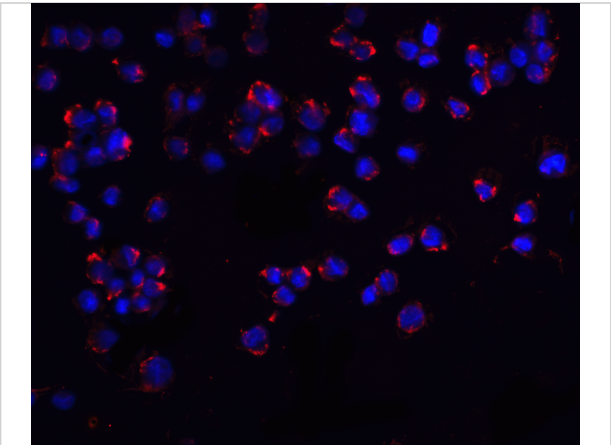
PUMA Antibody 1

Figure 1 Western Blot Validation of PUMA in K562 Cells
Loading: 15 µg of lysates per lane. Antibodies: 3043 (2 µg/mL), 1 h incubation at RT in 5% NFDm/TBST. Secondary: Goat anti-r...



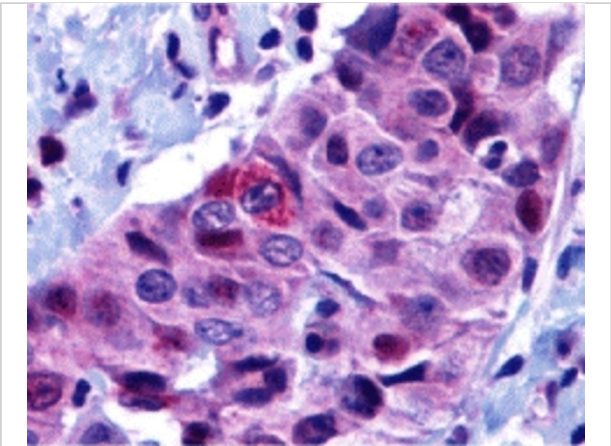
PUMA Antibody 2

Figure 2 Independent Antibody Validation (IAV) via Protein Expression Profile in Human Cells
Loading: 20 µg of lysates per lane. Antibodies: 3041 (3 µg/mL), 3043 (2 µg/mL), beta-...



PUMA Antibody 3

Figure 3 Immunofluorescence Validation of PUMA in K562 Cells
Immunofluorescent analysis of 4% paraformaldehyde-fixed K562 cells labeling PUMA with 3043 at 20 µg/mL, followed by...



PUMA Antibody 4

Figure 4 Immunohistochemistry Validation of PUMA in Human Breast Carcinoma
Immunohistochemical analysis of paraffin-embedded human breast carcinoma tissue using anti-PUMA ant...

Disclaimer

| | |
|------------|--|
| Disclaimer | Optimal dilutions/concentrations should be determined by the end user. The information provided is a guideline for product use. This product is for research use only. |
|------------|--|

For research use only. For additional information, visit ProSci's [Terms and Conditions Page](#).