

## Smac Antibody

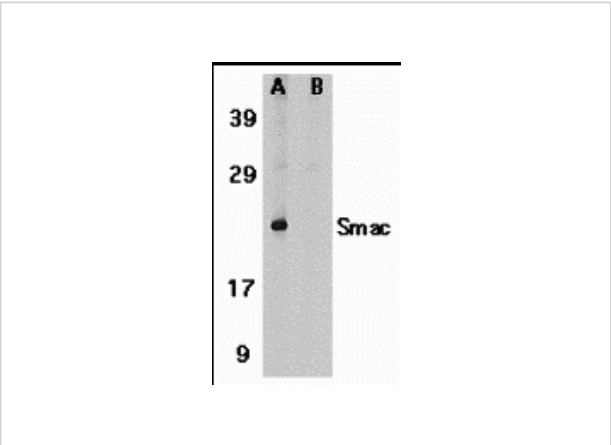
CATALOG NUMBER: 2409

### Specifications

Host Species	Rabbit
Species Reactivity	Human, Mouse, Rat
Immunogen	Anti-Smac antibody ( <b>2409</b> ) was raised against a peptide corresponding to 15 amino acids near the carboxy terminus of human Smac. The immunogen is located within the last 50 amino acids of Smac.
Conjugate	Unconjugated
Tested Applications	ELISA, IF, IHC-P, IP, WB
User Note	Optimal dilutions for each application to be determined by the researcher.
Predicted Molecular Weight	Predicted: 27kD Observed: 20 kD

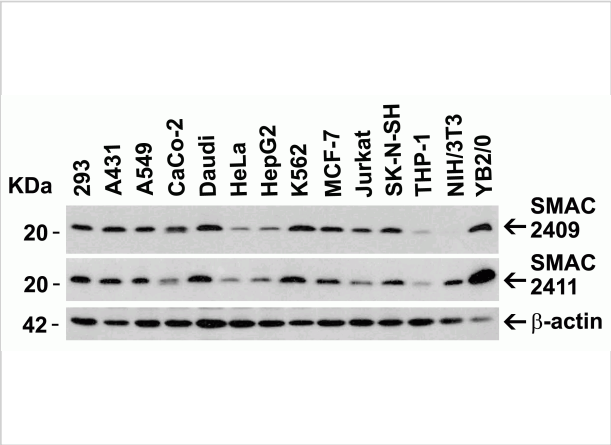
### Properties

Purification	Smac Antibody is affinity chromatography purified via peptide column.
Clonality	Polyclonal
Isotype	IgG
Physical State	Liquid
Buffer	Smac Antibody is supplied in PBS containing 0.02% sodium azide.
Concentration	1 mg/mL
Storage Conditions	Smac antibody can be stored at 4°C for three months and -20°C, stable for up to one year. As with all antibodies care should be taken to avoid repeated freeze thaw cycles. Antibodies should not be exposed to prolonged high temperatures.



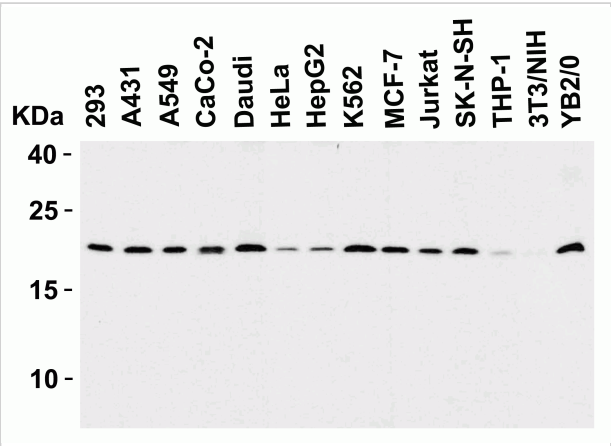
### Smac Antibody 1

**Figure 1 Western Blot Validation in Human Heart Tissue Lysate**  
 Loading: 15 µg of lysates per lane. Antibodies: Smac 2409 (1 µg/mL), 1h incubation at RT in 5% NFDm/TBST. Secondary:...



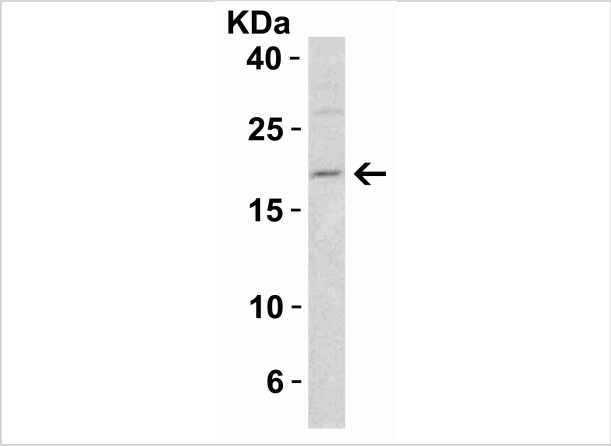
### Smac Antibody 2

**Figure 2 Independent Antibody Validation (IAV) via Protein Expression Profile in Cell Lines**  
 Loading: 15 µg of lysates per lane. Antibodies: Smac 2409 (1 µg/mL), Smac 2411 (1 µg/m...



### Smac Antibody 3

**Figure 3 Western Blot Validation in Human, Mouse and Rat Cell Lines**  
 Loading: 15 µg of lysates per lane. Antibodies: Smac 2409 (1 µg/mL), 1h incubation at RT in 5% NFM/TBST. Second...



### Smac Antibody 4

**Figure 4 Western Blot Validation in Mouse 3T3/NIH Cells**  
 Loading: 15 µg of lysate. Antibodies: Smac 2409 (1 µg/mL), 1h incubation at RT in 5% NFDm/TBST. Secondary: Goat anti-rabbit...

## Disclaimer

#### Disclaimer

Optimal dilutions/concentrations should be determined by the end user. The information provided is a guideline for product use. This product is for research use only.