

IKK gamma Antibody

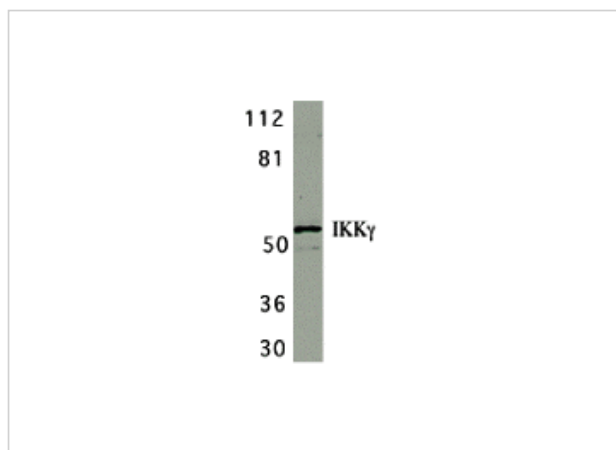
CATALOG NUMBER: 2335

Specifications

Host Species	Rabbit
Species Reactivity	Human, Mouse, Rat
Homology	Predicted species reactivity based on immunogen sequence: Bovine: (94%)
Immunogen	IKK gamma antibody was raised against a 17 amino acid peptide near the carboxy terminus of human IKK gamma. The immunogen is located within the last 50 amino acids of IKK gamma.
Conjugate	Unconjugated
Tested Applications	ELISA, ICC, IF, WB
User Note	Optimal dilutions for each application to be determined by the researcher.
Specificity	IKK gamma has no cross response to IKK alpha or IKK beta.
Predicted Molecular Weight	52 kDa

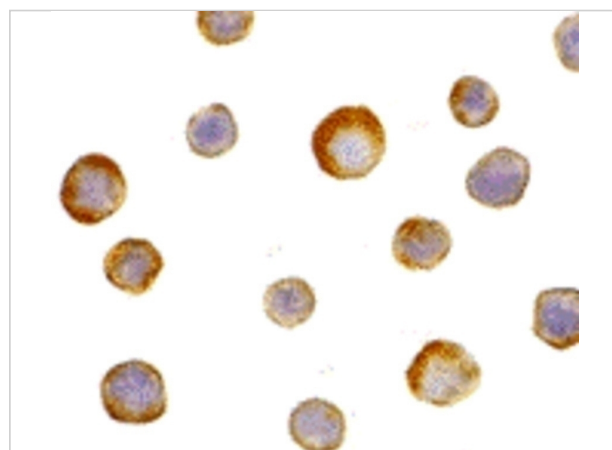
Properties

Purification	IKK gamma Antibody is affinity chromatography purified via peptide column.
Clonality	Polyclonal
Isotype	IgG
Physical State	Liquid
Buffer	IKK gamma Antibody is supplied in PBS containing 0.02% sodium azide.
Concentration	1 mg/ml
Storage Conditions	IKK gamma antibody can be stored at 4°C for three months and -20°C, stable for up to one year. As with all antibodies care should be taken to avoid repeated freeze thaw cycles. Antibodies should not be exposed to prolonged high temperatures.



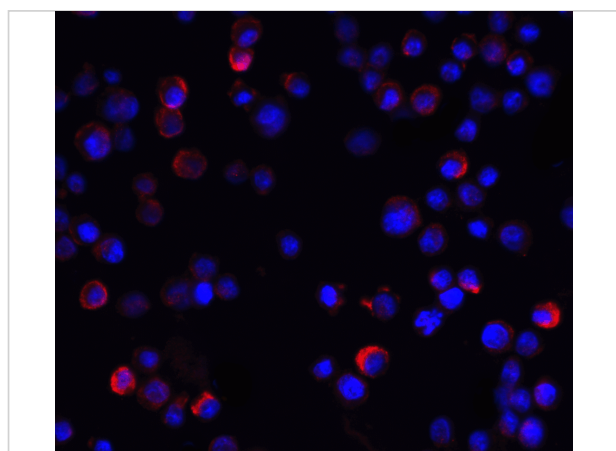
IKK gamma Antibody 1

Western blot analysis of IKK gamma in HeLa whole cell lysate with IKK gamma antibody at 1 µg/mL.



IKK gamma Antibody 2

Immunocytochemistry of IKK gamma in HeLa cells with IKK gamma antibody at 5 µg/mL.



IKK gamma Antibody 3

Immunofluorescence of IKK gamma in HeLa cells with IKK gamma antibody at 20 µg/mL.

Red: IKK gamma Antibody (2335)
Blue: DAPI staining

Disclaimer

Disclaimer

Optimal dilutions/concentrations should be determined by the end user. The information provided is a guideline for product use. This product is for research use only.

For research use only. For additional information, visit ProSci's [Terms and Conditions Page](#).