

BACE2 Antibody

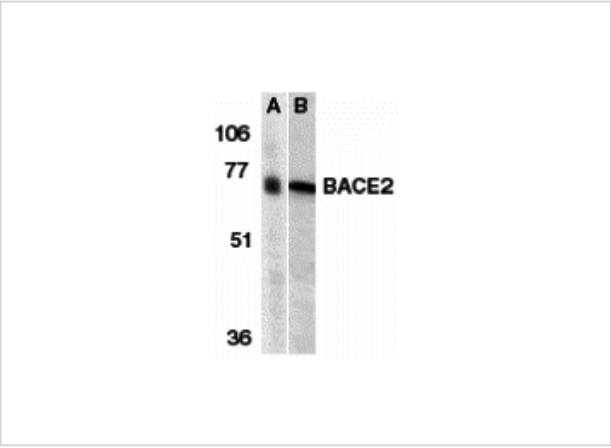
CATALOG NUMBER: 2247

Specifications

Host Species	Rabbit
Species Reactivity	Human, Mouse, Rat
Immunogen	BACE2 antibody was raised against a 16 amino acid peptide near the amino terminus of human BACE2. The immunogen is located within amino acids 30 - 80 of BACE2.
Conjugate	Unconjugated
Tested Applications	ELISA, IHC-P, WB
User Note	Optimal dilutions for each application to be determined by the researcher.
Predicted Molecular Weight	Predicted: 57 kDa Observed: 66 kDa

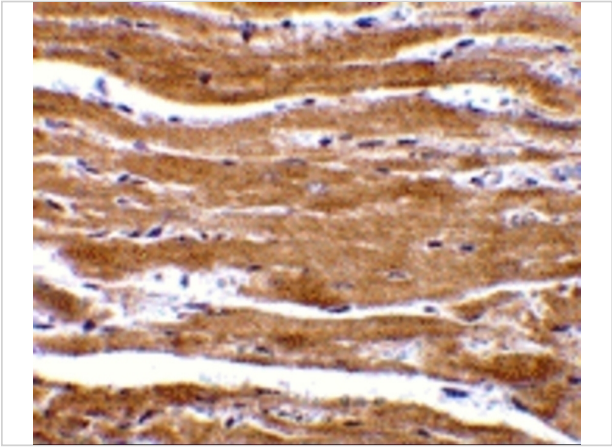
Properties

Purification	BACE2 Antibody is affinity chromatography purified via peptide column.
Clonality	Polyclonal
Isotype	IgG
Physical State	Liquid
Buffer	BACE2 Antibody is supplied in PBS containing 0.02% sodium azide.
Concentration	1 mg/mL
Storage Conditions	BACE2 antibody can be stored at 4°C for three months and -20°C, stable for up to one year. As with all antibodies care should be taken to avoid repeated freeze thaw cycles. Antibodies should not be exposed to prolonged high temperatures.



BACE2 Antibody 1

Western blot analysis of BACE2 in (A) human and (B) mouse heart tissue lysates with BACE2 antibody at 1 µg/mL.



BACE2 Antibody 2

Immunohistochemistry of BACE2 in mouse heart with BACE2 antibody at 10 µg/mL.

Disclaimer

Disclaimer	Optimal dilutions/concentrations should be determined by the end user. The information provided is a guideline for product use. This product is for research use only.
-------------------	--

For research use only. For additional information, visit ProSci's [Terms and Conditions Page](#).