

## F1A alpha Antibody

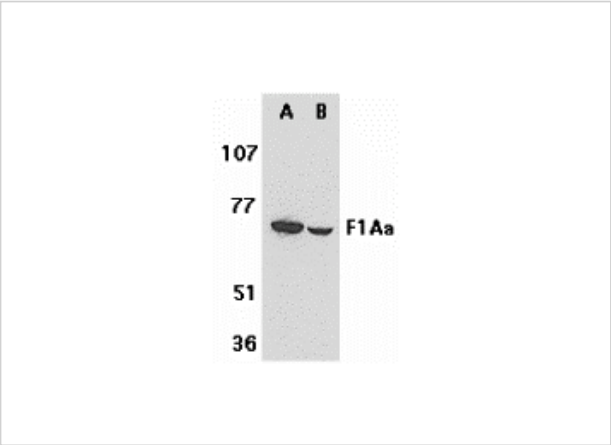
CATALOG NUMBER: 2279

### Specifications

Host Species	Rabbit
Species Reactivity	Human, Mouse, Rat
Homology	Predicted species reactivity based on immunogen sequence: Chicken: (79%)
Immunogen	F1A antibody was raised against a 14 amino acid peptide near the carboxy terminus of human F1A. The immunogen is located within the last 50 amino acids of F1A alpha.
Conjugate	Unconjugated
Tested Applications	ELISA, IF, IHC-P, WB
User Note	Optimal dilutions for each application to be determined by the researcher.
Predicted Molecular Weight	70 kDa

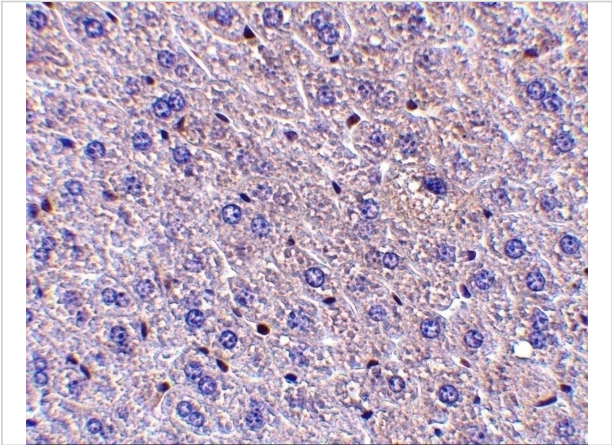
### Properties

Purification	F1A alpha Antibody is affinity chromatography purified via peptide column.
Clonality	Polyclonal
Isotype	IgG
Physical State	Liquid
Buffer	F1A alpha Antibody is supplied in PBS containing 0.02% sodium azide.
Concentration	1 mg/ml
Storage Conditions	F1A alpha antibody can be stored at 4°C for three months and -20°C, stable for up to one year. As with all antibodies care should be taken to avoid repeated freeze thaw cycles. Antibodies should not be exposed to prolonged high temperatures.



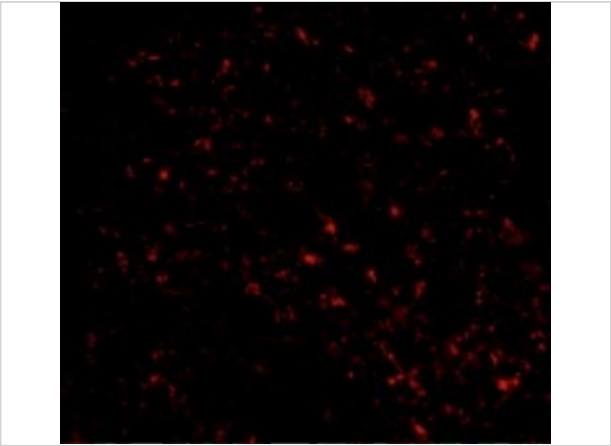
F1A alpha Antibody 1

Western blot analysis of F1A alpha in mouse (A) and rat (B) liver tissue lysates with F1A alpha antibody at 1 µg/mL.



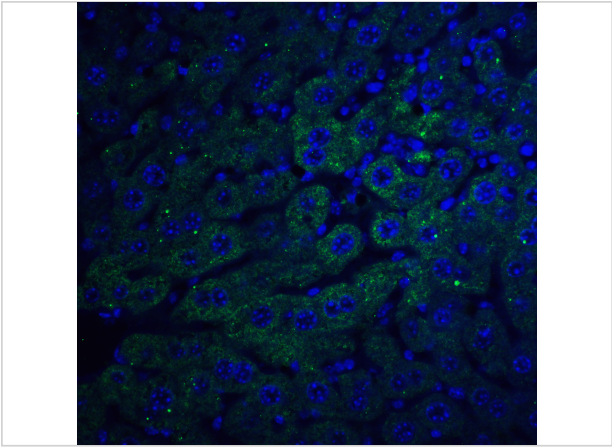
F1A alpha Antibody 2

Immunohistochemistry of F1Aa in mouse liver tissue with F1Aa antibody at 5 µg/mL.



F1A alpha Antibody 3

Immunofluorescence of F1A alpha in Mouse Liver cells with F1A alpha antibody at 20 µg/mL.



F1A alpha Antibody 4

Immunofluorescence of F1A alpha in mouse liver tissue with F1A alpha antibody at 20 µg/mL.

Green: F1A alpha Antibody (2279)  
Blue: DAPI staining

Disclaimer

Disclaimer	Optimal dilutions/concentrations should be determined by the end user. The information provided is a guideline for product use. This product is for research use only.
------------	--

For research use only. For additional information, visit ProSci's [Terms and Conditions Page](#).