

MYD88 Antibody

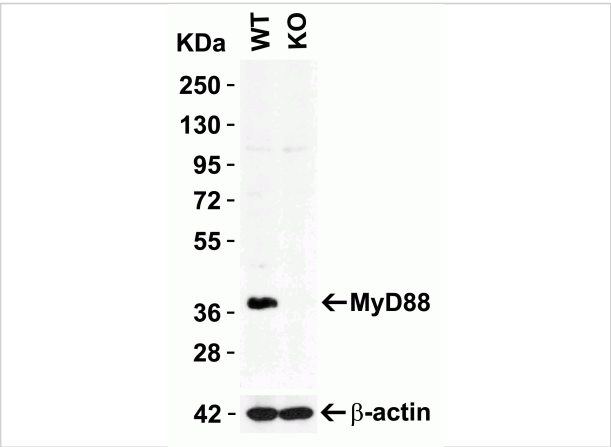
CATALOG NUMBER: 2127

Specifications

Host Species	Rabbit
Species Reactivity	Human, Mouse, Rat
Homology	Predicted species reactivity based on immunogen sequence: Pig: (94%), Sheep: (82%), Bovine: (82%), Chicken: (82%)
Immunogen	Anti-MYD88 antibody (2127) was raised against a peptide corresponding to 17 amino acids near carboxy terminus of human MYD88 isoform 1. The immunogen is located within the last 50 amino acids of MYD88.
Conjugate	Unconjugated
Tested Applications	ELISA, IF, IP, WB
User Note	Optimal dilutions for each application to be determined by the researcher.
Predicted Molecular Weight	Predicted: 35kD Observed: 35kD

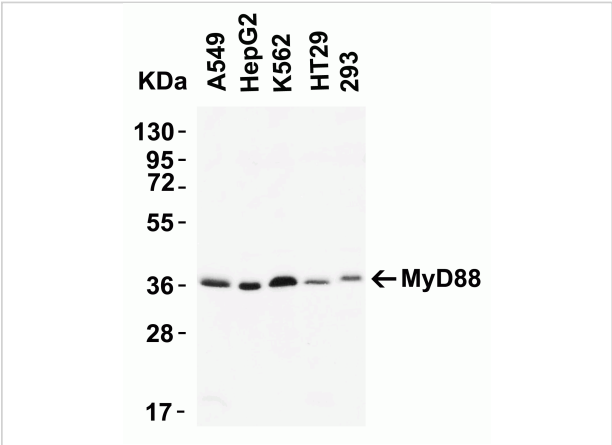
Properties

Purification	MYD88 Antibody is affinity chromatography purified via peptide column.
Clonality	Polyclonal
Isotype	IgG
Physical State	Liquid
Buffer	MYD88 Antibody is supplied in PBS containing 0.02% sodium azide.
Concentration	1 mg/mL
Storage Conditions	MYD88 antibody can be stored at 4°C for three months and -20°C, stable for up to one year. As with all antibodies care should be taken to avoid repeated freeze thaw cycles. Antibodies should not be exposed to prolonged high temperatures.



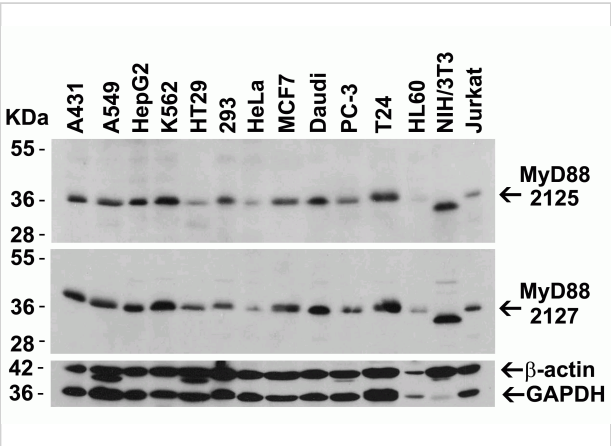
MYD88 Antibody 1

Figure 1 KO Validation in HeLa Cells
 Loading: 10 μ g of HeLa WT cell lysate or MyD88 KO cell lysate.
 Antibodies: MyD88 2127 (2 μ g/mL) and beta-actin 3779 (1 μ g/mL),
 1 h incubat...



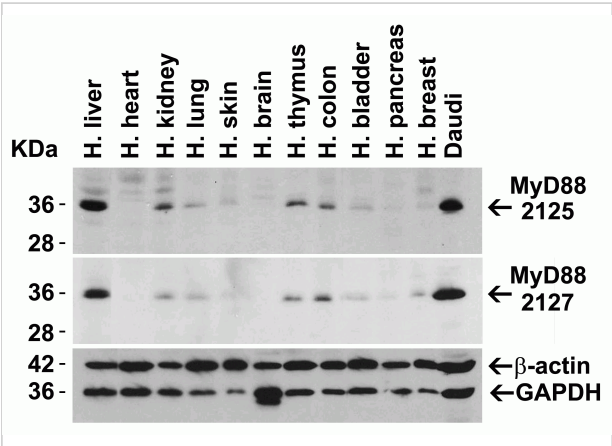
MYD88 Antibody 2

Figure 2 Western Blot Validation of MyD88 in human cell lines
 Loading: 15 μ g of lysates per lane. Antibodies: 2127 (2 μ g/mL) 1 h
 incubation at RT in 5% NFDm/TBST. Secondary: Goat ...



MYD88 Antibody 3

Figure 3 Independent Antibody Validation (IAV) via Protein Expression Profile in Cell Lines
 Loading: 15 μ g of lysates per lane. Antibodies: MyD88 2125 (2
 μ g/mL), MyD88 2127 (2 μ g...



MYD88 Antibody 4

Figure 4 Independent Antibody Validation (IAV) via Protein Expression Profile in Human Tissues
 Loading: 15 μ g of lysates per lane. Antibodies: MyD88 2125 (2
 μ g/mL), MyD88 2127 (2...

Disclaimer

Disclaimer	Optimal dilutions/concentrations should be determined by the end user. The information provided is a guideline for product use. This product is for research use only.
-------------------	--

For research use only. For additional information, visit ProSci's [Terms and Conditions Page](#).