

CIDE-A Antibody

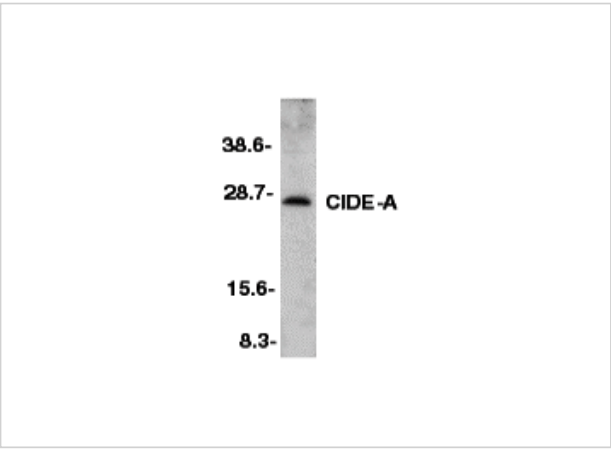
CATALOG NUMBER: 2089

Specifications

Host Species	Rabbit
Species Reactivity	Human, Mouse
Immunogen	CIDE-A antibody was raised against an 18 amino acid peptide near the carboxy terminus of mouse CIDE-A. The immunogen is located within the last 50 amino acids of CIDE-A.
Conjugate	Unconjugated
Tested Applications	ELISA, IF, IHC-P, WB
User Note	Optimal dilutions for each application to be determined by the researcher.
Specificity	It has no cross activity to CIDE-B.
Predicted Molecular Weight	25 kDa

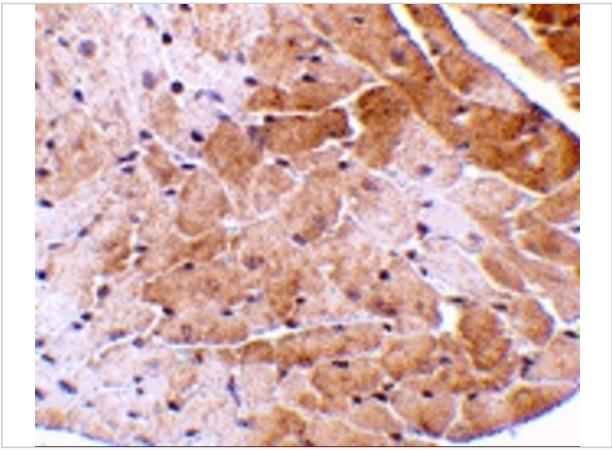
Properties

Purification	CIDE-A Antibody is affinity chromatography purified via peptide column.
Clonality	Polyclonal
Isotype	IgG
Physical State	Liquid
Buffer	CIDE-A Antibody is supplied in PBS containing 0.02% sodium azide.
Concentration	1 mg/mL
Storage Conditions	CIDE-A antibody can be stored at 4°C up to one year. Antibodies should not be exposed to prolonged high temperatures.



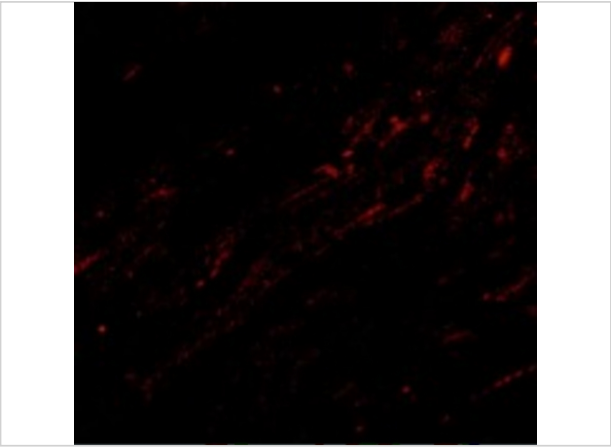
CIDE-A Antibody 1

Western blot analysis of CIDE-A in mouse heart tissue lysate with CIDE-A antibody at 1:500 dilution.



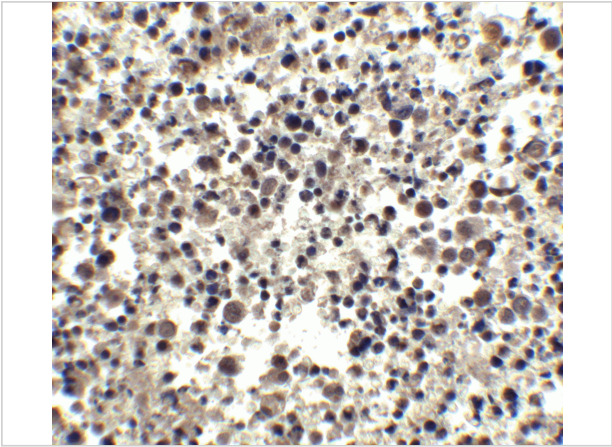
CIDE-A Antibody 2

Immunohistochemistry of CIDE-A in mouse heart tissue with CIDE-A antibody at 5 µg/mL.



CIDE-A Antibody 3

Immunofluorescence of CIDE-A in Mouse Heart cells with CIDE-A antibody at 20 ug/mL.



CIDE-A Antibody 4

Immunohistochemistry of CIDE-A in human brain tissue with CIDE-A antibody at 2.5 µg/mL.

Disclaimer

Disclaimer	Optimal dilutions/concentrations should be determined by the end user. The information provided is a guideline for product use. This product is for research use only.
------------	--

For research use only. For additional information, visit ProSci's [Terms and Conditions Page](#).