

Bim Antibody

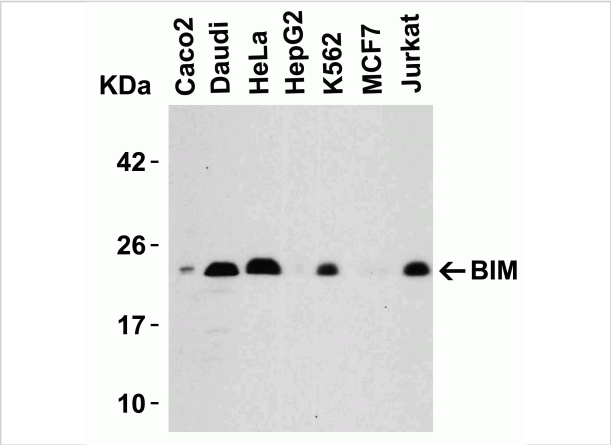
CATALOG NUMBER: 2065

Specifications

Host Species	Rabbit
Species Reactivity	Human, Mouse, Rat
Immunogen	Anti-BIM antibody (2065) was raised against a peptide corresponding to 20 amino acids near the amino terminus of human BIM. The immunogen is located within the first 50 amino acids of BIM.
Conjugate	Unconjugated
Tested Applications	ELISA, IF, IHC-P, WB
User Note	Optimal dilutions for each application to be determined by the researcher.
Predicted Molecular Weight	Predicted: 22kD Observed: 22kD

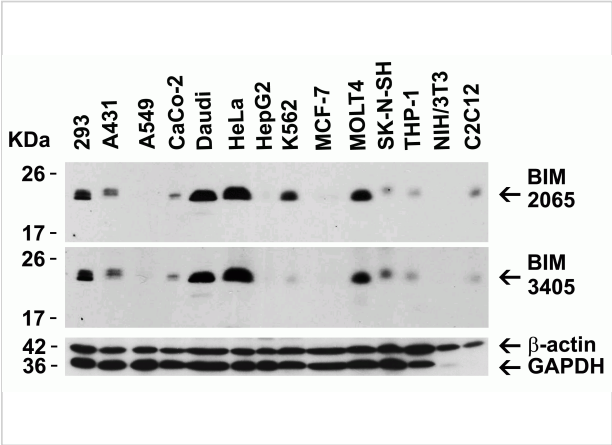
Properties

Purification	Bim Antibody is affinity chromatography purified via peptide column.
Clonality	Polyclonal
Isotype	IgG
Physical State	Liquid
Buffer	Bim Antibody is supplied in PBS containing 0.02% sodium azide.
Concentration	1 mg/ml
Storage Conditions	Bim antibody can be stored at 4°C for three months and -20°C, stable for up to one year. As with all antibodies care should be taken to avoid repeated freeze thaw cycles. Antibodies should not be exposed to prolonged high temperatures.



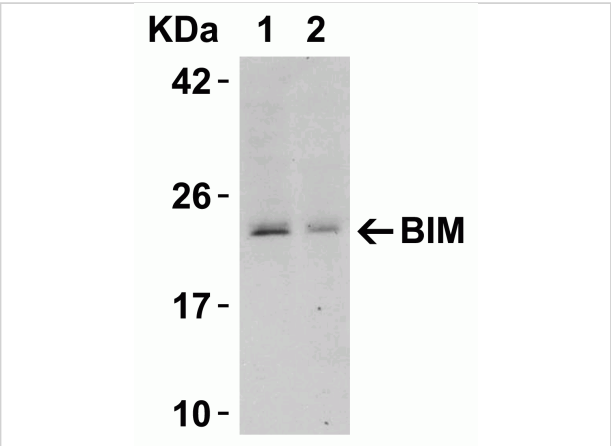
Bim Antibody 1

Figure 1 Western Blot Validation in Human Cell Lines
Loading: 15 µg of lysates per lane. Antibodies: Bim 2065, (0.5 µg/mL), 1h incubation at RT in 5% NFDm/TBST. Secondary: Goat an...



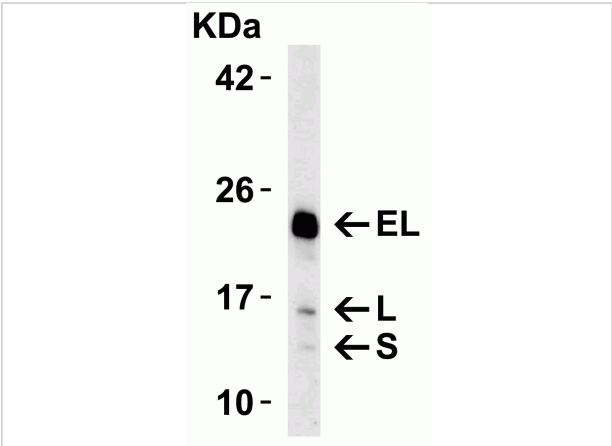
Bim Antibody 2

Figure 2 Independent Antibody Validation (IAV) via Protein Expression Profile in Cell Lines
Loading: 15 µg of lysates per lane. Antibodies: Bim 2065, (0.5 µg/mL), Bim 3405, (5 µg...



Bim Antibody 3

Figure 3 Western Blot Validation in Human Tissue
Loading: 15 µg of lysates per lane. Antibodies: Bim 2065, (0.5 µg/mL), 1h incubation at RT in 5% NFDm/TBST. Secondary: Goat anti-r...



Bim Antibody 4

Figure 4 Western Blot Validation in HeLa Cells
Loading: 15 µg of lysate per lane. Antibodies: Bim 2065, (0.5 µg/mL), 1h incubation at RT in 5% NFDm/TBST. Secondary: Goat anti-rabb...

Disclaimer

Disclaimer	Optimal dilutions/concentrations should be determined by the end user. The information provided is a guideline for product use. This product is for research use only.
------------	--

For research use only. For additional information, visit ProSci's [Terms and Conditions Page](#).