

Survivin Antibody

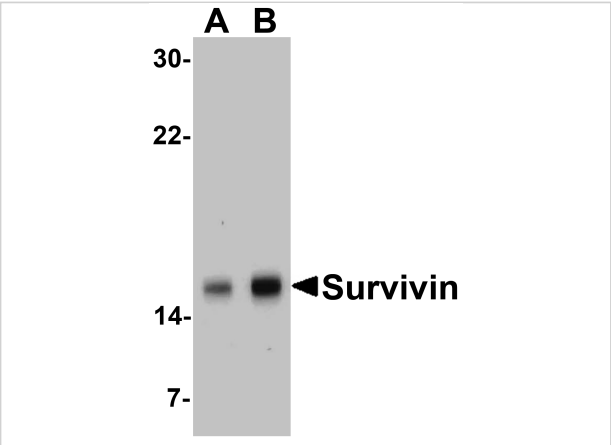
CATALOG NUMBER: 2233

Specifications

Host Species	Rabbit
Species Reactivity	Human, Mouse
Homology	Predicted species reactivity based on immunogen sequence: Pig: (82%), Bovine: (82%), Rat: (58%)
Immunogen	Anti-Survivin antibody (2233) was raised against a peptide corresponding to 12 amino acids near the amino terminus of human Survivin. The immunogen is located within the first 50 amino acids of Survivin.
Conjugate	Unconjugated
Tested Applications	ELISA, ICC, IF, IHC-P, WB
User Note	Optimal dilutions for each application to be determined by the researcher.
Predicted Molecular Weight	Predicted: 17kD Observed: 17 kD

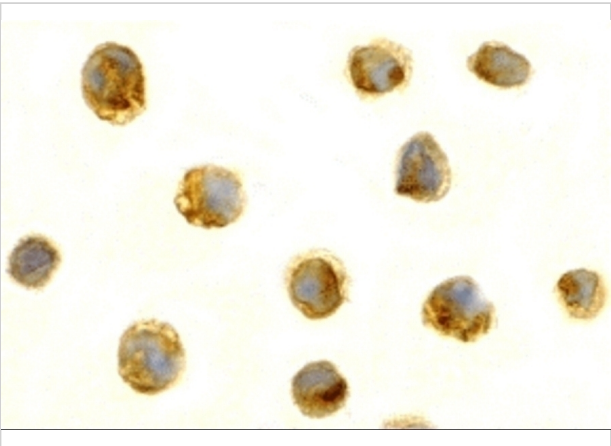
Properties

Purification	Survivin Antibody is affinity chromatography purified via peptide column.
Clonality	Polyclonal
Isotype	IgG
Physical State	Liquid
Buffer	Survivin Antibody is supplied in PBS containing 0.02% sodium azide.
Concentration	1 mg/mL
Storage Conditions	Survivin antibody can be stored at 4°C for three months and -20°C, stable for up to one year. As with all antibodies care should be taken to avoid repeated freeze thaw cycles. Antibodies should not be exposed to prolonged high temperatures.



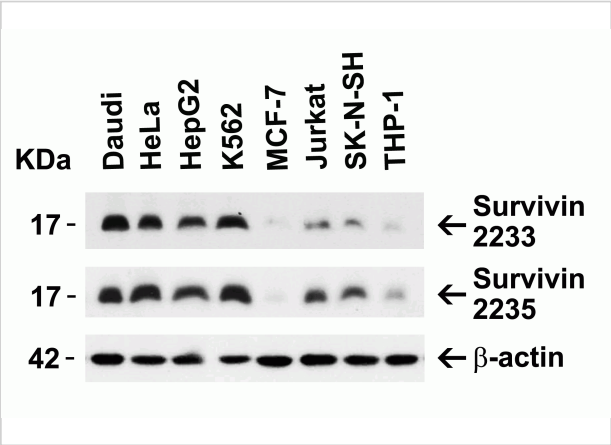
Survivin Antibody 1

Figure 1 Western Blot Validation in Human MOLT4 Cell Lysate
 Loading: 15 µg of lysates per lane. Antibodies: Survivin 2233 (A: 1 µg/mL and B: 2 µg/mL), 1h incubation at RT in 5% N...



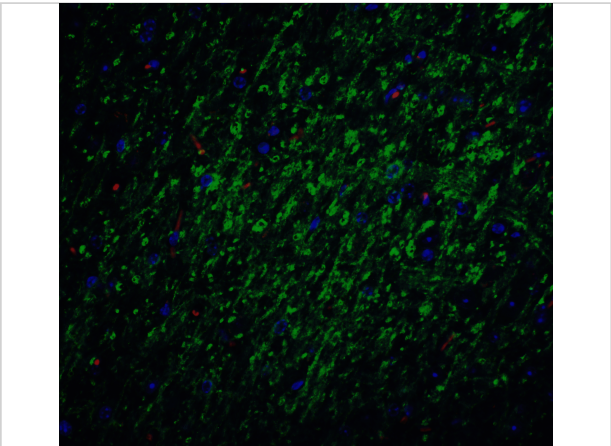
Survivin Antibody 3

Figure 3 Immunocytochemistry Validation of Survivin in Jurkat Cells
 Immunocytochemical analysis of Jurkat cells using anti-Survivin antibody (2233) at 5 µg/mL. Cells was fixed w...



Survivin Antibody 2

Figure 2 Independent Antibody Validation (IAV) via Protein Expression Profile in Human Cell Lines
 Loading: 15 µg of lysates per lane. Antibodies: Survivin 2233 (5 µg/mL), Survivi...



Survivin Antibody 4

Figure 3 Immunocytochemistry Validation of Survivin in Jurkat Cells
 Immunocytochemical analysis of Jurkat cells using anti-Survivin antibody (2233) at 5 µg/mL. Cells was fixed w...

Disclaimer

Disclaimer	Optimal dilutions/concentrations should be determined by the end user. The information provided is a guideline for product use. This product is for research use only.
-------------------	--

For research use only. For additional information, visit ProSci's [Terms and Conditions Page](#).