



ProSci Incorporated
12170 Flint Place
Poway, CA 92064, USA
prosci-inc.com

P: +1 (888) 513-9525
Local: +1 (858) 513-2638
Fax: +1 (858) 513-2692

customercare@prosci-inc.com
techsupport@prosci-inc.com

Bonzo Antibody

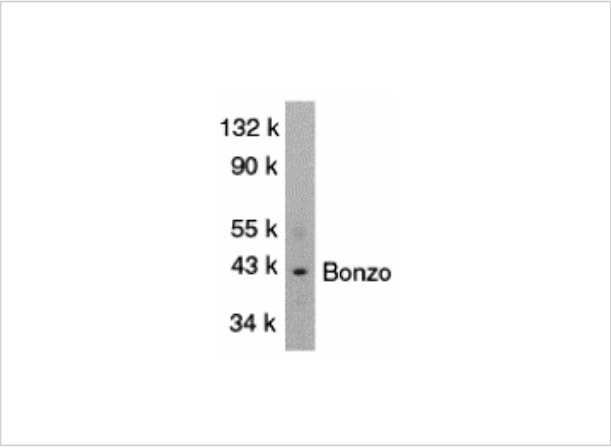
CATALOG NUMBER: 1170

Specifications

| | |
|---------------------|--|
| Host Species | Rabbit |
| Species Reactivity | Human |
| Homology | Predicted species reactivity based on immunogen sequence: Mouse: (85%) |
| Immunogen | Bonzo antibody was raised against a 20 amino acid peptide near the carboxy terminus of human Bonzo. The immunogen is located within the last 50 amino acids of Bonzo. |
| Conjugate | Unconjugated |
| Tested Applications | ELISA, WB |
| User Note | Optimal dilutions for each application to be determined by the researcher. |

Properties

| | |
|--------------------|---|
| Purification | Bonzo Antibody is Antibody is DEAE purified. |
| Clonality | Polyclonal |
| Isotype | IgG |
| Physical State | Liquid |
| Buffer | Bonzo Antibody is supplied in PBS containing 0.02% sodium azide. |
| Concentration | 1 mg/ml |
| Storage Conditions | Bonzo antibody can be stored at 4°C for three months and -20°C, stable for up to one year. As with all antibodies care should be taken to avoid repeated freeze thaw cycles. Antibodies should not be exposed to prolonged high temperatures. |



Bonzo Antibody 1

Loading: 15 µg of cell lysates per lane.

Disclaimer

| | |
|------------|--|
| Disclaimer | Optimal dilutions/concentrations should be determined by the end user. The information provided is a guideline for product use. This product is for research use only. |
|------------|--|

For research use only. For additional information, visit ProSci's [Terms and Conditions Page](#).