

## ASK1 Antibody

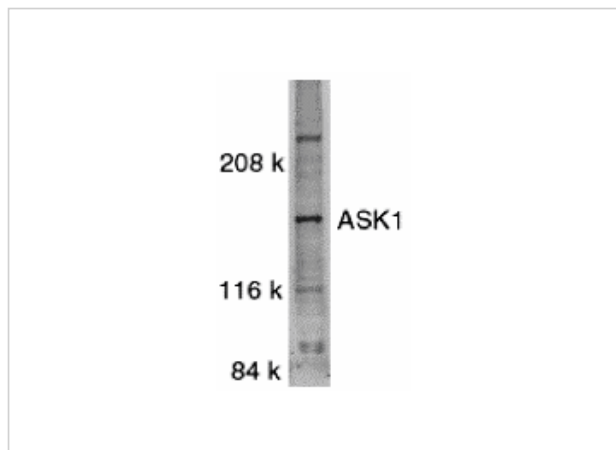
CATALOG NUMBER: 1151

### Specifications

Host Species	Rabbit
Species Reactivity	Human
Homology	Predicted species reactivity based on immunogen sequence: Mouse: (100%)
Immunogen	ASK1 antibody was raised against a peptide corresponding to amino acids near the carboxy terminus of human ASK1. The sequence is different from that of mouse by last two amino acids. The immunogen is located within the last 50 amino acids of ASK1.
Conjugate	Unconjugated
Tested Applications	ELISA, ICC, IF, WB
User Note	Optimal dilutions for each application to be determined by the researcher.
Predicted Molecular Weight	155 kDa

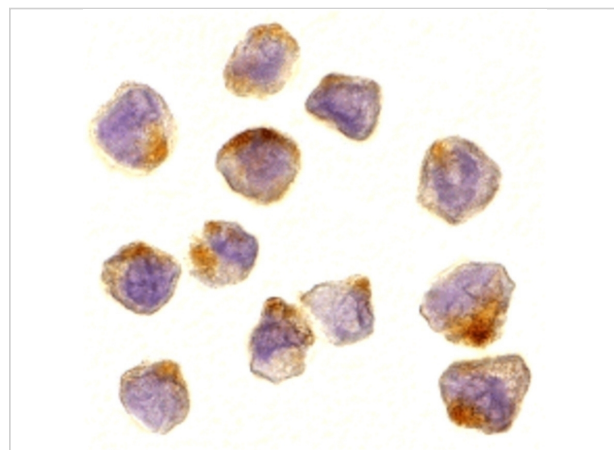
### Properties

Purification	ASK1 Antibody is affinity chromatography purified via peptide column.
Clonality	Polyclonal
Isotype	IgG
Physical State	Liquid
Buffer	ASK1 Antibody is supplied in PBS containing 0.02% sodium azide.
Concentration	1 mg/ml
Storage Conditions	ASK1 antibody can be stored at 4°C for three months and -20°C, stable for up to one year. As with all antibodies care should be taken to avoid repeated freeze thaw cycles. Antibodies should not be exposed to prolonged high temperatures.



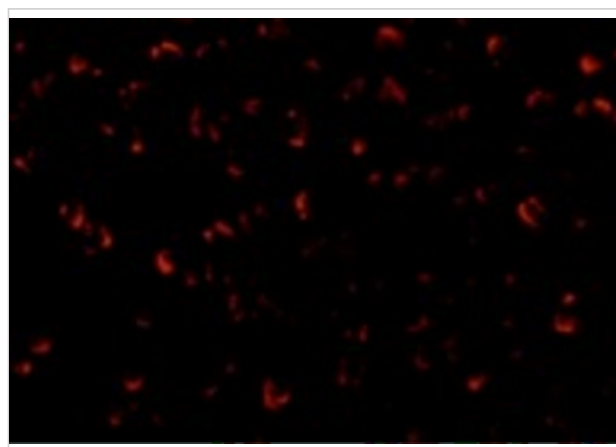
### ASK1 Antibody 1

Western blot analysis of ASK1 in SW1353 whole cell lysate with ASK1 antibody at 1:500 dilution.



### ASK1 Antibody 2

Immunocytochemistry of ASK1 in A431 cells with ASK1 antibody at 10 µg/mL.



### ASK1 Antibody 3

Immunofluorescence of ASK1 in A431 cells with ASK1 antibody at 20 µg/mL.

## Disclaimer

#### Disclaimer

Optimal dilutions/concentrations should be determined by the end user. The information provided is a guideline for product use. This product is for research use only.

For research use only. For additional information, visit ProSci's [Terms and Conditions Page](#).