

CCR3 Antibody

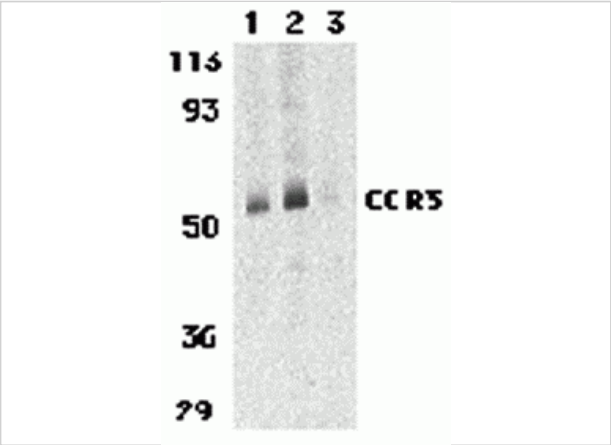
CATALOG NUMBER: 1105

Specifications

Host Species	Rabbit
Species Reactivity	Human, Mouse, Rat
Immunogen	CCR3 antibody was raised against a 14 amino acid synthetic peptide from near the carboxy terminus of human CCR3. The immunogen is located within the last 50 amino acids of CCR3.
Conjugate	Unconjugated
Tested Applications	ELISA, IF, IHC-P, WB
User Note	Optimal dilutions for each application to be determined by the researcher.
Specificity	At least three isoforms of CCR3 are known to exist; this antibody will detect all three isoforms.
Predicted Molecular Weight	Predicted: 39, 41 kDa Observed: 52 kDa

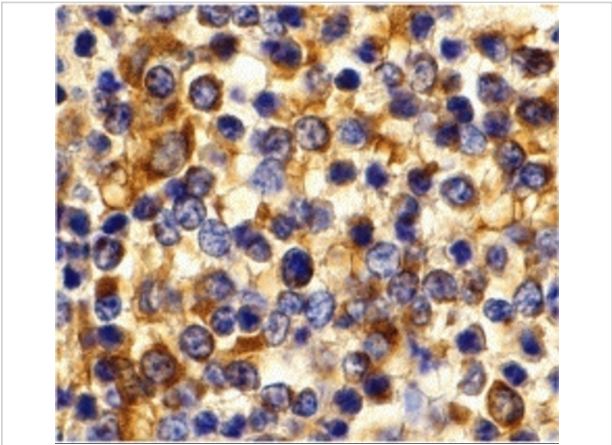
Properties

Purification	CCR3 Antibody is affinity chromatography purified via peptide column.
Clonality	Polyclonal
Isotype	IgG
Physical State	Liquid
Buffer	CCR3 Antibody is supplied in PBS containing 0.02% sodium azide.
Concentration	1 mg/mL
Storage Conditions	CCR3 antibody can be stored at 4°C up to one year. Antibodies should not be exposed to prolonged high temperatures.



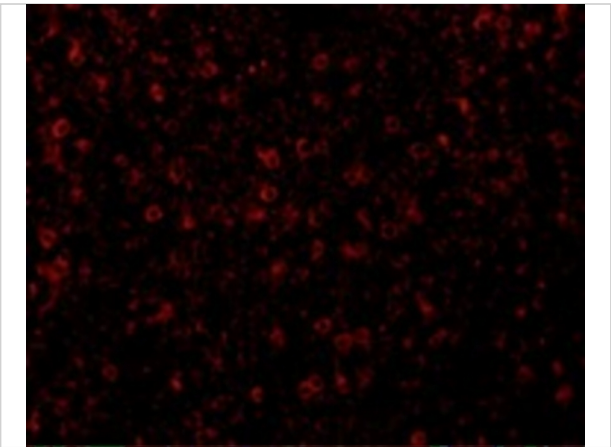
CCR3 Antibody 1

Western blot analysis of CCR3 in human spleen tissue lysates with CCR3 antibody at 1 (lane 1) and 2 µg/mL (lane 2), and 2 µg/mL in the presence of blocking peptide (lane 3).



CCR3 Antibody 2

Immunohistochemistry of CCR3 in human spleen tissue with CCR3 antibody at 10 µg/mL.



CCR3 Antibody 3

Immunofluorescence of CCR3 in Human Spleen tissue with CCR3 antibody at 20 µg/mL.

Disclaimer

Disclaimer	Optimal dilutions/concentrations should be determined by the end user. The information provided is a guideline for product use. This product is for research use only.
------------	--

For research use only. For additional information, visit ProSci's [Terms and Conditions Page](#).