

GPR15 Antibody

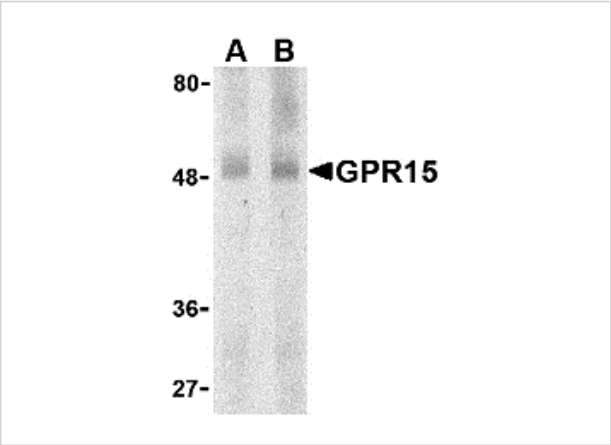
CATALOG NUMBER: 2101

Specifications

Host Species	Rabbit
Species Reactivity	Human, Mouse, Rat
Immunogen	GPR15 antibody was raised against a peptide corresponding to 16 amino acids near the amino terminus of human GPR15. The immunogen is located within the first 50 amino acids of GPR15.
Conjugate	Unconjugated
Tested Applications	ELISA, ICC, WB
User Note	Optimal dilutions for each application to be determined by the researcher.
Predicted Molecular Weight	Predicted: 40 kDa Observed: 49 kDa

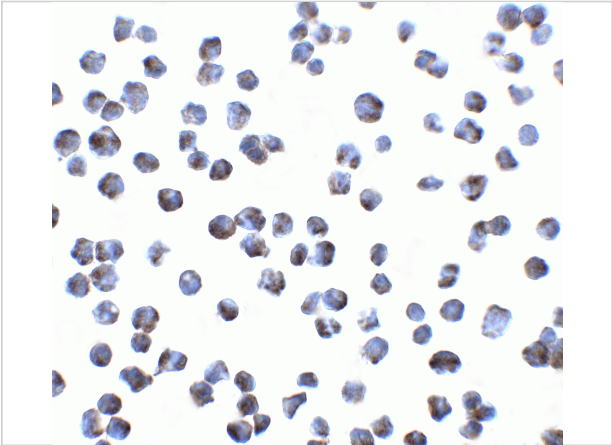
Properties

Purification	GPR15 Antibody is affinity chromatography purified via peptide column.
Clonality	Polyclonal
Isotype	IgG
Physical State	Liquid
Buffer	GPR15 Antibody is supplied in PBS containing 0.02% sodium azide.
Concentration	1 mg/mL
Storage Conditions	GPR15 antibody can be stored at 4°C for three months and -20°C, stable for up to one year. As with all antibodies care should be taken to avoid repeated freeze thaw cycles. Antibodies should not be exposed to prolonged high temperatures.



GPR15 Antibody 1

Western blot analysis of GPR15 in human spleen lysate with GPR15 antibody at (A) 0.5 and (B) 1 $\mu\text{g/mL}$.



GPR15 Antibody 2

Immunocytochemistry of GPR15 in A431 cells with GPR15 antibody at 5 $\mu\text{g/mL}$.

Disclaimer

Disclaimer	Optimal dilutions/concentrations should be determined by the end user. The information provided is a guideline for product use. This product is for research use only.
------------	--

For research use only. For additional information, visit ProSci's [Terms and Conditions Page](#).