

## TMEM41B (NT) Antibody

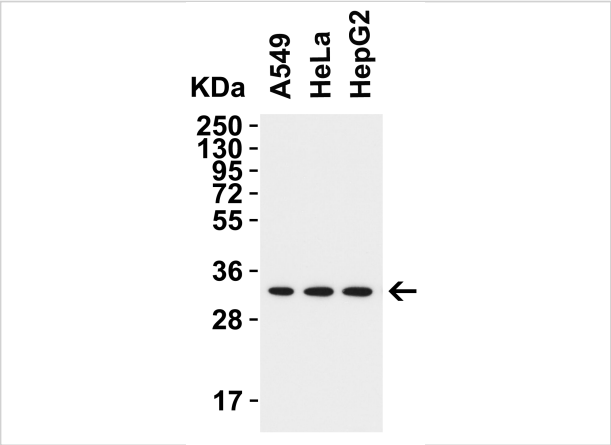
CATALOG NUMBER: 9567

### Specifications

Host Species	Rabbit
Species Reactivity	Human, Mouse, Rat
Homology	Predicted species reactivity based on immunogen sequence: Horse (100%); Chimpanzee (100%).
Immunogen	Anti-TMEM41B antibody ( <b>9567</b> ) was raised against a peptide corresponding to 11 amino acids near the amino terminus of human TMEM41B. The immunogen is located within the first 50 amino acids of TMEM41B.
Conjugate	Unconjugated
Tested Applications	ELISA, IF, WB
User Note	Optimal dilutions for each application to be determined by the researcher.
Predicted Molecular Weight	Predicted: 33kD Observed: 33 kD

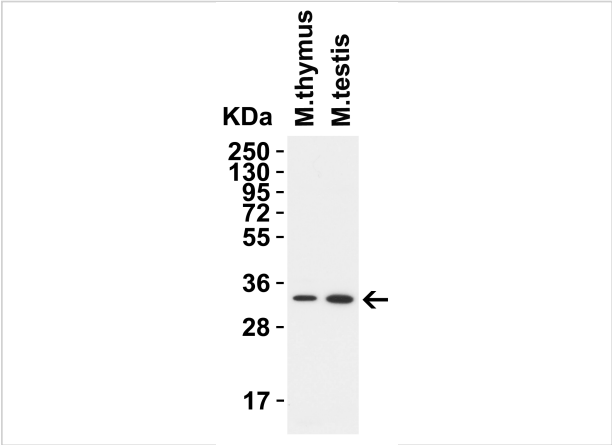
### Properties

Purification	TMEM41B Antibody is affinity chromatography purified via peptide column.
Clonality	Polyclonal
Isotype	IgG
Physical State	Liquid
Buffer	TMEM41B Antibody is supplied in PBS containing 0.02% sodium azide.
Concentration	1 mg/mL
Storage Conditions	TMEM41B antibody can be stored at 4°C for three months and -20°C, stable for up to one year. As with all antibodies care should be taken to avoid repeated freeze thaw cycles. Antibodies should not be exposed to prolonged high temperatures.



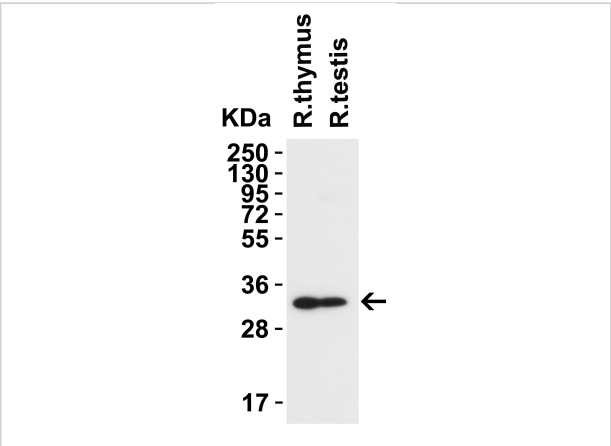
### TMEM41B (NT) Antibody 1

**Figure 1 WB Validation in Human Cell Lines**  
 Loading: 15 µg of lysate Antibodies: TMEM41B 9567, 2 µg/mL, 1 h incubation at RT in 5% NFDm/TBST. Secondary: Goat Anti-Rabbit IgG ...



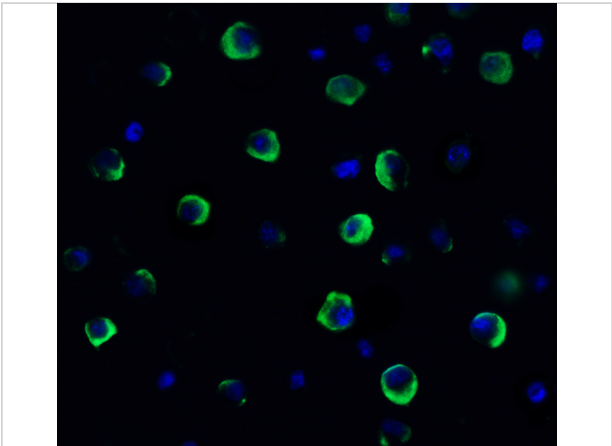
### TMEM41B (NT) Antibody 2

**Figure 2 Western Blot Validation in Mouse Tissues**  
 Loading: 15 µg of lysates per lane. Antibodies: TMEM41B 9567, 2 µg/mL, 1 h incubation at RT in 5% NFDm/TBST. Secondary: Goat anti...



### TMEM41B (NT) Antibody 3

**Figure 3 Western Blot Validation in Rat Tissues**  
 Loading: 15 µg of lysates per lane. Antibodies: TMEM41B 9567, 2 µg/mL, 1 h incubation at RT in 5% NFDm/TBST. Secondary: Goat anti-r...



### TMEM41B (NT) Antibody 4

**Figure 4 Immunofluorescence Validation of TMEM41B in HeLa Cells**  
 Immunofluorescent analysis of 4% paraformaldehyde-fixed HeLa cells labeling TMEM41B with 9567 at 20 µg/mL, follo...

## Disclaimer

Disclaimer	Optimal dilutions/concentrations should be determined by the end user. The information provided is a guideline for product use. This product is for research use only.
------------	------------------------------------------------------------------------------------------------------------------------------------------------------------------------

For research use only. For additional information, visit ProSci's [Terms and Conditions Page](#).