

FZD6 (IN) Antibody

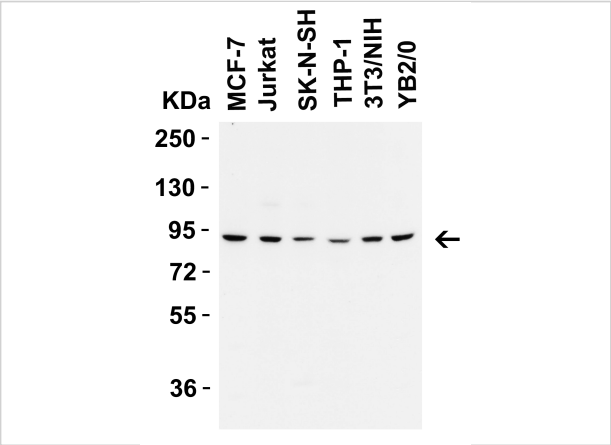
CATALOG NUMBER: 9551

Specifications

Host Species	Rabbit
Species Reactivity	Human, Mouse, Rat
Homology	Predicted species reactivity based on immunogen sequence: Chimpanzee(100%); Monkey (100%); Dog (100%)
Immunogen	Anti-FZD6 antibody (9551) was raised against a peptide corresponding to 14 amino acids in the central domain of human FZD6. The immunogen is located within 50-550 amino acids of FZD6.
Conjugate	Unconjugated
Tested Applications	ELISA, IF, WB
User Note	Optimal dilutions for each application to be determined by the researcher.
Predicted Molecular Weight	Predicted: 79kD Observed: 95 kD (Post-translational modification: 2 N-linked glycosylations)

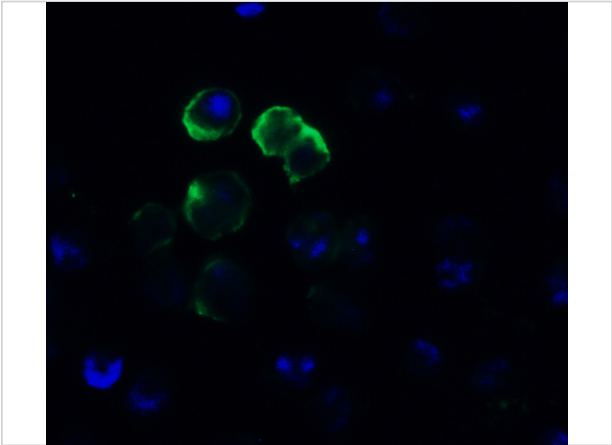
Properties

Purification	FZD6 Antibody is affinity chromatography purified via peptide column.
Clonality	Polyclonal
Isotype	IgG
Physical State	Liquid
Buffer	FZD6 Antibody is supplied in PBS containing 0.02% sodium azide.
Concentration	1 mg/mL
Storage Conditions	FZD6 antibody can be stored at 4°C for three months and -20°C, stable for up to one year. As with all antibodies care should be taken to avoid repeated freeze thaw cycles. Antibodies should not be exposed to prolonged high temperatures.



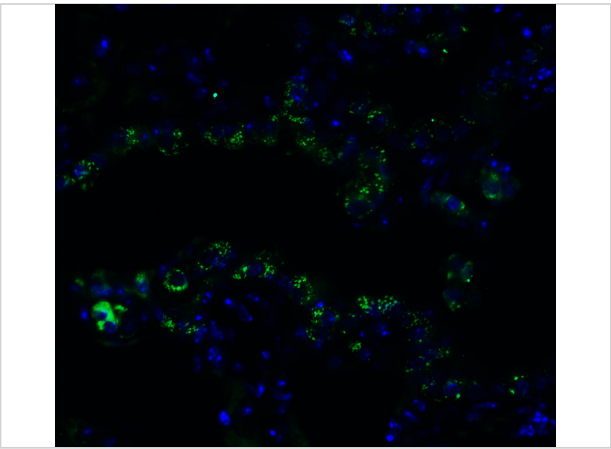
FZD6 (IN) Antibody 1

Figure 1 WB Validation in Human, Mouse and Rat Cell Lines
Loading: 15 µg of lysate. Antibodies: FZD6 9551, 2 µg/mL, 1 h incubation at RT in 5% NFDM/TBST. Secondary: Goat A...



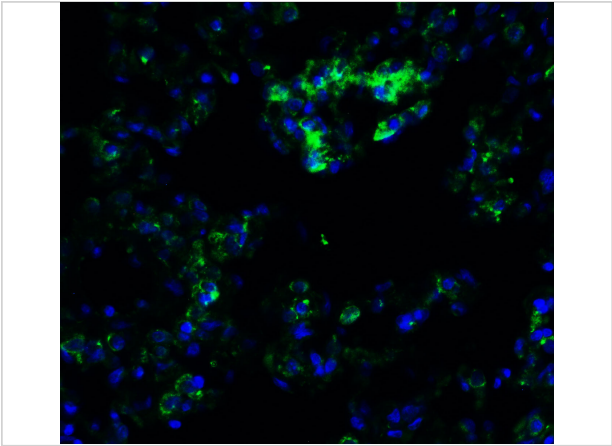
FZD6 (IN) Antibody 2

Figure 2 Immunofluorescence Validation of FZD6 in Daudi Cells
Immunofluorescent analysis of 4% paraformaldehyde-fixed Daudi cells labeling FZD6 with 9551 at 10 µg/mL, followed b...



FZD6 (IN) Antibody 3

Figure 3 Immunofluorescence Validation of FZD6 in Mouse Lung
Immunofluorescent analysis of 4% paraformaldehyde-fixed mouse lung labeling FZD6 with 9551 at 10 µg/mL, followed by ...



FZD6 (IN) Antibody 4

Figure 4 Immunofluorescence Validation of FZD6 in Rat Lung
Immunofluorescent analysis of 4% paraformaldehyde-fixed rat lung labeling FZD6 with 9551 at 10 µg/mL, followed by goat...

Disclaimer

Disclaimer	Optimal dilutions/concentrations should be determined by the end user. The information provided is a guideline for product use. This product is for research use only.
------------	--

For research use only. For additional information, visit ProSci's [Terms and Conditions Page](#).