



ProSci Incorporated
12170 Flint Place
Poway, CA 92064, USA
prosci-inc.com

P: +1 (888) 513-9525
Local: +1 (858) 513-2638
Fax: +1 (858) 513-2692

customercare@prosci-inc.com
techsupport@prosci-inc.com

SARS-CoV-2 (COVID-19) Envelope Antibody

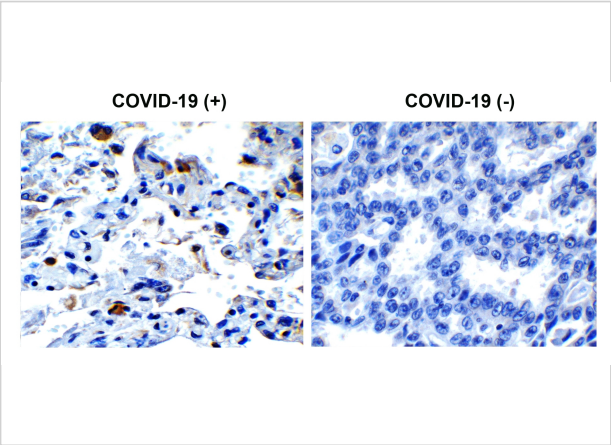
CATALOG NUMBER: 9169

Specifications

Host Species	Rabbit
Species Reactivity	Virus
Homology	Predicted reactivity based on immunogen sequence: SARS-CoV Envelope proteins: (93%)
Immunogen	Anti-SARS-CoV-2 (COVID-19) Envelope antibody (9169) was raised against a peptide corresponding to 14 amino acids near the carboxyl terminus of SARS-CoV-2 (COVID-19) Envelope protein. The immunogen is located within the last 50 amino acids of SARS-CoV-2 (COVID-19) Envelope protein.
Conjugate	Unconjugated
Tested Applications	ELISA, IHC, WB
User Note	Optimal dilutions for each application to be determined by the researcher.

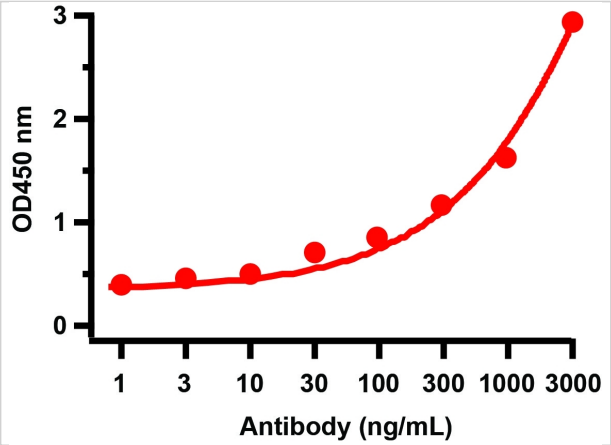
Properties

Purification	SARS-CoV-2 (COVID-19) Envelope Antibody is affinity chromatography purified via peptide column.
Clonality	Polyclonal
Isotype	IgG
Physical State	Liquid
Buffer	SARS-CoV-2 (COVID-19) Envelope Antibody is supplied in PBS containing 0.02% sodium azide.
Concentration	1 mg/mL
Storage Conditions	SARS-CoV-2 (COVID-19) Envelope antibody can be stored at 4°C up to one year. Antibodies should not be exposed to prolonged high temperatures.



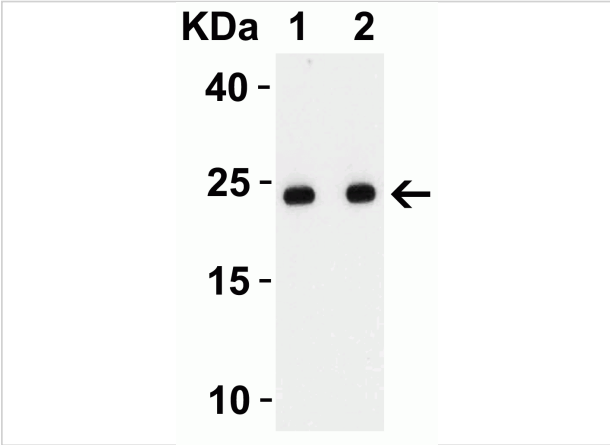
SARS-CoV-2 (COVID-19) Envelope Antibody 1

Figure 1 Immunohistochemistry Validation of SARS-CoV-2 (COVID-19) Envelope in COVID-19 Patient Lung
Immunohistochemical analysis of paraffin-embedded COVID-19 patient lung tiss...



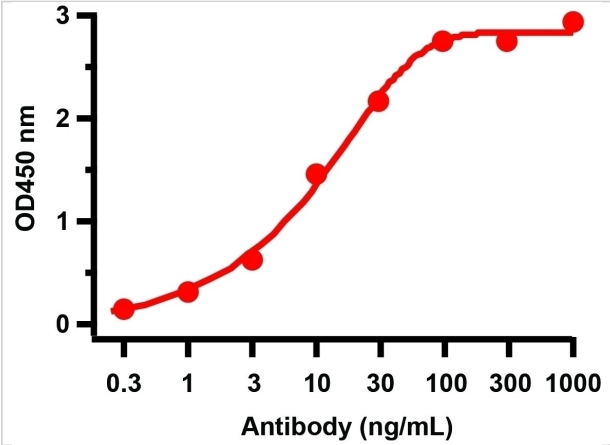
SARS-CoV-2 (COVID-19) Envelope Antibody 3

Figure 3 ELISA Validation with SARS-CoV-2 Envelope Recombinant Protein
Antibodies: SARS-CoV-2 (COVID-19) Envelope Antibody, 9169. A direct ELISA was performed using SARS-CoV...



SARS-CoV-2 (COVID-19) Envelope Antibody 2

Figure 2 Western Blot Validation with SARS-CoV-2 Envelope Recombinant Protein
Loading: 50 ng per lane of SARS-CoV-2 Envelope recombinant protein (92-730).Antibodies: SARS-CoV-2 ...



SARS-CoV-2 (COVID-19) Envelope Antibody 4

Figure 4 ELISA Validation
Antibodies: SARS-CoV-2 (COVID-19) Envelope Antibody, 9169. A direct ELISA was performed using immunogen peptide (3531P) as coating antigen and the a...

Disclaimer

Disclaimer	Optimal dilutions/concentrations should be determined by the end user. The information provided is a guideline for product use. This product is for research use only.
-------------------	--

For research use only. For additional information, visit ProSci's [Terms and Conditions Page](#).