

SARS-CoV-2 (COVID-19) 3CL-PRO (NSP5) Antibody

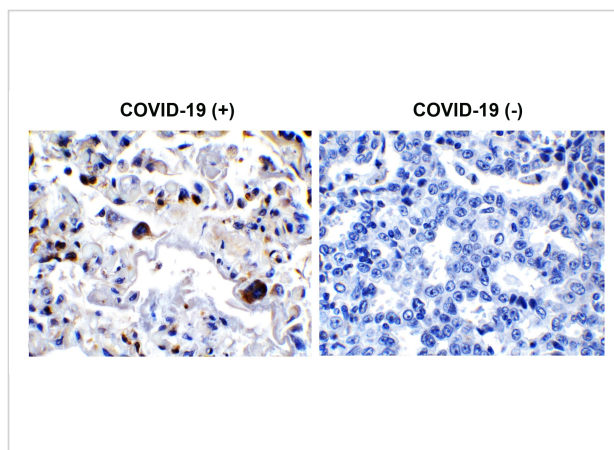
CATALOG NUMBER: 9153

Specifications

Host Species	Rabbit
Species Reactivity	Virus
Homology	Predicted reactivity based on immunogen sequence: SARS-CoV 3CL-PRO (NSP5) protein: (100%)
Immunogen	Anti-SARS-CoV-2 (COVID-19) 3CL-PRO (NSP5) antibody (9153) was raised against a peptide corresponding to 16 amino acids near the amino terminus of SARS-CoV-2 (COVID-19) 3CL-Pro (NSP5) protein. The immunogen is located within the first 50 amino acids of the SARS-CoV-2 (COVID-19) 3CL-Pro (NSP5) protein.
Conjugate	Unconjugated
Tested Applications	ELISA, IHC, WB
User Note	Optimal dilutions for each application to be determined by the researcher.

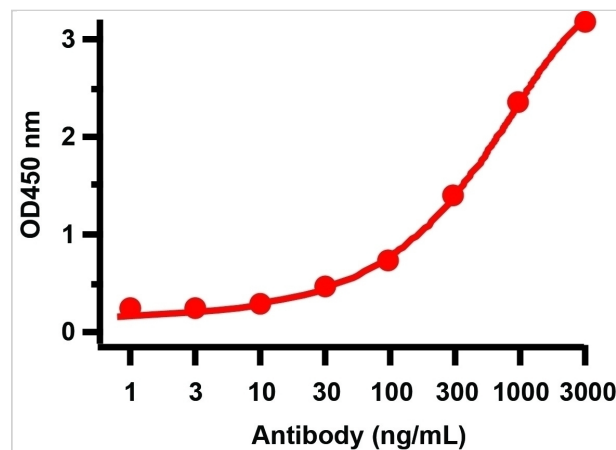
Properties

Purification	SARS-CoV-2 (COVID-19) 3CL-PRO (NSP5) Antibody is affinity chromatography purified via peptide column.
Clonality	Polyclonal
Isotype	IgG
Physical State	Liquid
Buffer	SARS-CoV-2 (COVID-19) 3CL-PRO (NSP5) Antibody is supplied in PBS containing 0.02% sodium azide.
Concentration	1 mg/mL
Storage Conditions	SARS-CoV-2 (COVID-19) 3CL-PRO (NSP5) antibody can be stored at 4 ° C for three months and -20 ° C, stable for up to one year. As with all antibodies care should be taken to avoid repeated freeze thaw cycles. Antibodies should not be exposed to prolonged high temperatures.



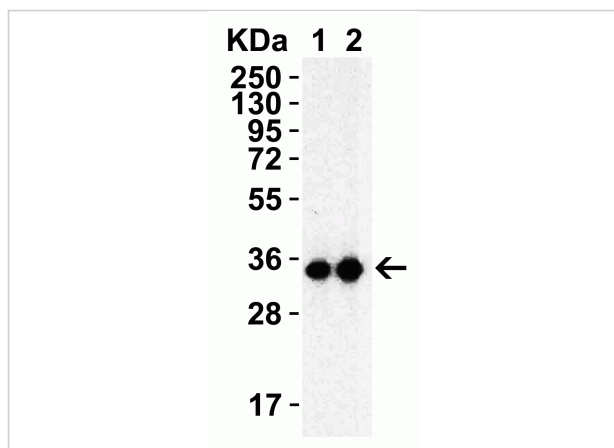
SARS-CoV-2 (COVID-19) 3CL-PRO (NSP5) Antibody 1

Figure 1 Immunohistochemistry Validation of SARS-CoV-2 (COVID-19) 3L-PRO in COVID-19 Patient Lung
Immunohistochemical analysis of paraffin-embedded COVID-19 patient lung tissue...



SARS-CoV-2 (COVID-19) 3CL-PRO (NSP5) Antibody 2

Figure 2 ELISA Validation with SARS-CoV-2 (COVID-19) 3CL-PRO (NSP5) Protein
Antibodies: SARS-CoV-2 (COVID-19) 3CL-PRO (NSP5) Antibody, 9153. A direct ELISA was performed usin...



SARS-CoV-2 (COVID-19) 3CL-PRO (NSP5) Antibody 3

Figure 3 Western Blot Validation with SARS-CoV-2 (COVID-19) 3CL-PRO (NSP5) Protein
Loading: 30 ng per lane of SARS-CoV-2 (COVID-19) 3CL-PRO (NSP5) recombinant protein (10-400).A...

Disclaimer

Disclaimer

Optimal dilutions/concentrations should be determined by the end user. The information provided is a guideline for product use. This product is for research use only.

For research use only. For additional information, visit ProSci's [Terms and Conditions Page](#).