

CD80 Antibody

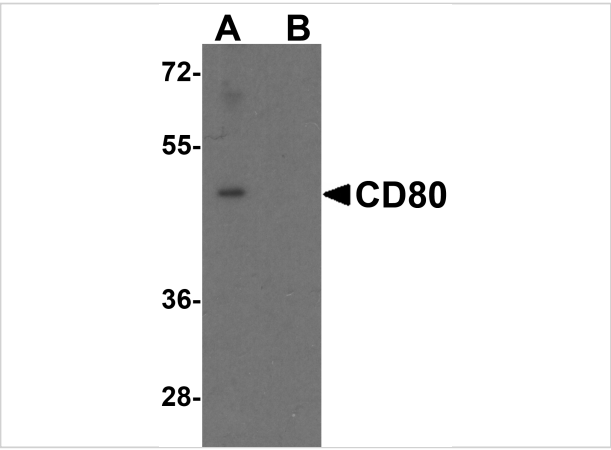
CATALOG NUMBER: 8679

Specifications

Host Species	Rabbit
Species Reactivity	Human, Mouse
Homology	Predicted species reactivity based on immunogen sequence: Rabbit: (71%)
Immunogen	CD80 antibody was raised against a peptide corresponding to 17 amino acids near the amino terminus of human CD80. The immunogen is located within amino acids 60 - 110 of CD80.
Conjugate	Unconjugated
Tested Applications	ELISA, IF, IHC-P, WB
User Note	Optimal dilutions for each application to be determined by the researcher.
Predicted Molecular Weight	Predicted: 32 kDa Observed: 50 kDa

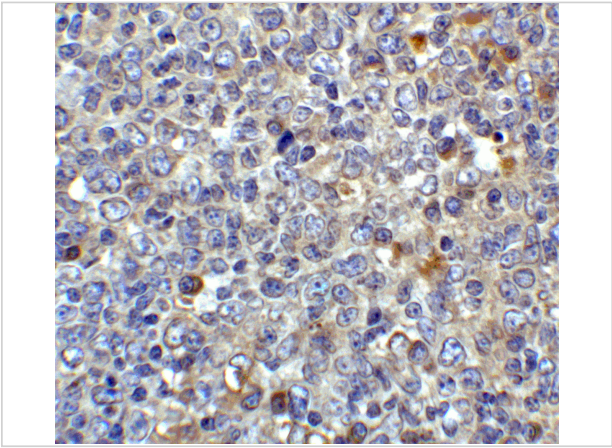
Properties

Purification	CD80 Antibody is affinity chromatography purified via peptide column.
Clonality	Polyclonal
Isotype	IgG
Physical State	Liquid
Buffer	CD80 Antibody is supplied in PBS containing 0.02% sodium azide.
Concentration	1 mg/mL
Storage Conditions	CD80 antibody can be stored at 4°C for three months and -20°C, stable for up to one year. As with all antibodies care should be taken to avoid repeated freeze thaw cycles. Antibodies should not be exposed to prolonged high temperatures.



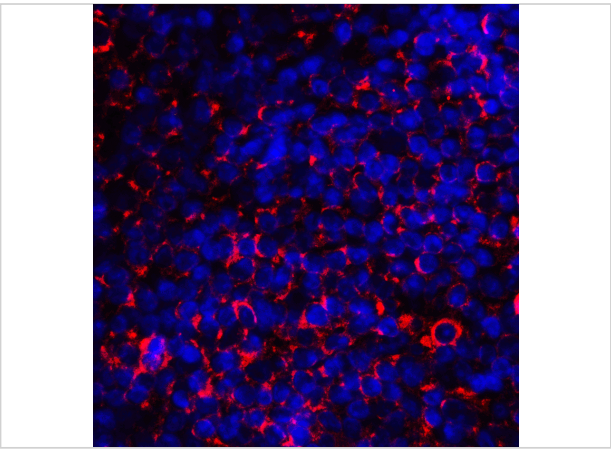
CD80 Antibody 1

Western blot analysis of CD80 in EL4 cell lysate with CD80 antibody at 1 µg/mL in (A) the absence and (B) the presence of blocking peptide.



CD80 Antibody 2

Immunohistochemistry of CD80 in human tonsil tissue with CD80 antibody at 2 µg/mL.



CD80 Antibody 3

Immunofluorescence of CD80 in human tonsil tissue with CD80 antibody at 20 µg/mL.

Red: CD80 Antibody (8679)
Blue: DAPI staining

Disclaimer

Disclaimer	Optimal dilutions/concentrations should be determined by the end user. The information provided is a guideline for product use. This product is for research use only.
------------	--

For research use only. For additional information, visit ProSci's [Terms and Conditions Page](#).