

## Caspase-9 Antibody

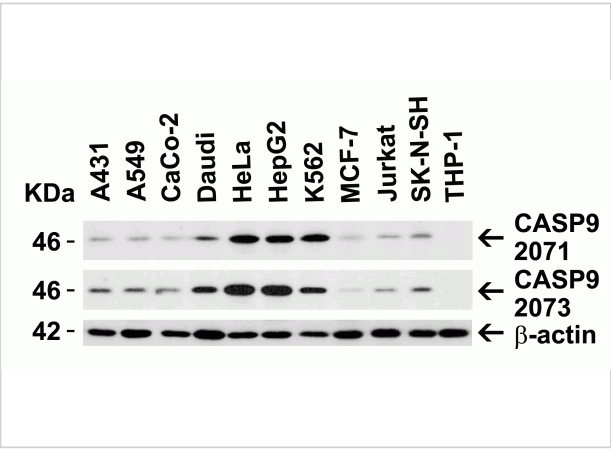
CATALOG NUMBER: 2071

### Specifications

Host Species	Rabbit
Species Reactivity	Human, Mouse, Rat
Immunogen	Anti- Caspase 9 antibody ( <b>2071</b> ) was raised against a peptide corresponding to 16 amino acids near the amino terminus of human Caspase 9. The immunogen is located within amino acids 30-80 of Caspase 9.
Conjugate	Unconjugated
Tested Applications	ELISA, WB
User Note	Optimal dilutions for each application to be determined by the researcher.
Specificity	It has no cross response to other members in caspase family.
Predicted Molecular Weight	Predicted: 46kD Observed: 46kD

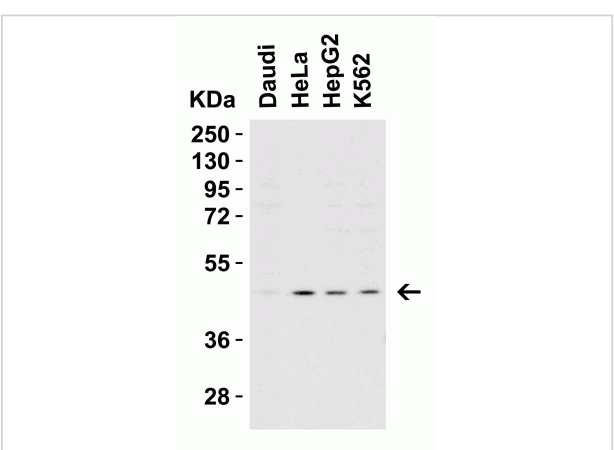
### Properties

Purification	Caspase-9 Antibody is affinity chromatography purified via peptide column.
Clonality	Polyclonal
Isotype	IgG
Physical State	Liquid
Buffer	Caspase-9 Antibody is supplied in PBS containing 0.02% sodium azide.
Concentration	1 mg/ml
Storage Conditions	Caspase-9 antibody can be stored at 4°C for three months and -20°C, stable for up to one year. As with all antibodies care should be taken to avoid repeated freeze thaw cycles. Antibodies should not be exposed to prolonged high temperatures.



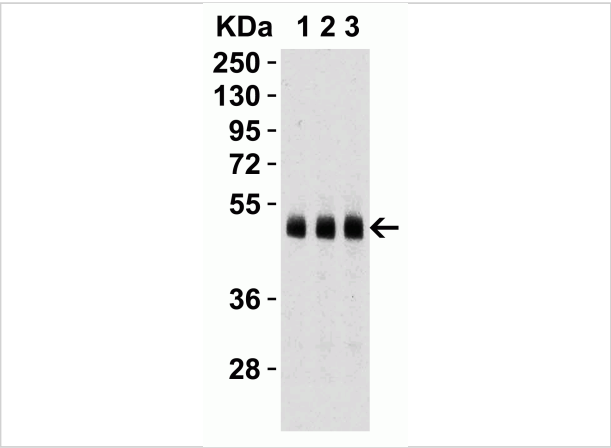
### Caspase-9 Antibody 1

**Figure 1 Independent Antibody Validation (IAV) via Protein Expression Profile in Human Cell Lines**  
 Loading: 15 µg of lysates per lane. Antibodies: Caspase 9, 2071 (1 µg/mL), Caspa...



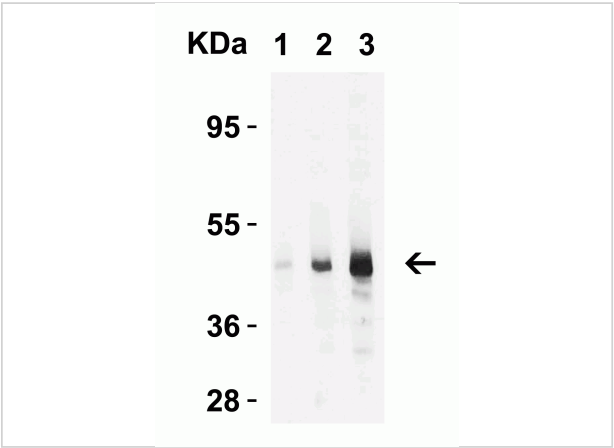
### Caspase-9 Antibody 2

**Figure 2 Western Blot Validation in Human Cell Lines**  
 Loading: 15 µg of lysates per lane. Antibodies: Caspase 9, 2071 (1 µg/mL), 1h incubation at RT in 5% NFDm/TBST. Secondary:...



### Caspase-9 Antibody 3

**Figure 3 Western Blot Validation in Human Heart**  
 Loading: 15 µg of lysates per lane. Antibodies: Caspase 9, 2071, 1h incubation at RT in 5% NFDm/TBST. Secondary: Goat anti-rabbi...



### Caspase-9 Antibody 4

**Figure 4 Western Blot Validation in HeLa Cell Lysate**  
 Loading: 15 µg of lysates per lane. Antibodies: Caspase 9, 2071 (Lane 1: 0.5 µg/mL; Lane 2: 1 µg/mL and Lane 3: 2 µg/mL), 1h...

## Disclaimer

Disclaimer	Optimal dilutions/concentrations should be determined by the end user. The information provided is a guideline for product use. This product is for research use only.
------------	--

For research use only. For additional information, visit ProSci's [Terms and Conditions Page](#).