

## DIS3L2 Antibody

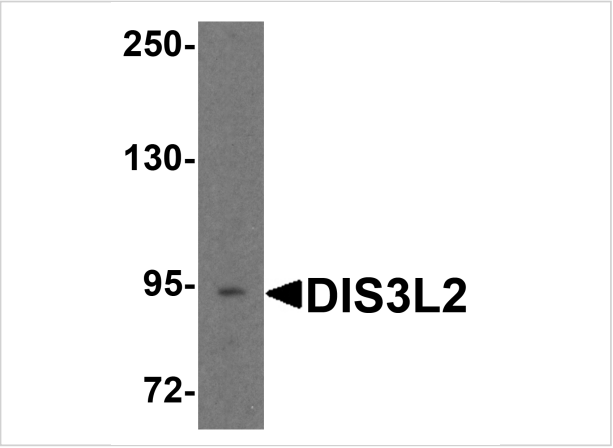
CATALOG NUMBER: 8347

### Specifications

<b>Host Species</b>	Rabbit
<b>Species Reactivity</b>	Human, Mouse, Rat
<b>Immunogen</b>	DIS3L2 antibody was raised against a 17 amino acid peptide near the carboxy terminus of human DIS3L2. The immunogen is located within amino acids 720 - 770 of DIS3L2.
<b>Conjugate</b>	Unconjugated
<b>Tested Applications</b>	ELISA, WB
<b>User Note</b>	Optimal dilutions for each application to be determined by the researcher.
<b>Specificity</b>	DIS3L2 antibody is human, mouse and rat reactive. At least three isoforms of DIS3L2 are known to exist; this antibody will only detect the longest isoform. DIS3L2 is predicted to not cross-react with DIS3 or DIS3L.
<b>Predicted Molecular Weight</b>	Predicted: 97 kDa Observed: 94 kDa

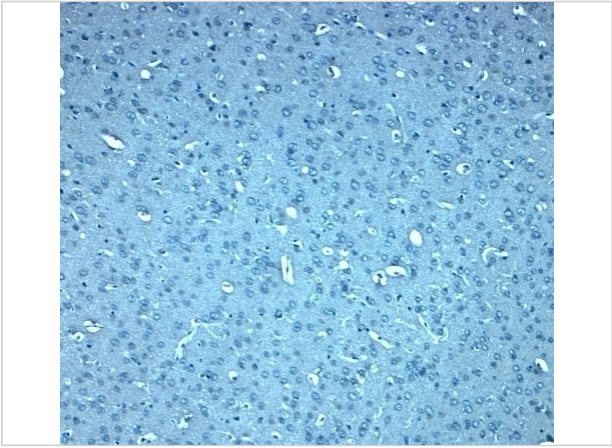
### Properties

<b>Purification</b>	DIS3L2 antibody is affinity chromatography purified via peptide column.
<b>Clonality</b>	Polyclonal
<b>Isotype</b>	IgG
<b>Physical State</b>	Liquid
<b>Buffer</b>	DIS3L2 antibody is supplied in PBS containing 0.02% sodium azide.
<b>Concentration</b>	1 mg/mL
<b>Storage Conditions</b>	DIS3L2 antibody can be stored at 4°C for three months and -20°C, stable for up to one year.



DIS3L2 Antibody 1

Western blot analysis of DIS3L2 in 3T3 cell lysate with DIS3L2 antibody at 1 µg/ml.



DIS3L2 Antibody 2

Immunohistochemistry of DIS3L2 in rat brain tissue with DIS3L2 antibody at 5 µg/mL.

Disclaimer

Disclaimer	Optimal dilutions/concentrations should be determined by the end user. The information provided is a guideline for product use. This product is for research use only.
------------	--

For research use only. For additional information, visit ProSci's [Terms and Conditions Page](#).