

RNF121 Antibody

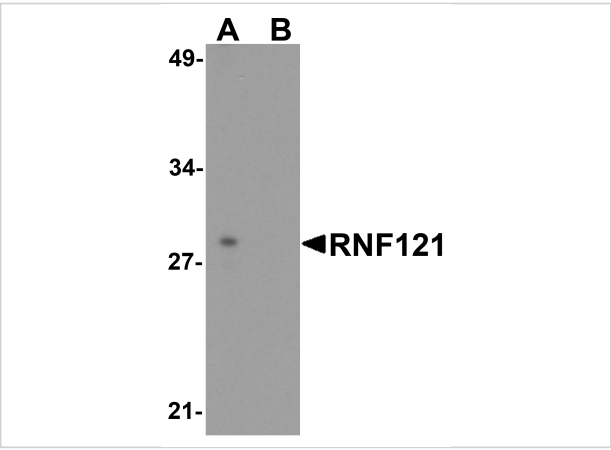
CATALOG NUMBER: 8285

Specifications

| | |
|----------------------------|---|
| Host Species | Rabbit |
| Species Reactivity | Human, Mouse, Rat |
| Immunogen | RNF121 antibody was raised against a 19 amino acid peptide near the carboxy terminus of human RNF121. The immunogen is located within amino acids 260 - 310 of RNF121. |
| Conjugate | Unconjugated |
| Tested Applications | ELISA, ICC, WB |
| User Note | Optimal dilutions for each application to be determined by the researcher. |
| Specificity | RNF121 antibody is human, mouse and rat reactive. Multiple isoforms of RNF121 are known to exist. |
| Predicted Molecular Weight | Predicted: 24, 27, 36 kDa Observed: 28 kDa |

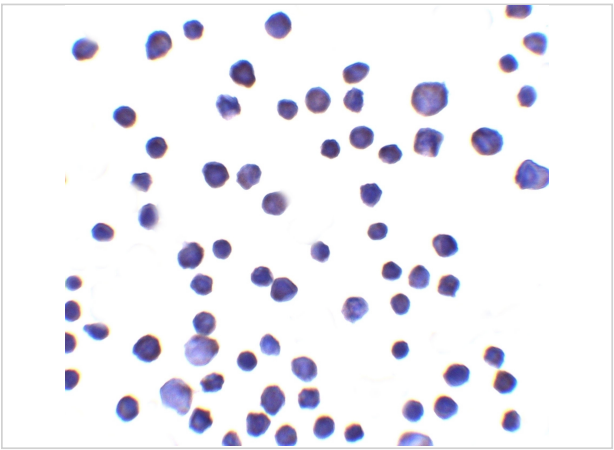
Properties

| | |
|--------------------|---|
| Purification | RNF121 antibody is affinity chromatography purified via peptide column. |
| Clonality | Polyclonal |
| Isotype | IgG |
| Physical State | Liquid |
| Buffer | RNF121 antibody is supplied in PBS containing 0.02% sodium azide. |
| Concentration | 1 mg/mL |
| Storage Conditions | RNF121 antibody can be stored at 4°C for three months and -20°C, stable for up to one year. |



RNF121 Antibody 1

Western blot analysis of RNF121 in MCF7 cell lysate with RNF121 antibody at 1 µg/ml in (A) the absence and (B) the presence of blocking peptide.



RNF121 Antibody 2

Immunocytochemistry of RNF121 in MCF7 cells with RNF121 antibody at 10 µg/ml.

Disclaimer

| | |
|------------|--|
| Disclaimer | Optimal dilutions/concentrations should be determined by the end user. The information provided is a guideline for product use. This product is for research use only. |
|------------|--|

For research use only. For additional information, visit ProSci's [Terms and Conditions Page](#).