

C2CD3 Antibody

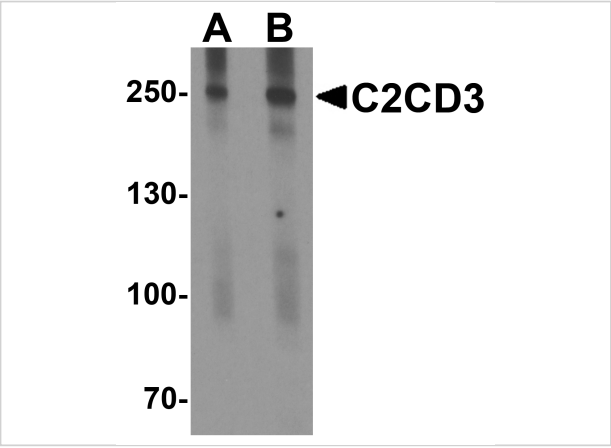
CATALOG NUMBER: 8169

Specifications

Host Species	Rabbit
Species Reactivity	Human, Mouse, Rat
Immunogen	C2CD3 antibody was raised against an 18 amino acid peptide near the center of human C2CD3. The immunogen is located within amino acids 1490 - 1540 of C2CD3.
Conjugate	Unconjugated
Tested Applications	ELISA, WB
User Note	Optimal dilutions for each application to be determined by the researcher.
Specificity	C2CD3 antibody is human, mouse and rat reactive.
Predicted Molecular Weight	Predicted: 216, 259 kDa Observed: 255 kDa

Properties

Purification	C2CD3 antibody is affinity chromatography purified via peptide column.
Clonality	Polyclonal
Isotype	IgG
Physical State	Liquid
Buffer	C2CD3 antibody is supplied in PBS containing 0.02% sodium azide.
Concentration	1 mg/mL
Storage Conditions	C2CD3 antibody can be stored at 4°C for three months and -20°C, stable for up to one year.



C2CD3 Antibody 1

Western blot analysis of C2CD3 in EL4 cell lysate with C2CD3 antibody at (A) 1 and (B) 2 µg/ml.

Disclaimer

Disclaimer	Optimal dilutions/concentrations should be determined by the end user. The information provided is a guideline for product use. This product is for research use only.
------------	--

For research use only. For additional information, visit ProSci's [Terms and Conditions Page](#).