

FLIP Antibody

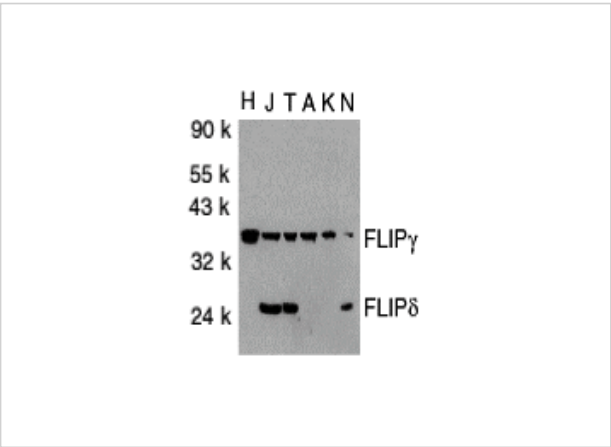
CATALOG NUMBER: 2055

Specifications

Host Species	Rabbit
Species Reactivity	Human
Immunogen	FLIP antibody was raised against a 19 amino acid peptide near the carboxy terminus of human FLIP. The immunogen is located within amino acids 180 - 230 of FLIP.
Conjugate	Unconjugated
Tested Applications	ELISA, ICC, IF, WB
User Note	Optimal dilutions for each application to be determined by the researcher.
Specificity	Antibody recognizes human and murine FLIPgamma and FLIPdelta but not FLIPalpha and FLIPbeta.
Predicted Molecular Weight	35 kDa and 25 kDa

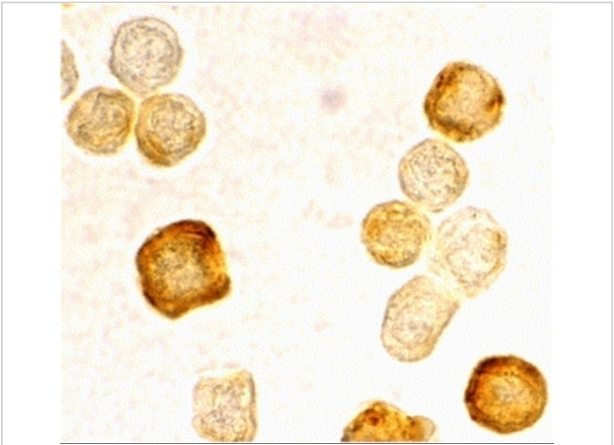
Properties

Purification	FLIP Antibody is affinity chromatography purified via peptide column.
Clonality	Polyclonal
Isotype	IgG
Physical State	Liquid
Buffer	FLIP Antibody is supplied in PBS containing 0.02% sodium azide.
Concentration	1 mg/ml
Storage Conditions	FLIP antibody can be stored at 4°C for three months and -20°C, stable for up to one year. As with all antibodies care should be taken to avoid repeated freeze thaw cycles. Antibodies should not be exposed to prolonged high temperatures.



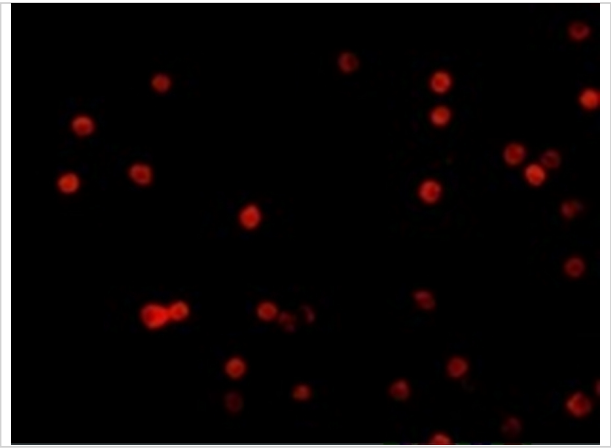
FLIP Antibody 1

Western blot analysis of FLIP in total cell lysates from HeLa (H), Jurkat (J), THP-1 (T), A431 (A), K562 (K) and NIH3T3 (N) cells with FLIP antibody at 1:1000 dilution.



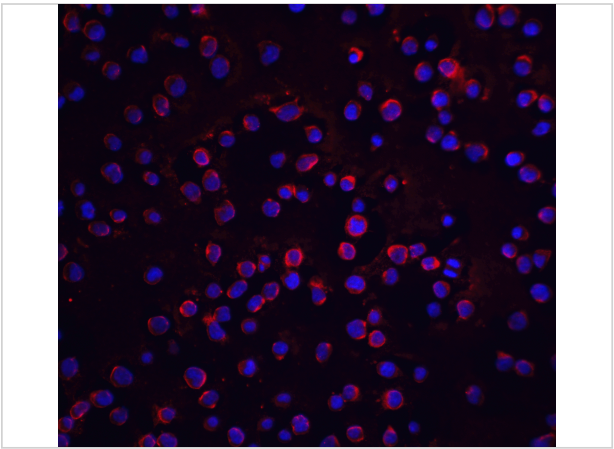
FLIP Antibody 2

Immunocytochemistry staining of HeLa cells using FLIP antibody at 2 µg/mL.



FLIP Antibody 3

Immunofluorescence of FLIP in HeLa cells with FLIP antibody at 10 µg/mL.



FLIP Antibody 4

Immunofluorescence of FLIP in Jurkat cells with FLIP antibody at 20 µg/mL.

Red: FLIP Antibody (2055)
Blue: DAPI staining

Disclaimer

Disclaimer	Optimal dilutions/concentrations should be determined by the end user. The information provided is a guideline for product use. This product is for research use only.
------------	--

For research use only. For additional information, visit ProSci's [Terms and Conditions Page](#).