

## SNRPN Antibody

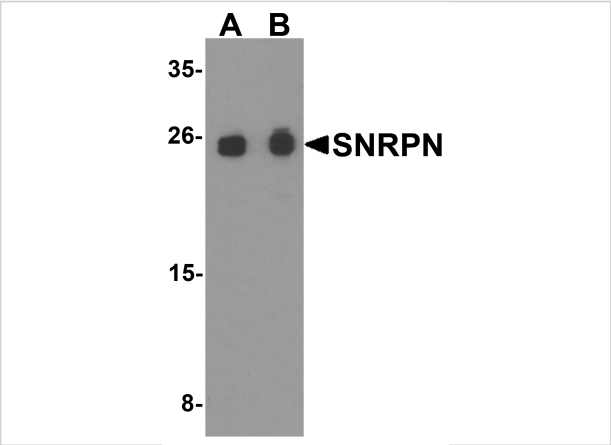
CATALOG NUMBER: 8155

### Specifications

Host Species	Rabbit
Species Reactivity	Human, Mouse, Rat
Homology	Predicted species reactivity based on immunogen sequence: Bovine: (100%), Chicken: (95%)
Immunogen	SNRPN antibody was raised against a 20 amino acid peptide near the amino terminus of human SNRPN. The immunogen is located within amino acids 30 - 80 of SNRPN.
Conjugate	Unconjugated
Tested Applications	ELISA, IF, IHC-P, WB
User Note	Optimal dilutions for each application to be determined by the researcher.
Specificity	SNRPN antibody is human, mouse and rat reactive.
Predicted Molecular Weight	Predicted: 26 kDa Observed: 25 kDa

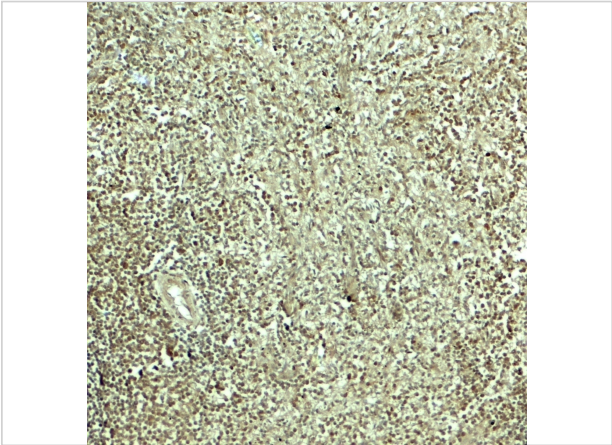
### Properties

Purification	SNRPN antibody is affinity chromatography purified via peptide column.
Clonality	Polyclonal
Isotype	IgG
Physical State	Liquid
Buffer	SNRPN antibody is supplied in PBS containing 0.02% sodium azide.
Concentration	1 mg/mL
Storage Conditions	SNRPN antibody can be stored at 4°C for three months and -20°C, stable for up to one year.



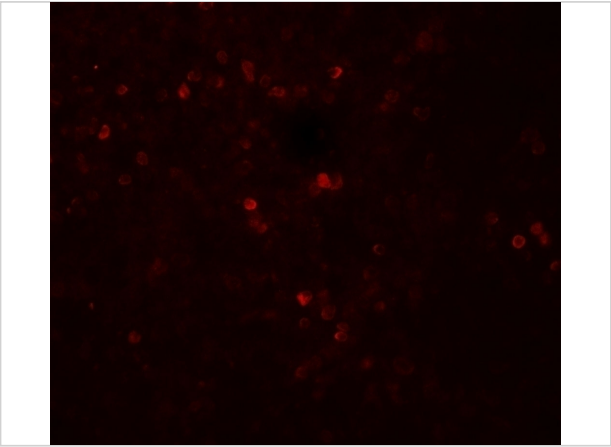
SNRPN Antibody 1

Western blot analysis of SNRPN in THP-1 cell lysate with SNRPN antibody at (A) 0.5 and (B) 1 µg/ml.



SNRPN Antibody 2

Immunohistochemistry of SNRPN in human spleen tissue with SNRPN antibody at 5 µg/mL.



SNRPN Antibody 3

Immunofluorescence of SNRPN in human spleen tissue with SNRPN antibody at 20 µg/mL.

Disclaimer

Disclaimer	Optimal dilutions/concentrations should be determined by the end user. The information provided is a guideline for product use. This product is for research use only.
------------	--

For research use only. For additional information, visit ProSci's [Terms and Conditions Page](#).