

RSPO3 Antibody

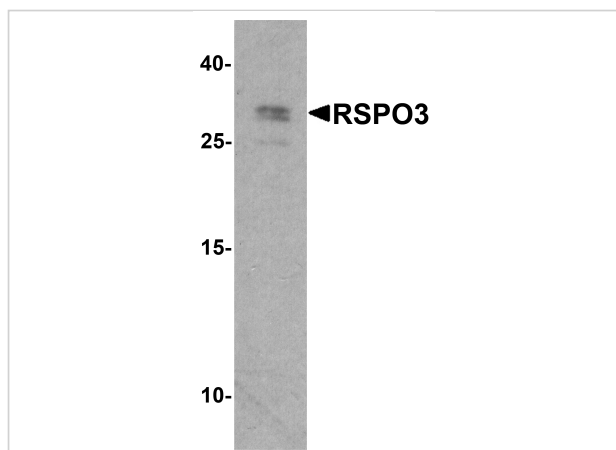
CATALOG NUMBER: 8153

Specifications

Host Species	Rabbit
Species Reactivity	Human, Mouse
Immunogen	RSPO3 antibody was raised against a 19 amino acid peptide near the carboxy terminus of human RSPO3. The immunogen is located within amino acids 200 - 250 of RSPO3.
Conjugate	Unconjugated
Tested Applications	ELISA, ICC, IF, WB
User Note	Optimal dilutions for each application to be determined by the researcher.
Specificity	RSPO3 antibody is human and mouse reactive. At least three isoforms of RSPO3 are known to exist; this antibody will detect all three.
Predicted Molecular Weight	Predicted: 30 kDa Observed: 30 kDa

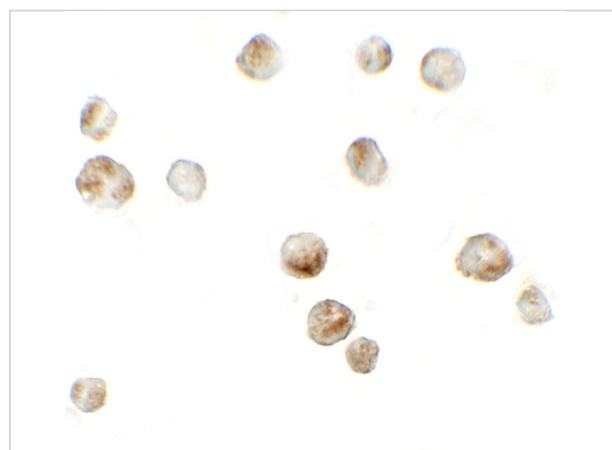
Properties

Purification	RSPO3 antibody is affinity chromatography purified via peptide column.
Clonality	Polyclonal
Isotype	IgG
Physical State	Liquid
Buffer	RSPO3 antibody is supplied in PBS containing 0.02% sodium azide.
Concentration	1 mg/mL
Storage Conditions	RSPO3 antibody can be stored at 4°C for three months and -20°C, stable for up to one year.



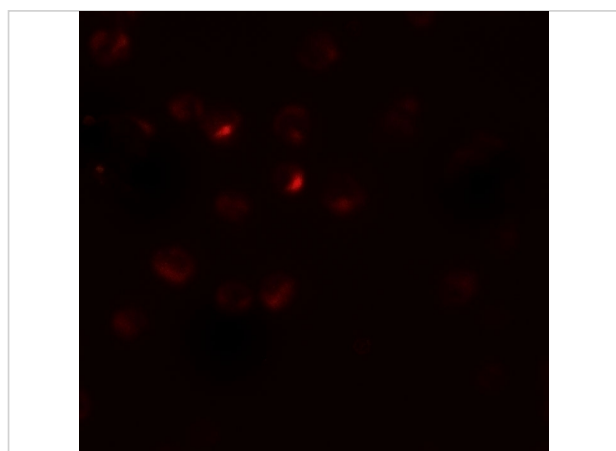
RSPO3 Antibody 1

Western blot analysis of RSPO3 in 293 cell lysate with RSPO3 antibody at 1 µg/ml.



RSPO3 Antibody 2

Immunocytochemistry of RSPO3 in 293 cells with RSPO3 antibody at 5 µg/mL.



RSPO3 Antibody 3

Immunofluorescence of RSPO3 in 293 cells with RSPO3 antibody at 20 µg/mL.

Disclaimer

Disclaimer

Optimal dilutions/concentrations should be determined by the end user. The information provided is a guideline for product use. This product is for research use only.

For research use only. For additional information, visit ProSci's [Terms and Conditions Page](#).